

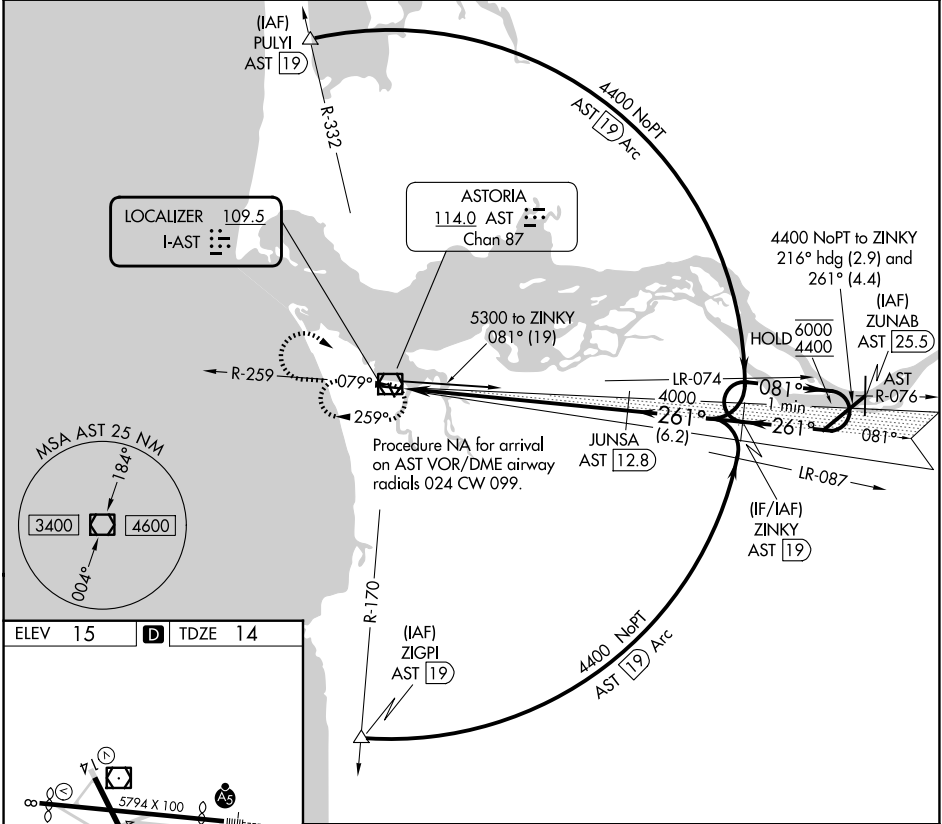
LOC I-AST 109.5	APP CRS 261°	Rwy Ldg 4780
		TDZE 14
		Apt Elev 15

ILS RWY 26

ASTORIA RGNL (AST)

DME required for procedure entry.		MALSRL	MISSED APPROACH: Climb to 1500 then climbing right turn to 2900 direct AST VOR/DME and hold.
▼	Rwy 26 helicopter visibility reduction below 3/4 SM NA. Inoperative table does not apply.	AS	

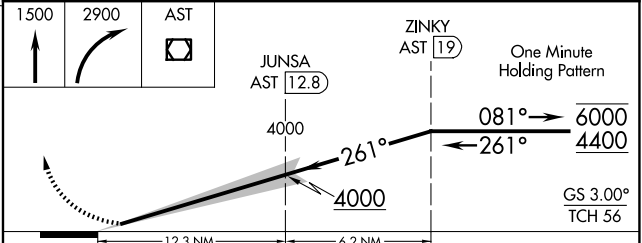
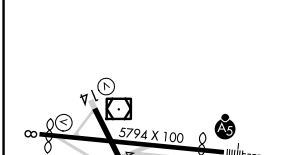
ASOS 135.375	SEATTLE CENTER 124.2 317.6	UNICOM 122.8 (CTAF) 0
------------------------	--------------------------------------	---------------------------------



NW-1, 11 JUN 2026 to 09 JUL 2026

NW-1, 11 JUN 2026 to 09 JUL 2026

ELEV 15	D	TDZE 14
---------	----------	---------



REIL Rwy 8	REIL Rwy 14	MIRL Rwy 8-26 and 14-32
------------	-------------	-------------------------

CATEGORY	A	B	C	D
S-ILS 26	264-1 250 (300-1)			