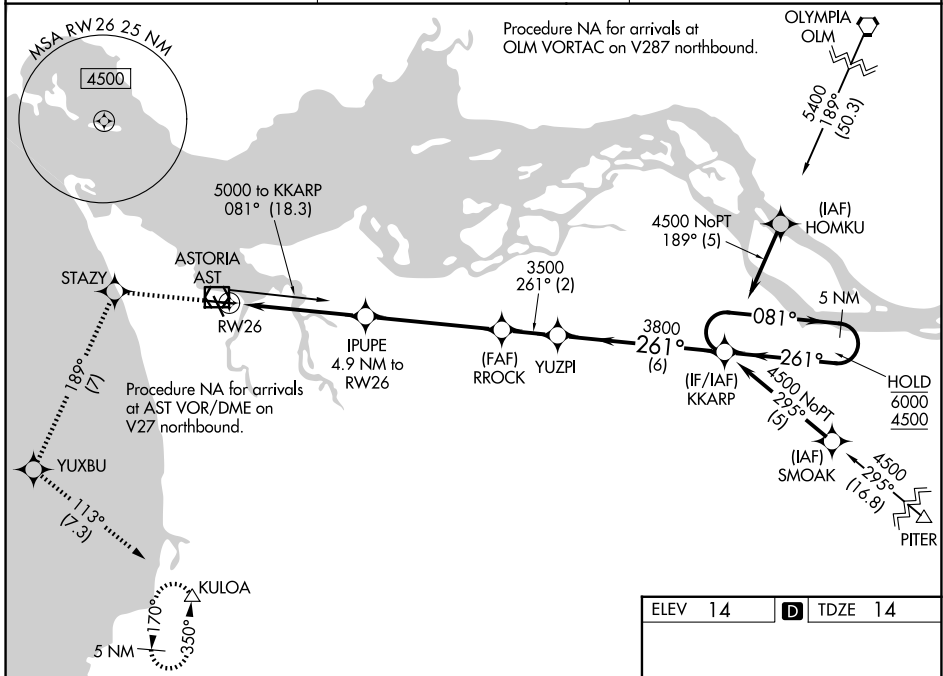


WAAS CH 97711 W26A	APP CRS 261°	Rwy Ldg TDZE 14 Apt Elev 14	4780
--	------------------------	---	-------------

RNAV (GPS) RWY 26

ASTORIA RGNL (AST)

RNP APCH.		MALSR	MISSED APPROACH: (Do not exceed 210K until STAZY) Climb to 5000 direct STAZY and left turn on track 189° to YUXBU and left turn on track 113° to KULOA and hold, continue climb-in-hold to 5000.
<p>⚠ Inop table does not apply to LPV all Cats. Rwy 26 helicopter visibility reduction below ¾ SM NA. For inop ALS, increase LNAV Cat A/B visibility to 1 SM and Cat C/D to 1 ½ SM.</p>			
ASOS 135.375	SEATTLE CENTER 124.2 317.6	UNICOM 122.8 (CTAF) 0	

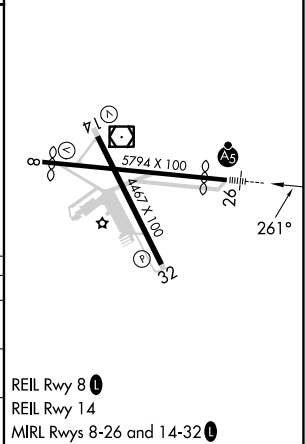


NW-1, 11 JUN 2026 to 09 JUL 2026

NW-1, 11 JUN 2026 to 09 JUL 2026

ELEV 14	D TDZE 14
---------	------------------

5000	STAZY	YUXBU	KULOA	KKARP	5 NM Holding Pattern
↑	✧	tr 189°	△	✧	✧
*LNAV only					
*2.3 NM to RW26		IPUPE 4.9 NM to RW26	RROCK 3500	YUZPI 3500	6000 / 4500
RW26		1780*		3800	GP 3.30° TCH 55
2.3 NM		2.6 NM	4.9 NM	2 NM	6 NM
CATEGORY	A	B	C	D	
LPV DA	264-¾		250 (300-¾)		
LNAV MDA	860-¾	846 (900-¾)	860-1⅞	846 (900-1⅞)	
CIRCLING	860-1¼	846 (900-1¼)	1080-3 1066 (1100-3)	1160-3 1146 (1200-3)	



REIL Rwy 8 0
REIL Rwy 14
MIRL Rwy 8-26 and 14-32 0