

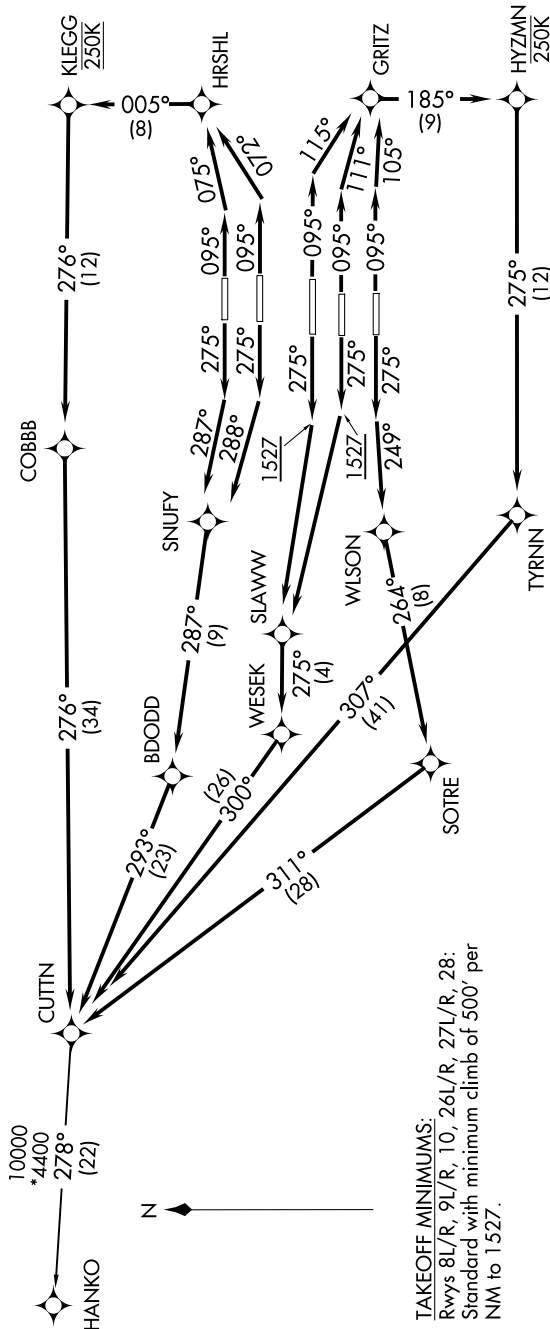
CUTTN TWO DEPARTURE(RNAV) AL-26 (FAA)

SE-4, 11 JUN 2026 to 09 JUL 2026

TOP ALTITUDE:  
10000

- NOTE: If unable to accept climb rate, advise Clearance Delivery on initial contact.
- NOTE: Use departure frequency depicted unless otherwise advised.
- NOTE: For Turboprop aircraft only.
- NOTE: DME/DME/IRU or GPS Required.
- NOTE: RNAV 1.
- NOTE: RADAR Required for non-GPS equipped aircraft.
- NOTE: Transponder code will be issued via PDC or Atlanta Clearance Delivery.
- NOTE: Accelerate to 250K, if unable, advise both tower and Departure Control on initial contact.
- NOTE: Aircraft at Midfield Ramps will advise Ramp Towers of departure SID prior to pushback.
- NOTE: Upon receipt of ATC clearance (from ATL Clearance Delivery), read back only your call sign and transponder code, unless you have a question.

D-ATIS 125.55  
CLNC DEL 118.1  
CPDIC  
GND CON  
121.9 254.4 (Rwys 8L-26R, 8R-26L)  
121.75 254.4 (Rwys 9L-27R, 9R-27L)  
121.65 254.4 (Rwy 10-28)  
ATLANTA TOWER  
119.1 254.4 (Rwy 8L-26R)  
125.325 254.4 (Rwy 8R-26L)  
119.3 254.4 (Rwy 9R-27L)  
123.85 254.4 (Rwy 9L-27R)  
119.5 254.4 (Rwy 10-28)  
ATLANTA DEP CON  
133.475 281.425 (Rwys 8L-26R, 8R-26L)  
125.65 281.425 (Rwys 9L-27R, 9R-27L)  
121.225 281.425 (Rwy 10-28)



TAKEOFF MINIMUMS:  
Rwys 8L/R, 9L/R, 10, 26L/R, 27L/R, 28:  
Standard with minimum climb of 500' per  
NM to 1527.

(CONTINUED ON FOLLOWING PAGE)

NOTE: Chart not to scale.

SE-4, 11 JUN 2026 to 09 JUL 2026



DEPARTURE ROUTE DESCRIPTION  
SEE ADDITIONAL REQUIREMENTS ON AAUP

TAKEOFF RWY 8L: Climb heading 095° to intercept course 075° to HRSHL, then on depicted route to CUTTN, maintain 250K to KLEGG, thence. . . .

TAKEOFF RWY 8R: Climb heading 095° to intercept course 072° to HRSHL, then on depicted route to CUTTN, maintain 250K to KLEGG, thence. . . .

TAKEOFF RWY 9L: Climb heading 095° to intercept course 115° to GRITZ, then on depicted route to CUTTN, maintain 250K to HYZMN, thence. . . .

TAKEOFF RWY 9R: Climb heading 095° to intercept course 111° to GRITZ, then on depicted route to CUTTN, maintain 250K to HYZMN, thence. . . .

TAKEOFF RWY 10: Climb heading 095° to intercept course 105° to GRITZ, then on depicted route to CUTTN, maintain 250K to HYZMN, thence. . . .

TAKEOFF RWY 26L: Climb heading 275° to intercept course 288° to SNUFY, then on depicted route to CUTTN, thence. . . .

TAKEOFF RWY 26R: Climb heading 275° to intercept course 287° to SNUFY, then on depicted route to CUTTN, thence. . . .

TAKEOFF RWYS 27L/R: Climb heading 275° to 1527, then direct SLAWW, then on depicted route to CUTTN, thence. . . .

TAKEOFF RWY 28: Climb heading 275° to intercept course 249° to WLSON, then on depicted route to CUTTN, thence. . . .

. . . .maintain 10000. Expect clearance to filed altitude ten minutes after departure.

HANKO TRANSITION (CUTTN2.HANKO)

SE-4, 11 JUN 2026 to 09 JUL 2026

SE-4, 11 JUN 2026 to 09 JUL 2026