

GLAVN TWO ARRIVAL (RNAV) Transition Routes

ATLANTA, GEORGIA

SE-4, 11 JUN 2026 to 09 JUL 2026

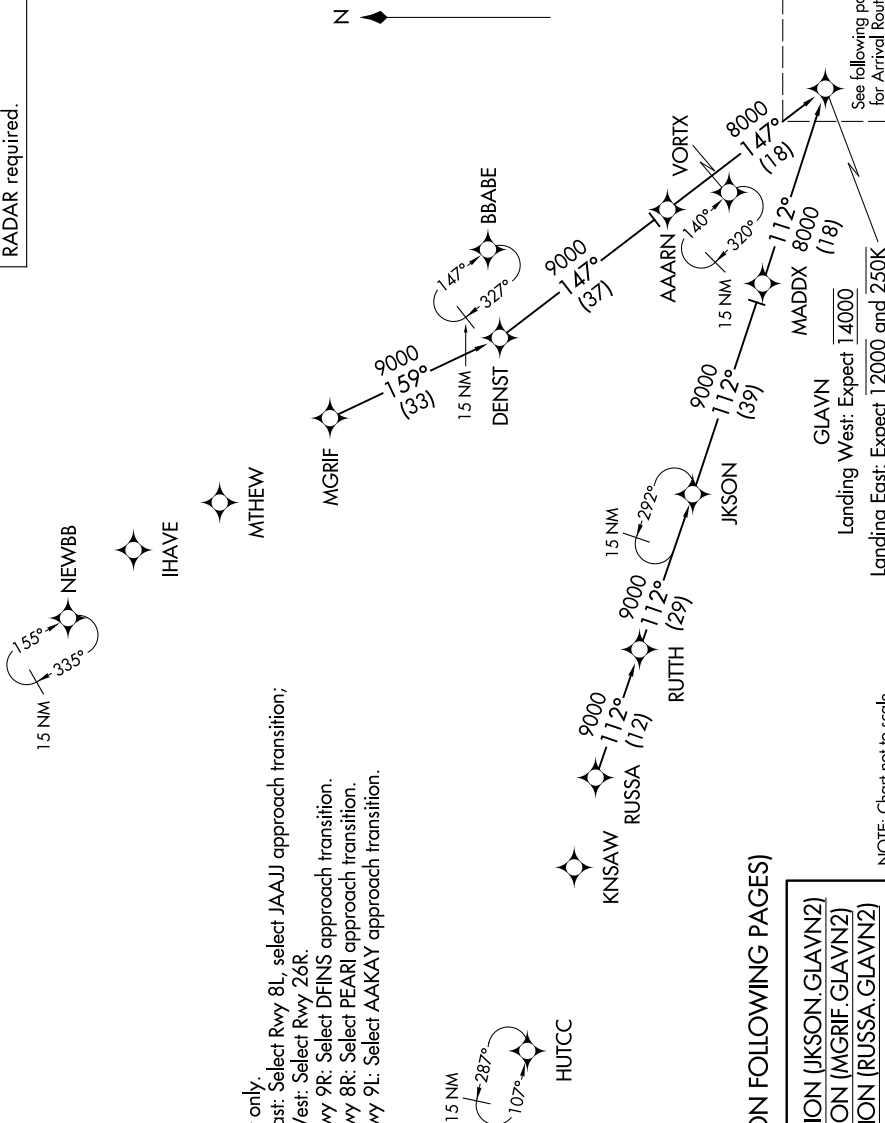
RNAV 1-DME/DME/IRU or GPS.
RADAR required.

ATLANTA APP CON
128.0 379.9
D-ATIS ARR
119.65

- NOTE: Jet aircraft only.
- NOTE: Landing East: Select Rwy 8L, select JAAJ approach transition; Landing West: Select Rwy 26R.
- NOTE: Landing Rwy 9R: Select DFINS approach transition.
- NOTE: Landing Rwy 8R: Select PEARL approach transition.
- NOTE: Landing Rwy 9L: Select AAKAY approach transition.

(CONTINUED ON FOLLOWING PAGES)

JKSON TRANSITION (JKSON.GLAVN2)
MGRIF TRANSITION (MGRIF.GLAVN2)
RUSSA TRANSITION (RUSSA.GLAVN2)



NOTE: Chart not to scale.

See following page for Arrival Routes.

ARRIVAL ROUTE DESCRIPTION

From GLAVN on track 144° to STHRN.

LANDING RUNWAY 8L: From STHRN on track 179° to cross YABBA at 9000, then on track 179° to cross NAVVY at or above 8000, then on track 165° to cross LARI at or above 5000, then on track 095° to cross JAAJ at or above 5000. Expect ILS Rwy 8L approach.

LANDING RUNWAY 8R: From STHRN on track 179° to cross YABBA at 9000, then on track 179° to cross NAVVY at or above 8000, then on track 165° to cross GPEAT at or above 5000, then on track 095° to cross PEARL at or above 5000. Expect ILS Rwy 8R approach.

LANDING RUNWAY 9L: From STHRN on track 179° to cross YABBA at 9000, then on track 179° to cross NAVVY at or above 8000, then on track 170° to cross RYENN at or above 7000, then on track 095° to cross AAKAY at or above 6000. Expect ILS Rwy 9L approach.

LANDING RUNWAY 9R: From STHRN on track 179° to cross YABBA at 9000, then on track 179° to cross NAVVY at or above 8000, then on track 170° to cross ANDIY at or above 7000, then on track 095° to cross DFINS at or above 6000. Expect ILS Rwy 9R approach.

LANDING RUNWAY 10: From STHRN on track 179° to cross YABBA at 9000, then on track 179° to cross NAVVY at or above 8000, then on track 180° to cross DROYD at 8000, then on track 180°. Expect RADAR vectors to final approach course.

LANDING RUNWAYS 26L/R: From STHRN on track 144° to HOGGG, then on track 095° to RAIIN, then on track 095° to KLOWD, then on track 095° to SWEPT, then on track 095° to KYMMY, then on track 095° to KEAVY, then on track 095°. Expect RADAR vectors to final approach course.

LANDING RUNWAYS 27L/R, 28: From STHRN on track 144° to HOGGG, then on track 154° to EAGYL, then on track 095° to SHURT, then on track 095° to FOGER, then on track 095° to HITTT, then on track 095° to YURII, then on track 095°. Expect RADAR vectors to final approach course.

LOST COMMUNICATIONS

LANDING WEST: ASSIGNED RUNWAY 26R OR RUNWAY NOT ASSIGNED: Cross GLAVN at 14000; cross RAIIN at 12000; cross SWEPT at or above 7000; cross KEAVY at 5000; after KEAVY turn right direct ZELOW and proceed on the ILS or RNAV Rwy 26R approach.

LANDING WEST: ASSIGNED RUNWAY 26L: Cross GLAVN at 14000; cross RAIIN at 12000; cross SWEPT at or above 7000; cross KEAVY at 5000; after KEAVY turn right direct JIRRI and proceed on the ILS or RNAV Rwy 26L approach.

LANDING WEST: ASSIGNED RUNWAY 27L: Cross GLAVN at 14000; cross EAGYL at 12000; cross FOGER at or above 7000; cross YURII at 4000; after YURII turn left direct SLVAA and proceed on the ILS or RNAV Rwy 27L approach.

LANDING WEST: ASSIGNED RUNWAY 27R: Cross GLAVN at 14000; cross EAGYL at 12000; cross FOGER at or above 7000; cross YURII at 4000; after YURII turn left direct YOUYU and proceed on the ILS or RNAV Rwy 27R approach.

LANDING WEST: ASSIGNED RUNWAY 28: Cross GLAVN at 14000; cross EAGYL at 12000; cross FOGER at or above 7000; cross YURII at 4000; after YURII turn left direct PRMAN and proceed on the ILS or RNAV Rwy 28 approach.

LANDING EAST: ASSIGNED RUNWAY 10: Cross GLAVN at 14000; cross YABBA at 9000; cross NAVVY at or above 8000; cross DROYD at 8000; after DROYD descend to 6000 and proceed direct DEWHY; proceed on the ILS or RNAV Rwy 10 approach.

SE-4, 11 JUN 2026 to 09 JUL 2026

SE-4, 11 JUN 2026 to 09 JUL 2026