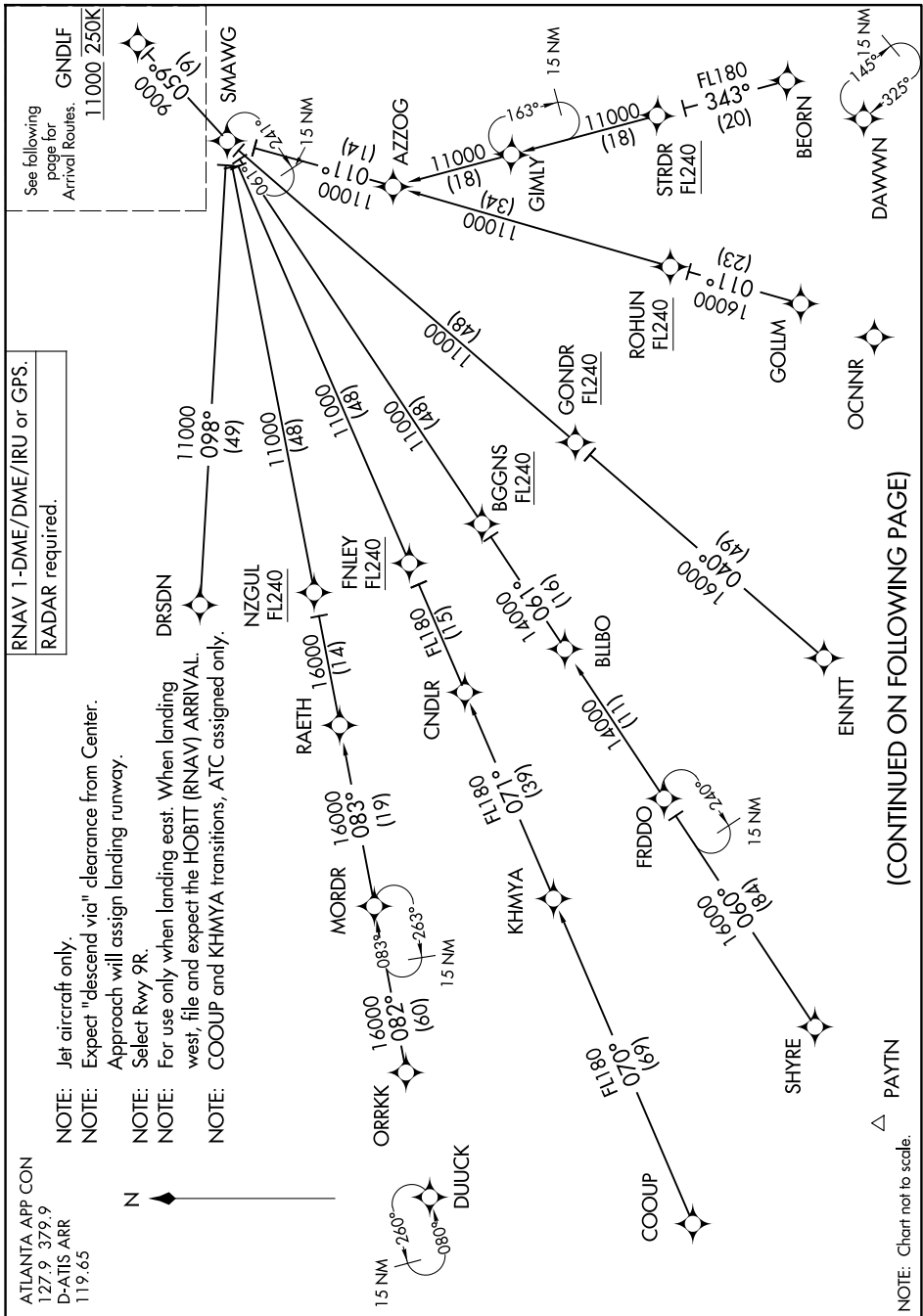


GNDLF THREE ARRIVAL (RNAV) Transition Routes

SE-4, 11 JUN 2026 to 09 JUL 2026



ATLANTA APP CON
127.9 379.9
D-ATIS ARR
119.65

- NOTE: Jet aircraft only.
- NOTE: Expect "descend via" clearance from Center.
- NOTE: Approach will assign landing runway.
- NOTE: Select Rwy 9R.
- NOTE: For use only when landing east. When landing west, file and expect the HOBITT (RNAV) ARRIVAL.
- NOTE: COOUP and KHMYA transitions, ATC assigned only.



△ PAYTN
NOTE: Chart not to scale.

(CONTINUED ON FOLLOWING PAGE)

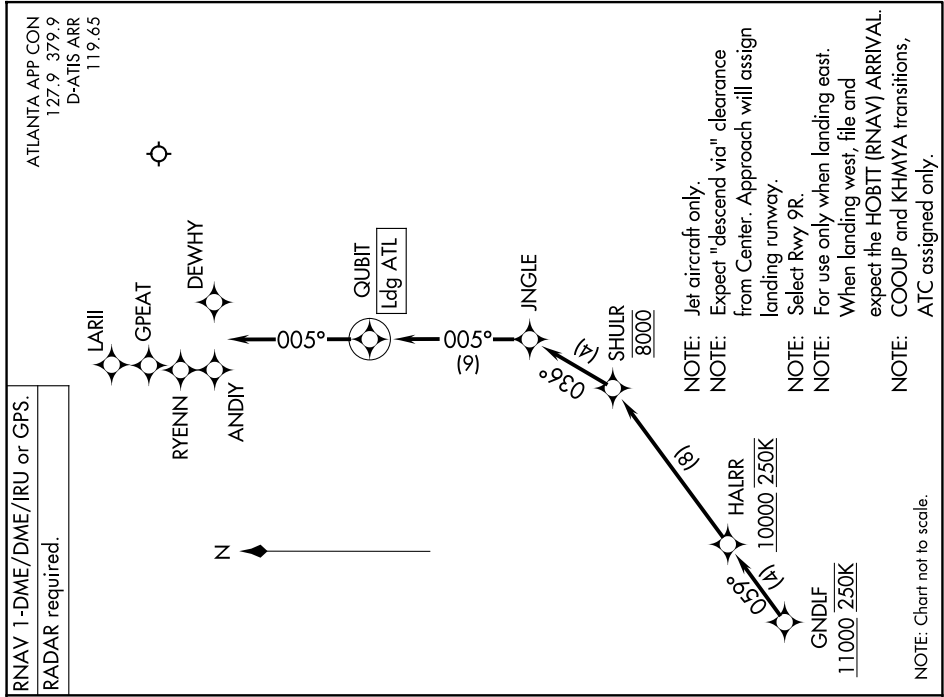
SE-4, 11 JUN 2026 to 09 JUL 2026

GNDLF THREE ARRIVAL (RNAV) Transition Routes

GNDLF THREE ARRIVAL (RNAV) Arrival Routes

ATLANTA, GEORGIA

SE-4, 11 JUN 2026 to 09 JUL 2026



RNAV 1-DME/DME/IRU or GPS. RADAR required.

ARRIVAL ROUTE DESCRIPTION

BEORN TRANSITION (BEORN.GNDLF3);
 COOUP TRANSITION (COOUP.GNDLF3);
 DRSDN TRANSITION (DRSDN.GNDLF3);
 ENNT TRANSITION (ENNT.GNDLF3);
 FRDDO TRANSITION (FRDDO.GNDLF3);
 GOILM TRANSITION (GOILM.GNDLF3);
 KHYVA TRANSITION (KHYVA.GNDLF3);
 ORKK TRANSITION (ORKK.GNDLF3);
 SHYRE TRANSITION (SHYRE.GNDLF3);
 STRDR TRANSITION (STRDR.GNDLF3);

From GNDLF on track 059° to cross HALRR at or above 10000 and at 250K, then on track 059° to cross SHULR at 8000, then on track 036° to JINGLE, then on track 005° to QUBIT, then on track 005°. Expect RADAR vectors to find approach course.

LOST COMMUNICATIONS:
ASSIGNED RUNWAY 10 or RUNWAY NOT ASSIGNED: Cross HALRR at or above 10000; cross SHULR at 8000; cross QUBIT at 8000; cross QUBIT at 5000; after QUBIT descend to 3000 and proceed direct DEWHY; proceed on the ILS or RNAV Rwy 10 approach.
ASSIGNED RUNWAY 9L: Cross HALRR at or above 10000; cross SHULR at 8000; cross QUBIT at 6000; after QUBIT proceed direct RYENN and proceed on the ILS or RNAV Rwy 9L approach.
ASSIGNED RUNWAY 9R: Cross HALRR at or above 10000; cross SHULR at 8000; cross QUBIT at 6000; after QUBIT proceed direct ANDIY and proceed on the ILS or RNAV Rwy 9R approach.
ASSIGNED RUNWAY 8L: Cross HALRR at or above 10000; cross SHULR at 8000; cross QUBIT at 6000; after QUBIT proceed direct LARLI and proceed on the ILS or RNAV Rwy 8L approach.
ASSIGNED RUNWAY 8R: Cross HALRR at or above 10000; cross SHULR at 8000; cross QUBIT at 6000; after QUBIT proceed direct GPEAT and proceed on the ILS or RNAV Rwy 8R approach.

SE-4, 11 JUN 2026 to 09 JUL 2026