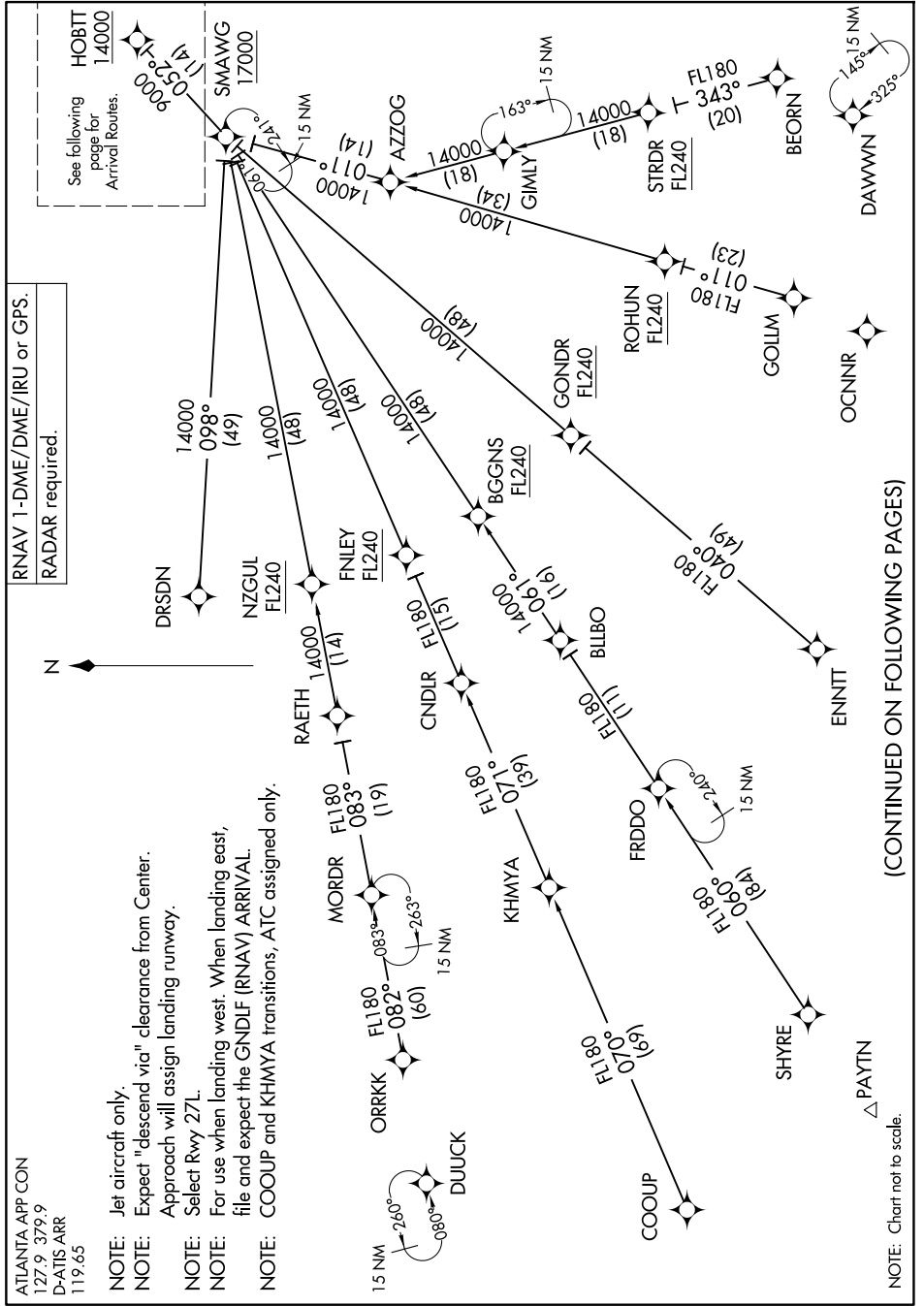


HOBT THREE ARRIVAL (RNAV) Transition Routes

SE-4, 11 JUN 2026 to 09 JUL 2026



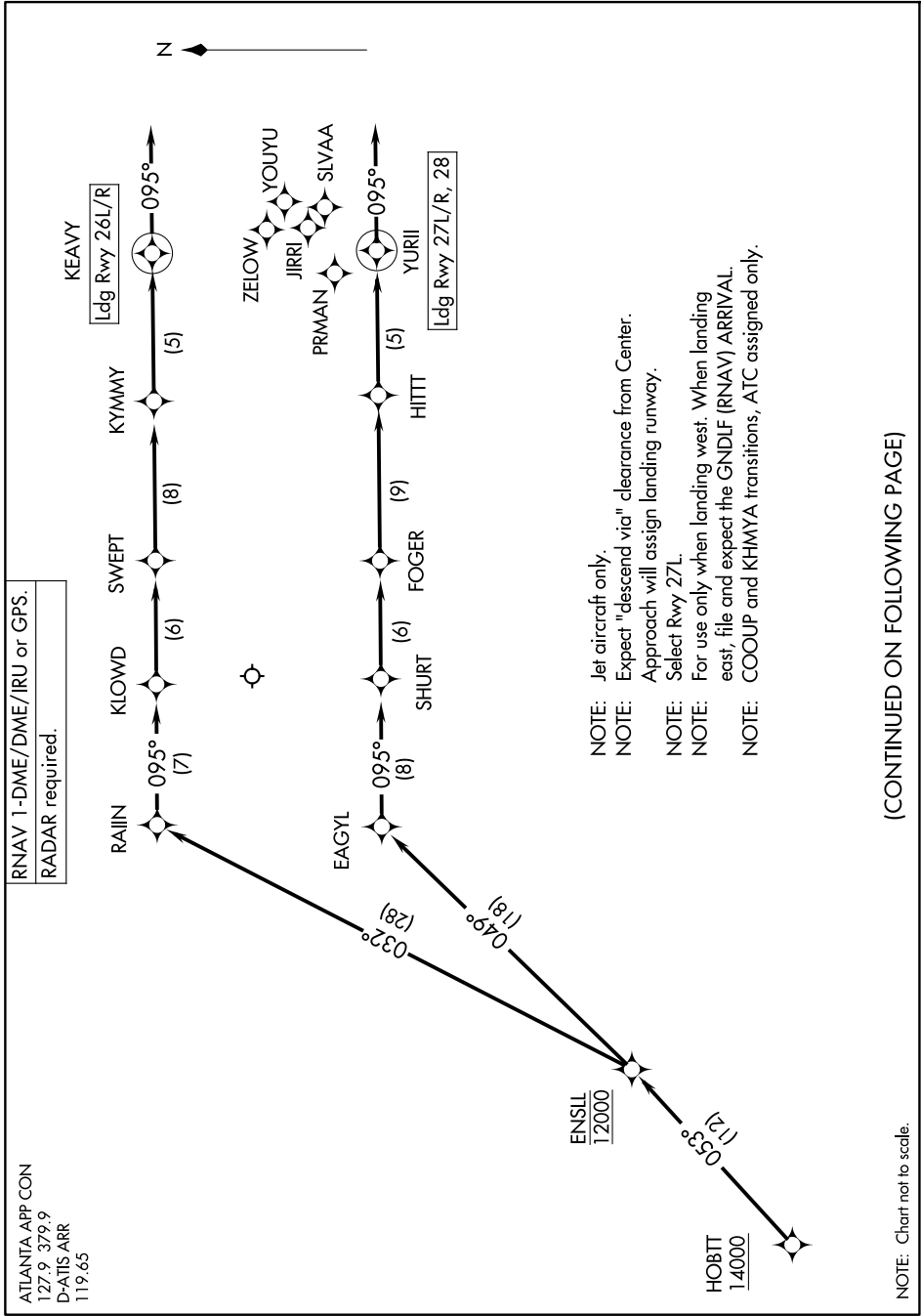
(CONTINUED ON FOLLOWING PAGES)

SE-4, 11 JUN 2026 to 09 JUL 2026

HOBT THREE ARRIVAL (RNAV) Transition Routes

# HOBT THREE ARRIVAL (RNAV) Arrival Routes

SE-4, 11 JUN 2026 to 09 JUL 2026



(CONTINUED ON FOLLOWING PAGE)

SE-4, 11 JUN 2026 to 09 JUL 2026

# HOBT THREE ARRIVAL (RNAV) Arrival Routes

NOTE: Chart not to scale.

ARRIVAL ROUTE DESCRIPTION

- BEORN TRANSITION (BEORN.HOBTT3)
- COOUP TRANSITION (COOUP.HOBTT3)
- DRSDN TRANSITION (DRSDN.HOBTT3)
- ENNTT TRANSITION (ENNTT.HOBTT3)
- FRDDO TRANSITION (FRDDO.HOBTT3)
- GOLLM TRANSITION (GOLLM.HOBTT3)
- KHMYA TRANSITION (KHMYA.HOBTT3)
- ORRKK TRANSITION (ORRKK.HOBTT3)
- SHYRE TRANSITION (SHYRE.HOBTT3)
- STRDR TRANSITION (STRDR.HOBTT3)

From HOBTT on track 053° to cross ENSLL at 12000.

LANDING RUNWAYS 26L/R: From ENSLL on track 032° to RAIIN, then on track 095° to KLOWD, then on track 095° to SWEPT, then on track 095° to KYMMY, then on track 095° to KEAVY, then on track 095°. Expect RADAR vectors to final approach course.

LANDING RUNWAYS 27L/R, 28: From ENSLL on track 049° to EAGYL, then on track 095° to SHURT, then on track 095° to FOGER, then on track 095° to HITT, then on track 095° to YURII, then on track 095°. Expect RADAR vectors to final approach course.

LOST COMMUNICATIONS:

ASSIGNED RUNWAY 28 OR RUNWAY NOT ASSIGNED: Cross HOBTT at or above 14000; cross ENSLL at 12000; cross EAGYL at 12000; cross FOGER at or above 7000; cross YURII at 4000; after YURII turn left direct PRMAN and proceed on the ILS or RNAV RWY 28 approach.

ASSIGNED RUNWAY 27L: Cross HOBTT at or above 14000; cross ENSLL at 12000; cross EAGYL at 12000; cross FOGER at or above 7000; cross YURII at 4000; after YURII turn left direct SLVAA and proceed on the ILS or RNAV RWY 27L approach.

ASSIGNED RUNWAY 27R: Cross HOBTT at or above 14000; cross ENSLL at 12000; cross EAGYL at 12000; cross FOGER at or above 7000; cross YURII at 4000; after YURII turn left direct YOUYU and proceed on the ILS or RNAV RWY 27R approach.

ASSIGNED RUNWAY 26L: Cross HOBTT at or above 14000; cross ENSLL at 12000; cross RAIIN at 12000; cross SWEPT at or above 7000; cross KEAVY at 5000; after KEAVY turn right direct JIRRI and proceed on the ILS or RNAV RWY 26L approach.

ASSIGNED RUNWAY 26R: Cross HOBTT at or above 14000; cross ENSLL at 12000; cross RAIIN at 12000; cross SWEPT at or above 7000; cross KEAVY at 5000; after KEAVY turn right direct ZELow and proceed on the ILS or RNAV RWY 26R approach.