

LOC/DME I-OMO 111.55 Chan 52 (Y)	APP CRS 095°	Rwy Ldg 9000 TDZE 1000 Apt Elev 1026
--	------------------------	--

ILS RWY 10 (SA CAT I)

HARTSFIELD/JACKSON ATLANTA INTL (ATL)

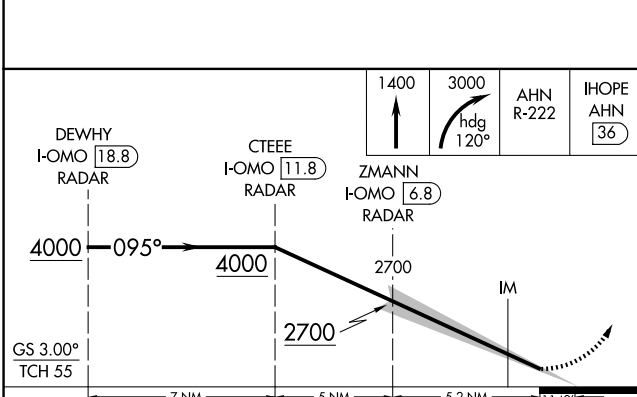
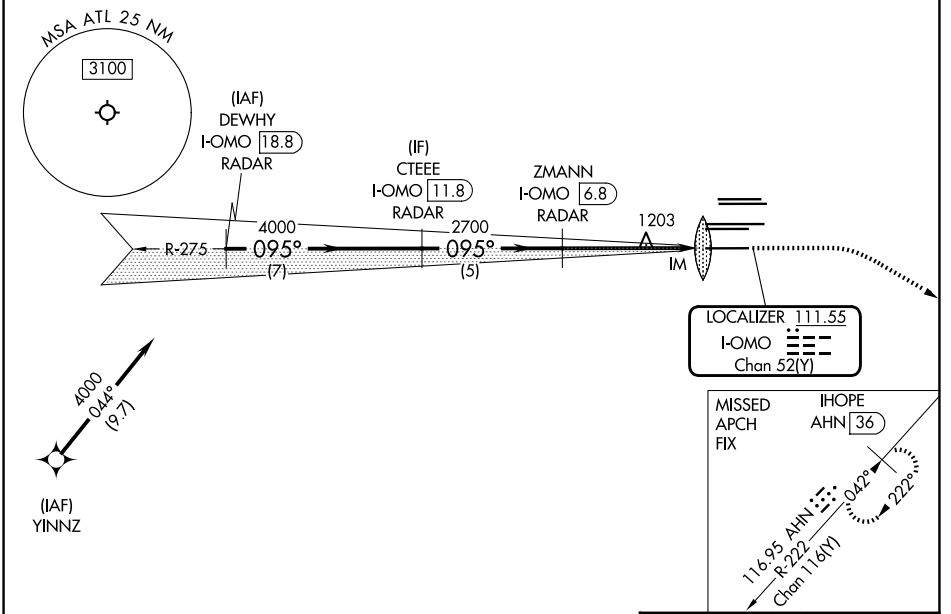
DME or RADAR required. RNP APCH - GPS from YINNZ.

Simultaneous approach authorized with Rwy 9L or 8R or 8L, or Rwy 9L and 8L. Requires specific OPSPEC, MSPEC, or LOA approval and use of HUD to DH.

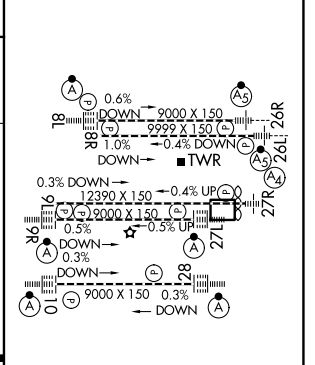
ALSF-2

MISSED APPROACH: Climb to 1400 then climbing right turn to 3000 on heading 120° and AHN R-222 to IHOPE/AHN 36 DME and hold.

D-ATIS	ATLANTA APP CON	ATLANTA TOWER					GND CON	ALL
119.65	127.9 379.9	8L-26R	8R-26L	9L-27R	9R-27L	10-28 RWYS	(8L-26R,8R-26L) (9L-27R,9R-27L)	10-28 RWYS
		119.1	125.325	123.85	119.3	119.5	254.4	121.9 121.75 121.65 254.4



ELEV 1026	D	TDZE 1000
-----------	----------	-----------



CATEGORY	A	B	C	D
S-ILS 10	RA 180/14 150 DA 1150			

SA CATEGORY I ILS - SPECIAL AIRCREW & AIRCRAFT CERTIFICATION REQUIRED

HIRL all Rwys
TDZL/RCLS Rwy 8L, 9R, 10, 26R, 27L and 28

SE-4, 11 JUN 2026 to 09 JUL 2026

SE-4, 11 JUN 2026 to 09 JUL 2026