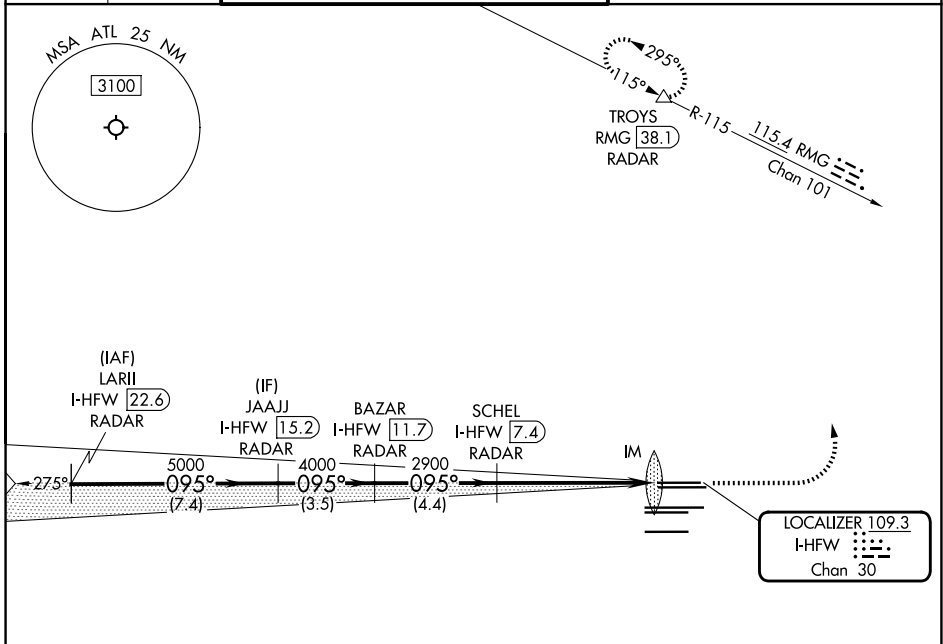


LOC/DME I-HFW <b>109.3</b> Chan <b>30</b>	APP CRS <b>095°</b>	Rwy Ldg 8800 TDZE 1015 Apt Elev 1026
---	------------------------	---

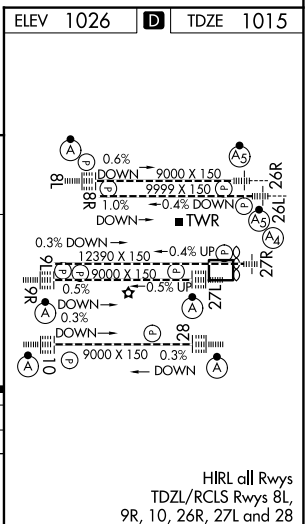
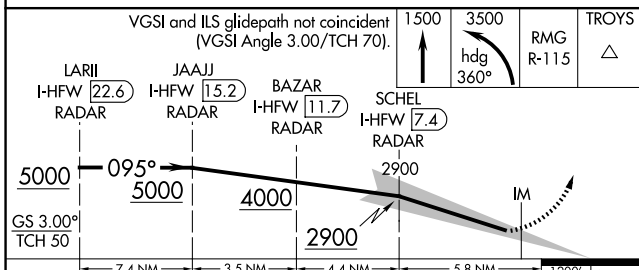
# ILS RWY 8L (SA CAT I)

HARTSFIELD/JACKSON ATLANTA INTL (ATL)

RADAR required for procedure entry. DME or RADAR required.		ALSIF-2	MISSED APPROACH: Climb to 1500 then climbing left turn to 3500 on heading 360° and RMG VORTAC R-115 to TROYS/RMG 38.1 DME/RADAR and hold.	
Simultaneous approach authorized. Requires specific OPSPEC, MSPEC, or LOA approval.				
D-ATIS <b>119.65</b>	ATLANTA APP CON <b>127.9 379.9</b>	ATLANTA TOWER 8L-26R 8R-26L 9L-27R 9R-27L 10-28 RWYS	ALL RWYS <b>254.4</b>	GND CON (8L-26R,8R-26L) (9L-27R,9R-27L) 10-28 RWYS <b>121.9 121.75 121.65 254.4</b>



ELEV 1026	<b>D</b>	TDZE 1015
-----------	----------	-----------



CATEGORY	A	B	C	D
S-ILS 8L	RA 147/14 150 DA 1165			

**SA CATEGORY I ILS - SPECIAL AIRCREW & AIRCRAFT CERTIFICATION REQUIRED**

SE-4, 11 JUN 2026 to 09 JUL 2026

SE-4, 11 JUN 2026 to 09 JUL 2026