

ATLANTA, GEORGIA

AL-26 (FAA)

26078

LOC/DME I-OMO <b>111.55</b>	APP CRS <b>095°</b>	Rwy Ldg <b>9000</b>
Chan <b>52 (Y)</b>		TDZE <b>1000</b>
		Apt Elev <b>1026</b>

# ILS or LOC RWY 10

HARTSFIELD/JACKSON ATLANTA INTL (ATL)

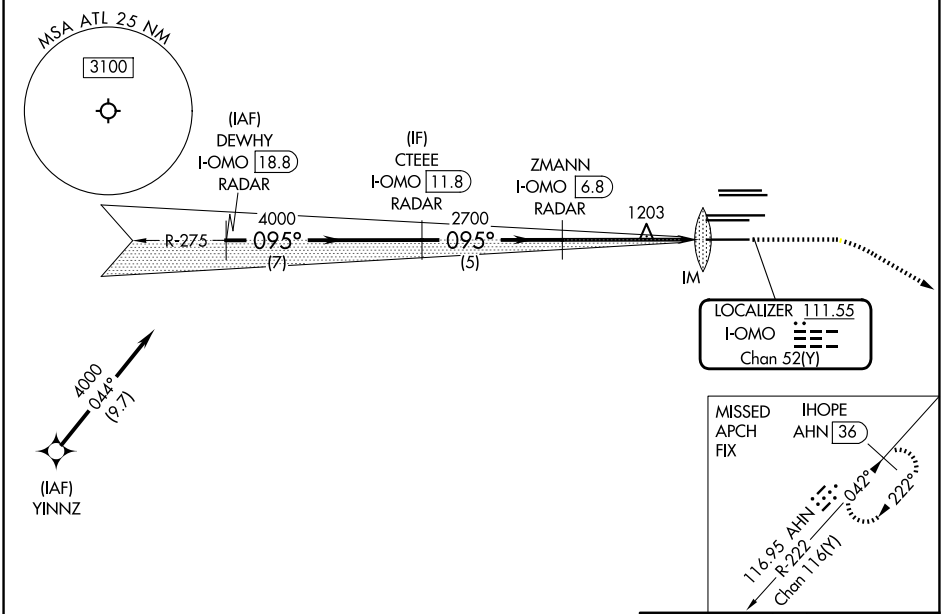
DME or RADAR required. RNP APCH - GPS from YINNZ.

Simultaneous approach authorized with Rwy 9L or 8R or 8L, or Rwy 9L and 8L. Localizer not suitable for electronic rollout guidance.

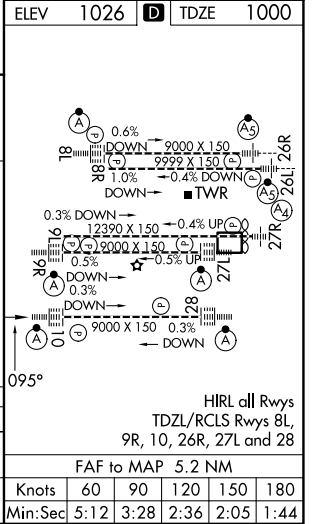
ALSf-2

MISSED APPROACH: Climb to 1400 then dimming right turn to 3000 on heading 120° and AHN R-222 to IHOPE/AHN 36 DME and hold.

D-ATIS <b>119.65</b>	ATLANTA APP CON <b>127.9 379.9</b>	ATLANTA TOWER 8L-26R 8R-26L 9L-27R 9R-27L 10-28 RWYS <b>119.1 125.325 123.85 119.3 119.5 254.4</b>	ALL RWYS (8L-26R,8R-26L) (9L-27R,9R-27L) 10-28 RWYS <b>121.9 121.75 121.65 254.4</b>
-------------------------	---------------------------------------	--	--



	ELEV 1026	TDZE 1000
	DEWHY I-OMO 18.8 RADAR	CTEE E I-OMO 11.8 RADAR
	ZMANN I-OMO 6.8 RADAR	IHOPE AHN 36
	4000	3000
	095°	hdg 120°
	7 NM	5 NM
	3.9 NM	1.1 NM
	0.1 NM	
	GS 3.00°	TCH 55
CATEGORY	A	B
S-ILS 10	1200/18	200 (200-½)
S-LOC 10	1460/24	460 (500-½)



ATLANTA, GEORGIA  
Amdt 5C 25JAN24

HARTSFIELD/JACKSON ATLANTA INTL (ATL)  
33°38'N-84°26'W

# ILS or LOC RWY 10

SE-4, 11 JUN 2026 to 09 JUL 2026

SE-4, 11 JUN 2026 to 09 JUL 2026