

ATLANTA, GEORGIA

AL-26 (FAA)

# ILS PRM RWY 10 (CLOSE PARALLEL)

HARTSFIELD/JACKSON ATLANTA INTL (ATL)

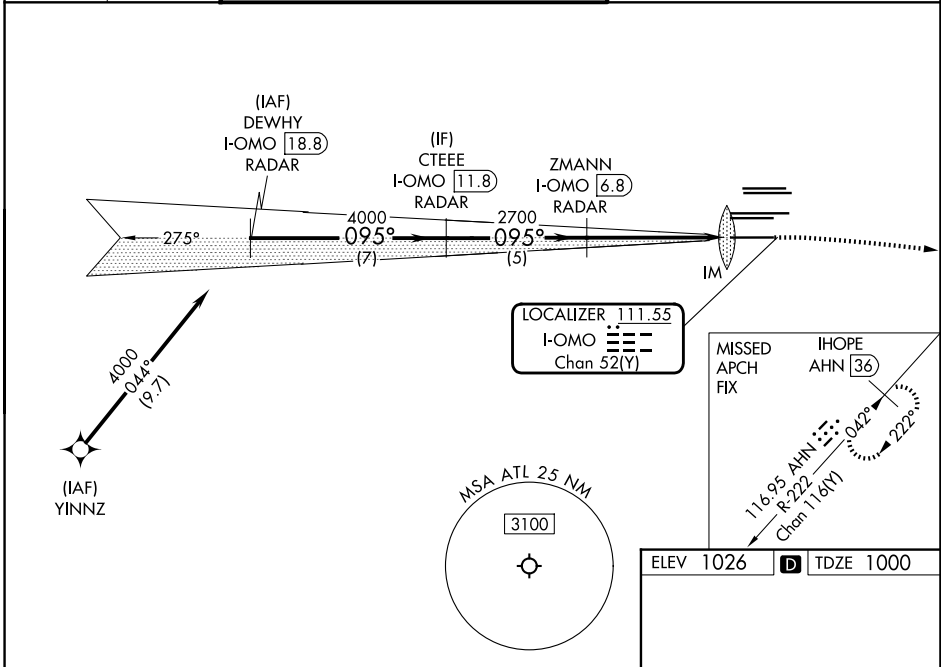
LOC/DME I-OMO <b>111.55</b> Chan <b>52 (Y)</b>	APP CRS <b>095°</b>	Rwy Ldg <b>9000</b> TDZE <b>1000</b> Apt Elev <b>1026</b>
--	------------------------	---

DME or RADAR required. RNP APCH - GPS from YINNZ.

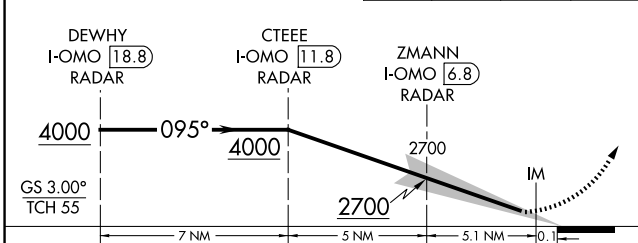
Simultaneous approach authorized. Procedure NA when glide slope not available (ILS procedures only). Dual VHF Comm required. See additional requirements on AAUP. Localizer not suitable for electronic rollout guidance.

ALSF-2  
MISSED APPROACH: Climb to 1400 then climbing right turn to 3000 on heading 120° and AHN R-222 to IHOPE/AHN 36 DME and hold.

D-ATIS <b>119.65</b>	ATLANTA APP CON <b>127.9 379.9</b>	ATLANTA TOWER 8L-26R 8R-26L 9L-27R 9R-27L 10-28 RWYS <b>119.1 125.325 123.85 119.3 119.5 254.4</b> <b>PRM 133.425</b>				ALL RWYS <b>121.9 121.75 121.65 254.4</b>	GND CON 10-28 RWYS <b>121.9 121.75 121.65 254.4</b>	ALL RWYS
-------------------------	---------------------------------------	--	--	--	--	--	---	----------

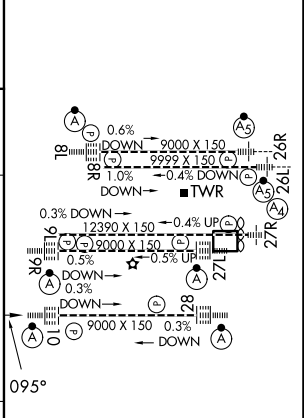


1400	3000	AHN R-222	IHOPE AHN 36
↑	hdg 120°		



CATEGORY	A	B	C	D
S-ILS 10		1200/18	200 (200-1/2)	

ELEV 1026	TDZE 1000
-----------	-----------



HIRL all Rwys  
TDZL/RCLS Rwys 8L,  
9R, 10, 26R, 27L and 28

SE-4, 11 JUN 2026 to 09 JUL 2026

SE-4, 11 JUN 2026 to 09 JUL 2026

ATLANTA, GEORGIA  
Amdt 5 30DEC21

33°38'N-84°26'W

HARTSFIELD/JACKSON ATLANTA INTL (ATL)

# ILS PRM RWY 10 (CLOSE PARALLEL)