

ATLANTA, GEORGIA

AL-26 (FAA)

26078  
**ILS PRM RWY 27L (CAT II)**

**(CLOSE PARALLEL)**

HARTSFIELD/JACKSON ATLANTA INTL (ATL)

LOC/DME I-FSQ <b>108.5</b> Chan <b>22</b>	APP CRS <b>275°</b>	Rwy Ldg TDZE Apt Elev <b>8865</b> <b>999</b> <b>1026</b>
---	------------------------	---

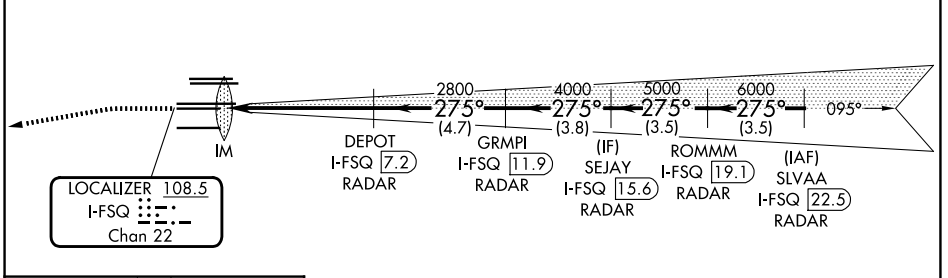
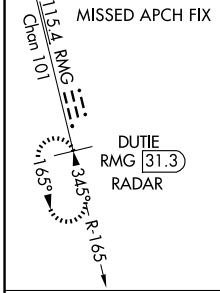
RADAR required for procedure entry. DME or RADAR required.

Simultaneous approach authorized. Use of FD or AP required during simultaneous operations. Dual VHF comm required. See additional requirements on AAUP.

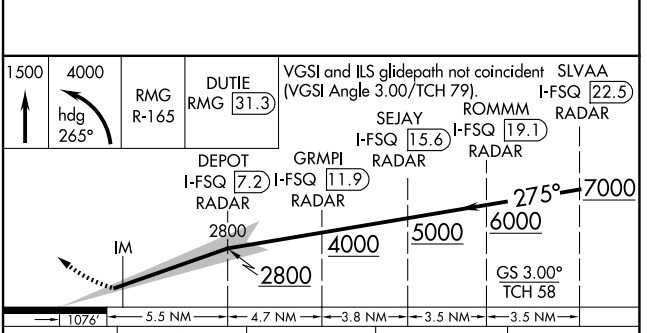
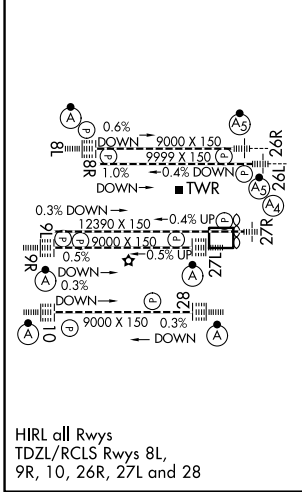
ALS-F-2

MISSED APPROACH: Climb to 1500 then climbing left turn to 4000 on heading 265° and RMG VORTAC R-165 to DUTIE/RMG 31.3 DME/RADAR and hold.

D-ATIS <b>119.65</b>	ATLANTA APP CON <b>127.9 379.9</b>	ATLANTA TOWER 8L-26R 8R-26L 9L-27R 9R-27L 10-28 RWYS <b>119.1 125.325 123.85 119.3 119.5 254.4</b> <b>PRM 132.55</b>	ALL RWYS (8L-26R,8R-26L) (9L-27R,9R-27L) 10-28 RWYS <b>121.9 121.75 121.65 254.4</b>
-------------------------	---------------------------------------	---	--



ELEV <b>1026</b>	<b>D</b>	TDZE <b>999</b>
------------------	----------	-----------------



CATEGORY	A	B	F	C	D
S-ILS 27L	RA 127/12		100	DA 1099	

**CATEGORY II ILS- SPECIAL AIRCREW & AIRCRAFT CERTIFICATION REQUIRED**

HIRL all Rwys  
TDZL/RCLS Rwys 8L,  
9R, 10, 26R, 27L and 28

33°38'N-84°26'W HARTSFIELD/JACKSON ATLANTA INTL (ATL)  
**ILS PRM RWY 27L (CAT II) (CLOSE PARALLEL)**

SE-4, 11 JUN 2026 to 09 JUL 2026

SE-4, 11 JUN 2026 to 09 JUL 2026