

ATLANTA, GEORGIA

AL-26 (FAA)

ILS PRM RWY 28 (CAT II) (CLOSE PARALLEL)

26078

LOC/DME I-PKU 111.75 Chan 54(Y)	APP CRS 275°	Rwy Ldg TDZE 998 Apt Elev 1026
---	------------------------	--

HARTSFIELD/JACKSON ATLANTA INTL (ATL)

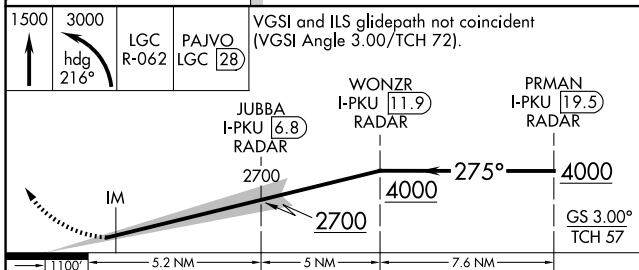
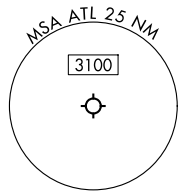
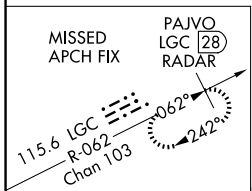
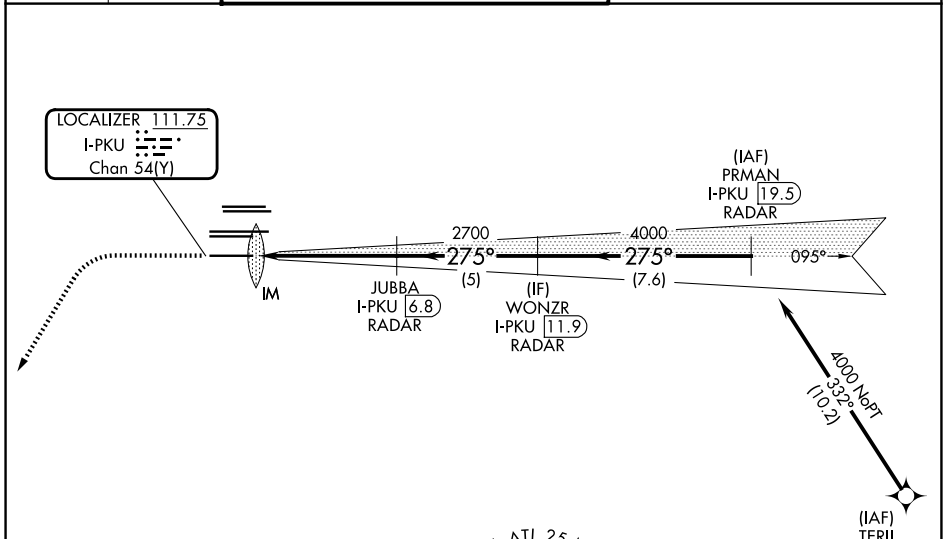
RNAV 1-GPS or RADAR required for procedure entry.
From TERII: RNAV 1-GPS required. DME or RADAR required.

ALSF-2

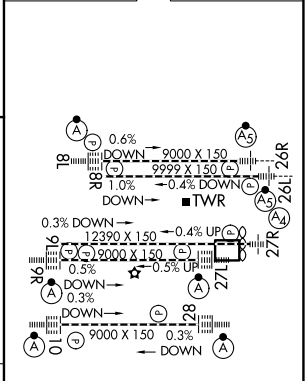
MISSED APPROACH: Climb to 1500 then climbing left turn to 3000 on heading 216° and LGC VORTAC R-062 to PAJVO/LGC 28 DME/RADAR and hold.

Simultaneous approach authorized. Use of FD or AP required during simultaneous operations. Dual VHF comm required. See additional requirements on AAUP.

D-ATIS 119.65	ATLANTA APP CON 127.9 379.9	ATLANTA TOWER 8L-26R 8R-26L 9L-27R 9R-27L 10-28 RWYS 119.1 125.325 123.85 119.3 119.5 254.4 PRM 133.425	ALL RWYS (8L-26R,8R-26L) (9L-27R,9R-27L) 10-28 121.9 121.75 121.65 254.4
-------------------------	---------------------------------------	--	---



ELEV 1026	D TDZE 998
-----------	-------------------



CATEGORY A B C D

S-ILS 28 RA 188/12 100 DA 1098

CATEGORY II ILS - SPECIAL AIRCREW & AIRCRAFT CERTIFICATION REQUIRED

HIRL all Rwys
TDZL/RCLS Rwys 8L,
9R, 10, 26R, 27L and 28

ATLANTA, GEORGIA
Amdt 5 07OCT21

33°38'N-84°26'W

HARTSFIELD/JACKSON ATLANTA INTL (ATL)

ILS PRM RWY 28 (CAT II) (CLOSE PARALLEL)

SE-4, 11 JUN 2026 to 09 JUL 2026

SE-4, 11 JUN 2026 to 09 JUL 2026