

ILS PRM RWY 9R (SA CAT I)


(CLOSE PARALLEL)

HARTSFIELD/JACKSON ATLANTA INTL (ATL)

LOC/DME I-FUN 108.9 Chan 26	APP CRS 095°	Rwy Ldg TDZE 1026 Apt Elev 1026	9000
---	------------------------	--	-------------

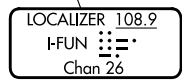
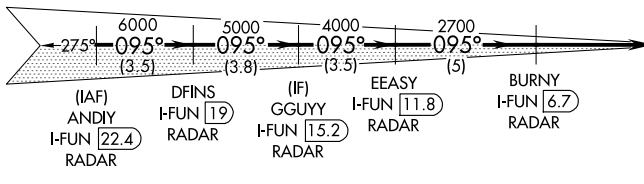
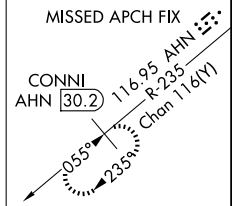
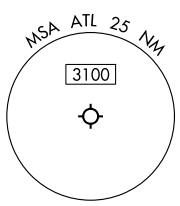
RADAR required for procedure entry, DME.

Requires specific OPSPEC, MSPEC, or LOA approval. Simultaneous approach authorized. Use of FD or AP required during simultaneous operations. Dual VHF comm required. See additional requirements on AAUP.

ALSIF-2 

MISSED APPROACH: Climb to 4000 on heading 100° and AHN VOR/DME R-235 to CONNI/AHN 30.2 DME and hold.

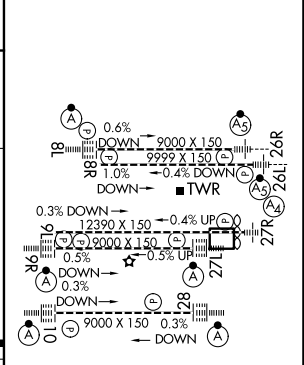
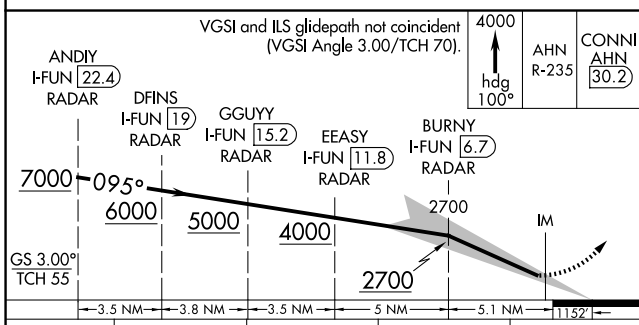
D-ATIS 119.65	ATLANTA APP CON 127.9 379.9	ATLANTA TOWER ALL 8L-26R 8R-26L 9L-27R 9R-27L 10-28 RWYS 119.1 125.325 123.85 119.3 119.5 254.4 PRM 132.55				GND CON ALL (8L-26R,8R-26L) (9L-27R,9R-27L) 10-28 RWYS 121.9 121.75 121.65 254.4
-------------------------	---------------------------------------	---	--	--	--	---



SE-4, 11 JUN 2026 to 09 JUL 2026

SE-4, 11 JUN 2026 to 09 JUL 2026

ELEV 1026	D TDZE 1026
-----------	--------------------



CATEGORY	A	B	C	D
5-ILS 9R	RA 196/14 150 DA 1176			

SA CATEGORY I ILS - SPECIAL AIRCREW & AIRCRAFT CERTIFICATION REQUIRED

HIRL all Rwys
TDZL/RCLS Rwys 8L, 9R, 10, 26R, 27L and 28