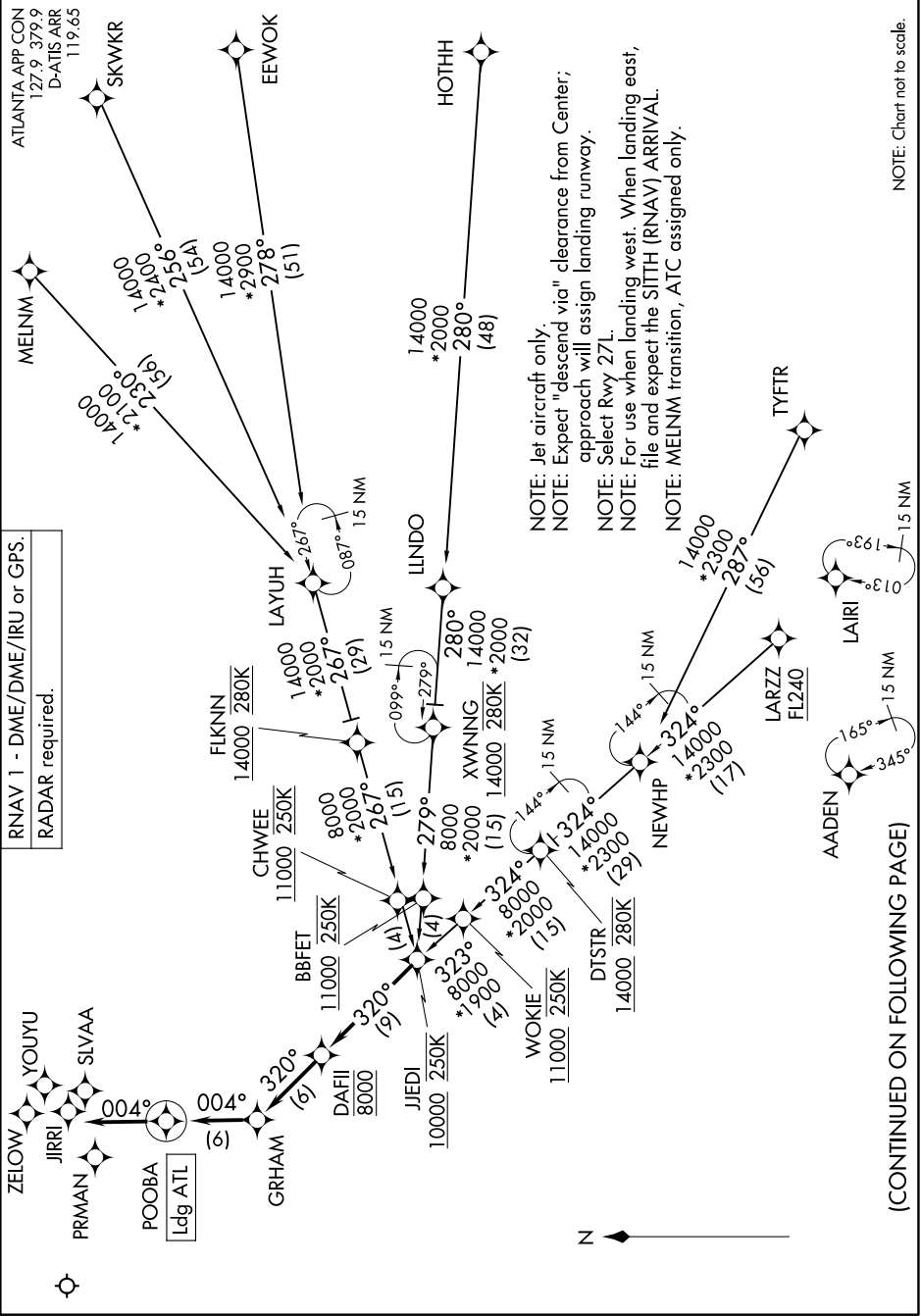


JJEDI FOUR ARRIVAL (RNAV)

ATLANTA, GEORGIA

SE-4, 11 JUN 2026 to 09 JUL 2026



JJEDI FOUR ARRIVAL (RNAV)

ATLANTA, GEORGIA

HARTSFIELD/JACKSON ATLANTA INTL (ATL)

SE-4, 11 JUN 2026 to 09 JUL 2026

ARRIVAL ROUTE DESCRIPTION

EEWOK TRANSITION (EEWOK.JJEDI4)HOTHH TRANSITION (HOTHH.JJEDI4)LARZZ TRANSITION (LARZZ.JJEDI4)LAYUH TRANSITION (LAYUH.JJEDI4)MELNM TRANSITION (MELNM.JJEDI4)SKWKR TRANSITION (SKWKR.JJEDI4)TYFTR TRANSITION (TYFTR.JJEDI4)

From JJEDI on track 320° to cross DAFII at 8000, then on track 320° to GRHAM, then on track 004° to POOBA, then on track 004°. Expect RADAR vectors to final approach course.

LOST COMMUNICATIONS:

ASSIGNED RUNWAY 28 OR RUNWAY NOT ASSIGNED: Cross JJEDI at or above 10000; cross DAFII at 8000; cross POOBA at 5000; after POOBA descend to 3000 and proceed direct PRMAN; proceed on the ILS or RNAV RWY 28 approach.

ASSIGNED RUNWAY 27L: Cross JJEDI at or above 10000; cross DAFII at 8000; cross POOBA at 6000; after POOBA proceed direct SLVAA and proceed on the ILS or RNAV RWY 27L approach.

ASSIGNED RUNWAY 27R: Cross JJEDI at or above 10000; cross DAFII at 8000; cross POOBA at 6000; after POOBA proceed direct YOUYU and proceed on the ILS or RNAV RWY 27R approach.

ASSIGNED RUNWAY 26L: Cross JJEDI at or above 10000; cross DAFII at 8000; cross POOBA at 6000; after POOBA proceed direct JIRRI and proceed on the ILS or RNAV RWY 26L approach.

ASSIGNED RUNWAY 26R: Cross JJEDI at or above 10000; cross DAFII at 8000; cross POOBA at 6000; after POOBA proceed direct ZELOW and proceed on the ILS or RNAV RWY 26R approach.