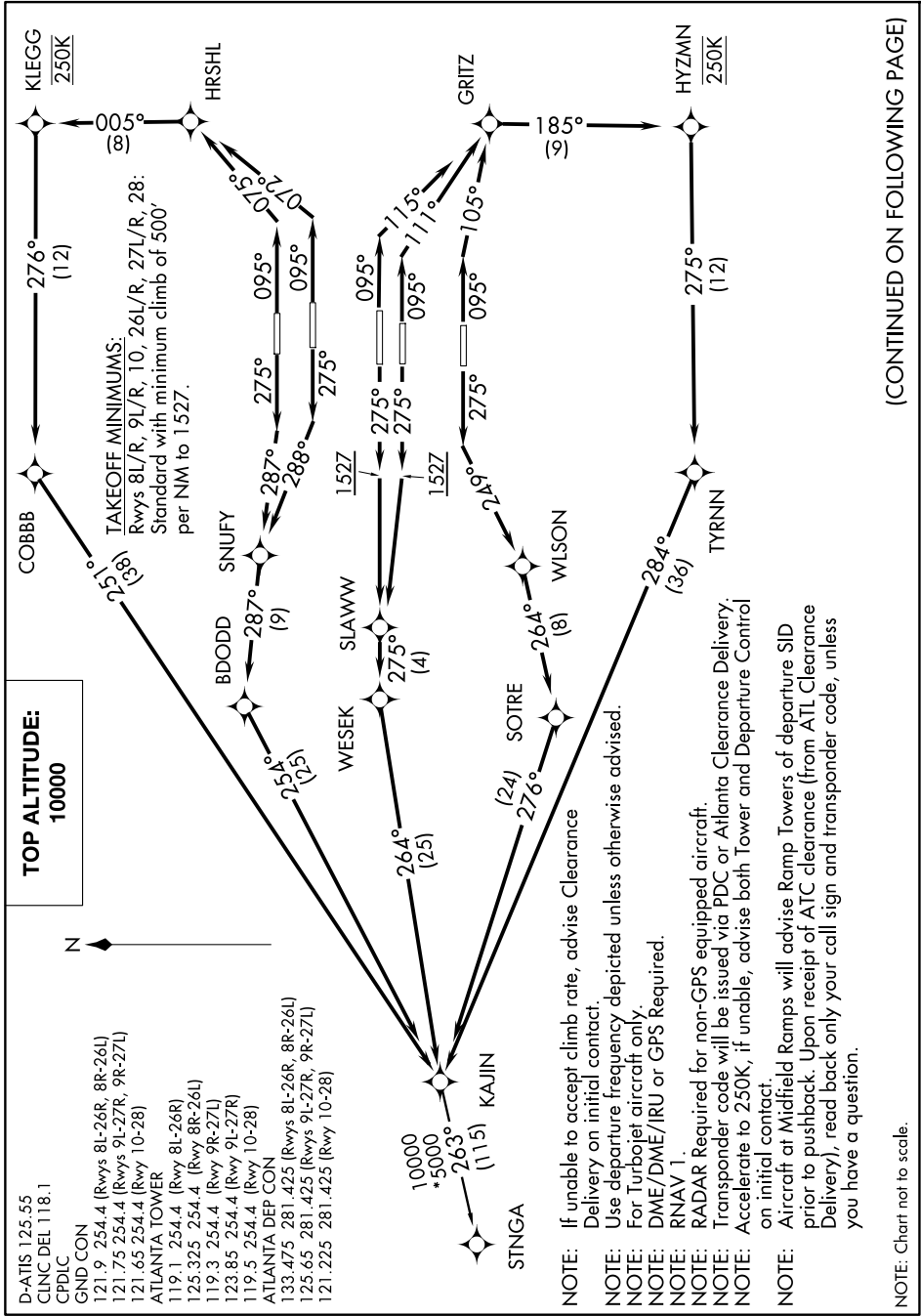


KAJIN TWO DEPARTURE (RNAV)

SE-4, 11 JUN 2026 to 09 JUL 2026



(CONTINUED ON FOLLOWING PAGE)

SE-4, 11 JUN 2026 to 09 JUL 2026

KAJIN TWO DEPARTURE (RNAV)

NOTE: Chart not to scale.



DEPARTURE ROUTE DESCRIPTION
SEE ADDITIONAL REQUIREMENTS ON AAUP

TAKEOFF RWY 8L: Climb heading 095° to intercept course 075° to HRSHL, then on depicted route to KAJIN, maintain 250K to KLEGG, thence. . .

TAKEOFF RWY 8R: Climb heading 095° to intercept course 072° to HRSHL, then on depicted route to KAJIN, maintain 250K to KLEGG, thence. . .

TAKEOFF RWY 9L: Climb heading 095° to intercept course 115° to GRITZ, then on depicted route to KAJIN, maintain 250K to HYZMN, thence. . .

TAKEOFF RWY 9R: Climb heading 095° to intercept course 111° to GRITZ, then on depicted route to KAJIN, maintain 250K to HYZMN, thence. . .

TAKEOFF RWY 10: Climb heading 095° to intercept course 105° to GRITZ, then on depicted route to KAJIN, maintain 250K to HYZMN, thence. . .

TAKEOFF RWY 26L: Climb heading 275° to intercept course 288° to SNUFY, then on depicted route to KAJIN, thence. . .

TAKEOFF RWY 26R: Climb heading 275° to intercept course 287° to SNUFY, then on depicted route to KAJIN, thence. . .

TAKEOFF RWYS 27L/R: Climb heading 275° to 1527, then direct SLAWW, then on depicted route to KAJIN, thence. . .

TAKEOFF RWY 28: Climb heading 275° to intercept course 249° to WLSON, then on depicted route to KAJIN, thence. . .

. . .maintain 10000. Expect clearance to filed altitude ten minutes after departure.

STNGA TRANSITION (KAJIN2.STNGA)

SE-4, 11 JUN 2026 to 09 JUL 2026

SE-4, 11 JUN 2026 to 09 JUL 2026