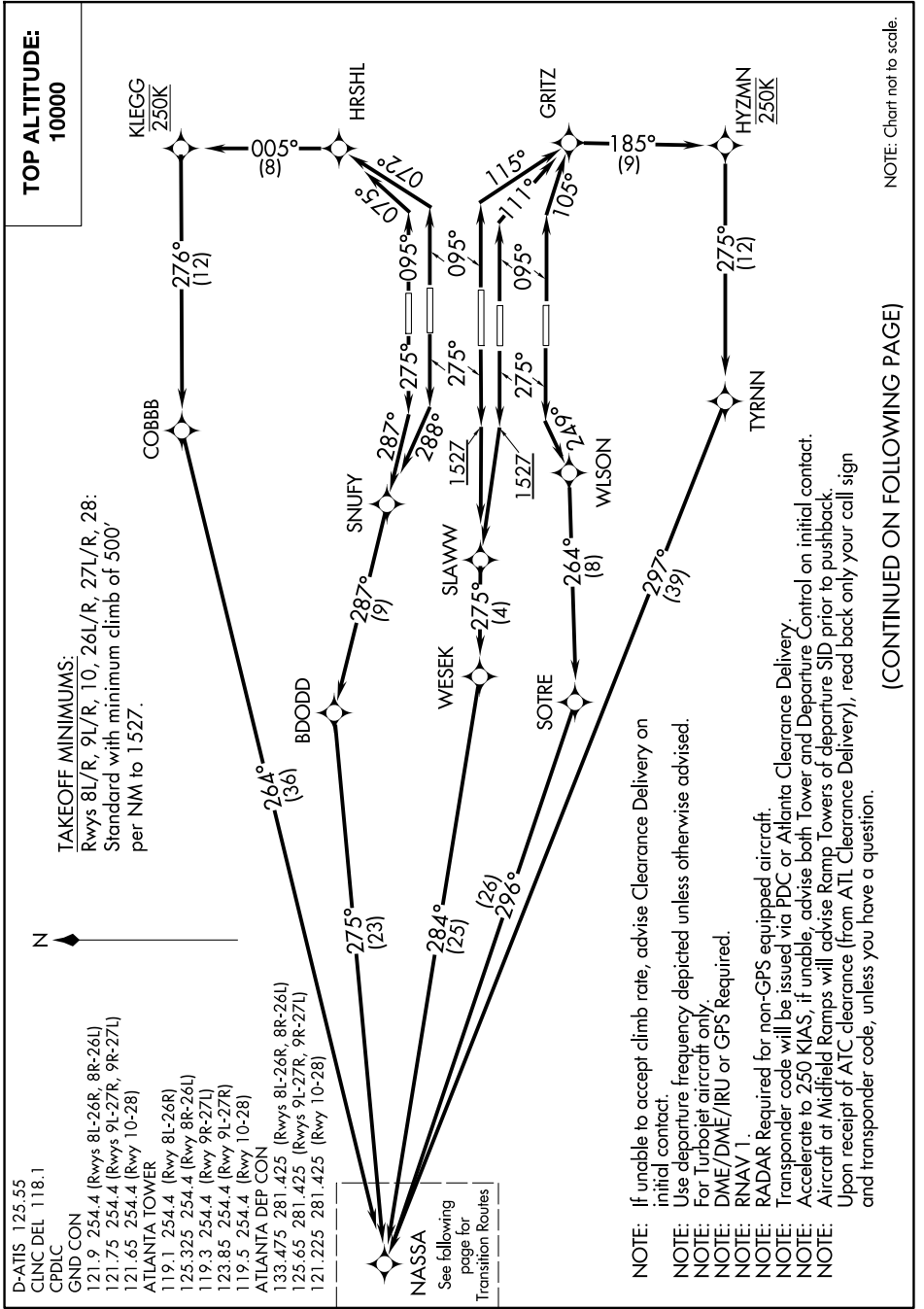


NASSA TWO DEPARTURE (RNAV) Departure Routes

SE-4, 11 JUN 2026 to 09 JUL 2026



NASSA TWO DEPARTURE (RNAV) Departure Routes

(CONTINUED ON FOLLOWING PAGE)

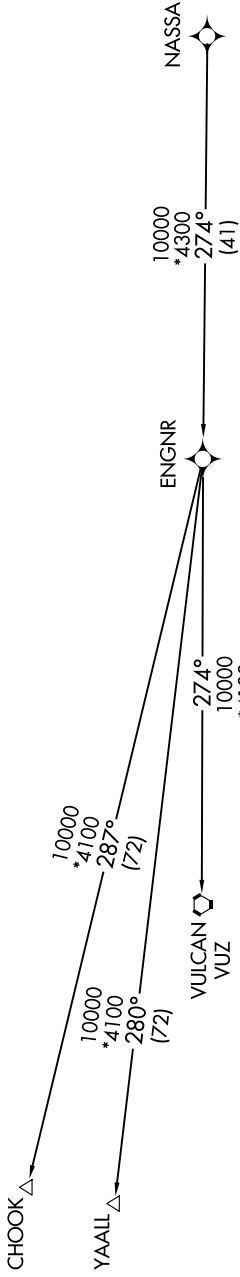
SE-4, 11 JUN 2026 to 09 JUL 2026

SE-4, 11 JUN 2026 to 09 JUL 2026

- D-ATIS 125.55
- CLNC DEL 118.1
- CPDIC
- GND CON
- 121.9 254.4 (Rwys 8L-26R, 8R-26L)
- 121.75 254.4 (Rwys 9L-27R, 9R-27L)
- 121.65 254.4 (Rwy 10-28)
- ATLANTA TOWER
- 119.1 254.4 (Rwy 8L-26R)
- 125.325 254.4 (Rwy 8R-26L)
- 119.3 254.4 (Rwy 9R-27L)
- 123.85 254.4 (Rwy 9L-27R)
- 119.5 254.4 (Rwy 10-28)
- ATLANTA DEP CON
- 133.475 281.425 (Rwys 8L-26R, 8R-26L)
- 125.65 281.425 (Rwys 9L-27R, 9R-27L)
- 121.225 281.425 (Rwy 10-28)



**TAKEOFF MINIMUMS:**  
 Rwys 8L/R, 9L/R, 10, 26L/R, 27L/R, 28:  
 Standard with minimum climb of 500'  
 per NM to 1527.



- NOTE:** If unable to accept climb rate, advise Clearance Delivery on initial contact.
- NOTE:** Use departure frequency depicted unless otherwise advised.
- NOTE:** For Turbojet aircraft only.
- NOTE:** DME/DME/IRU or GPS Required.
- NOTE:** RNAV 1.
- NOTE:** RADAR Required for non-GPS equipped aircraft.
- NOTE:** Transponder code will be issued via PDC or Atlanta Clearance Delivery.
- NOTE:** Accelerate to 250 KIAS, if unable, advise both Tower and Departure Control on initial contact.
- NOTE:** Aircraft at Midfield Ramps will advise Ramp Towers of departure SID prior to pushback.
- NOTE:** Upon receipt of ATC clearance (from ATL Clearance Delivery), read back only your call sign and transponder code, unless you have a question.

**TOP ALTITUDE:**  
 10000

NOTE: Chart not to scale.

(CONTINUED ON FOLLOWING PAGE)

SE-4, 11 JUN 2026 to 09 JUL 2026



DEPARTURE ROUTE DESCRIPTION  
SEE ADDITIONAL REQUIREMENTS ON AAUP

TAKEOFF RWY 8L: Climb heading 095° to intercept course 075° to HRSHL, then on depicted route to NASSA, maintain 250 KIAS until KLEGG, thence. . . .

TAKEOFF RWY 8R: Climb heading 095° to intercept course 072° to HRSHL, then on depicted route to NASSA, maintain 250 KIAS until KLEGG, thence. . . .

TAKEOFF RWY 9L: Climb heading 095° to intercept course 115° to GRITZ, then on depicted route to NASSA, maintain 250 KIAS until HYZMN, thence. . . .

TAKEOFF RWY 9R: Climb heading 095° to intercept course 111° to GRITZ, then on depicted route to NASSA, maintain 250 KIAS until HYZMN, thence. . . .

TAKEOFF RWY 10: Climb heading 095° to intercept course 105° to GRITZ, then on depicted route to NASSA, maintain 250 KIAS until HYZMN, thence. . . .

TAKEOFF RWY 26L: Climb heading 275° to intercept course 288° to SNUFY, then on depicted route to NASSA, thence. . . .

TAKEOFF RWY 26R: Climb heading 275° to intercept course 287° to SNUFY, then on depicted route to NASSA, thence. . . .

TAKEOFF RWYS 27L/R: Climb heading 275° to 1527, then direct SLAWW, then on depicted route to NASSA, thence. . . .

TAKEOFF RWY 28: Climb heading 275° to intercept course 249° to WLSON, then on depicted route to NASSA, thence. . . .

. . . .maintain 10000. Expect clearance to filed altitude ten minutes after departure.

CHOOK TRANSITION (NASSA2.CHOOK)

VULCAN TRANSITION (NASSA2.VUZ)

YAALL TRANSITION (NASSA2.YAALL)

SE-4, 11 JUN 2026 to 09 JUL 2026

SE-4, 11 JUN 2026 to 09 JUL 2026