

WAAS CH <b>65700</b> <b>W27A</b>	APP CRS <b>275°</b>	Rwy Ldg <b>8865</b> TDZE <b>999</b> Apt Elev <b>1026</b>
--	------------------------	--

# RNAV (GPS) RWY 27L

HARTSFIELD/JACKSON ATLANTA INTL (ATL)

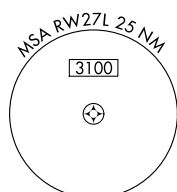
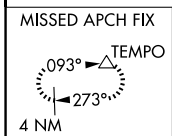
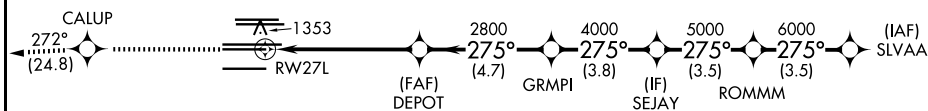
▼ For uncompensated Baro-VNAV systems, LNAV/VNAV NA below -7°C (20°F) or above 54°C (130°F). DME/DME RNP-0.3 NA. Simultaneous approach authorized with Rwy 26R or 26L. LNAV procedure NA during simultaneous operations. Use of FD or AP providing RNAV track guidance required during simultaneous operations.

ALSF-2

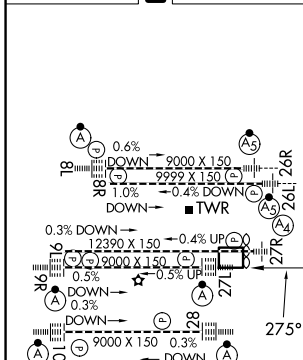


MISSED APPROACH: Climb to 4000 direct CALUP and on track 272° to TEMPO and hold.

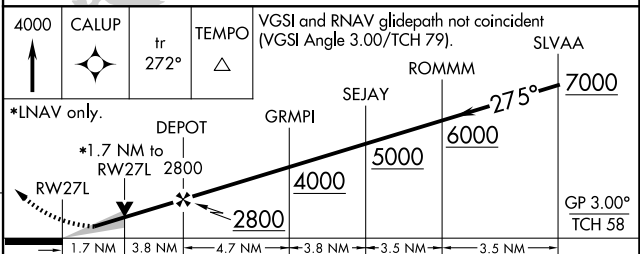
D-ATIS	ATLANTA APP CON	ATLANTA TOWER					ALL RWYS	GND CON	ALL RWYS
<b>119.65</b>	<b>127.9 379.9</b>	8L-26R	8R-26L	9L-27R	9R-27L	10-28	(8L-26R,8R-26L)	(9L-27R,9R-27L)	10-28
		<b>119.1</b>	<b>125.325</b>	<b>123.85</b>	<b>119.3</b>	<b>119.5</b>	<b>121.9</b>	<b>121.75</b>	<b>121.65</b>
						<b>254.4</b>			<b>254.4</b>



ELEV <b>1026</b>	<b>D</b>	TDZE <b>999</b>
------------------	----------	-----------------



## RADAR REQUIRED



4000	CALUP	tr 272°	TEMPO	VGSI and RNAV glidepath not coincident (VGSI Angle 3.00/TCH 79).			
*LNAV only.				DEPOT	GRMPI	SEJAY	ROMMMM
RWY 27L				2800	4000	5000	6000
1.7 NM				3.8 NM	4.7 NM	3.8 NM	3.5 NM
CATEGORY	A	B	C	D			
LPV DA	1199/18			200 (200-½)			
LNAV/VNAV DA	1528-1¾			529 (600-1¾)			
LNAV MDA	1620/24	621 (600-½)		1620-1¾	621 (600-1¾)		

HIRL all Rwys  
TDZL/RCLS Rwys 8L,  
9R, 10, 26R, 27L and 28

SE-4, 11 JUN 2026 to 09 JUL 2026

SE-4, 11 JUN 2026 to 09 JUL 2026