

ATLANTA, GEORGIA

AL-26 (FAA)

26078

WAAS CH <b>48800</b> <b>W08D</b>	APP CRS <b>095°</b>	Rwy Ldg TDZE <b>1024</b> Apt Elev <b>1026</b>	<b>9999</b>
--	------------------------	---	-------------

# RNAV (GPS) RWY 8R

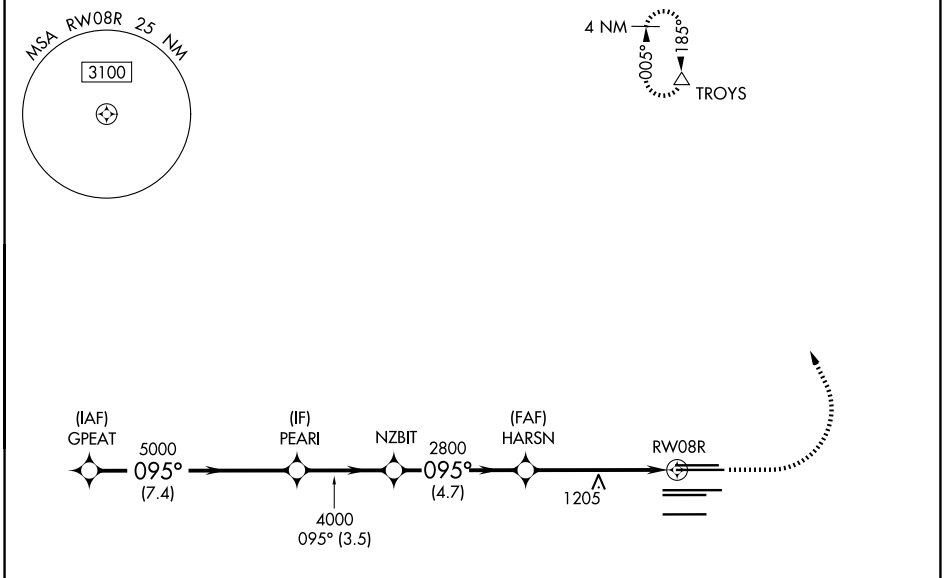
HARTSFIELD/JACKSON ATLANTA INTL (ATL)

RNP APCH - GPS.  
RADAR required.

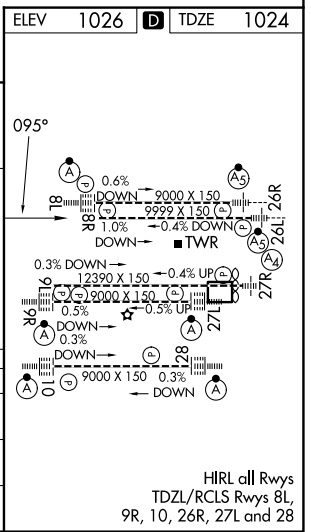
▼ For uncompensated Baro-VNAV systems, LNAV/VNAV NA below -5°C or above 54°C. Simultaneous approach authorized with Rwy 9L or 9R or 10. LNAV procedure NA during simultaneous operations. Use of FD or AP providing RNAV track guidance required during simultaneous operations.

MISSED APPROACH:  
Climb to 1500 then climbing left turn to 3500 direct TROYS and hold.

D-ATIS <b>119.65</b>	ATLANTA APP CON <b>127.9 379.9</b>	ATLANTA TOWER				ALL RWYS	GND CON	ALL RWYS
		8L-26R	8R-26L	9L-27R	9R-27L	10-28	(8L-26R, 8R-26L) (9L-27R, 9R-27L)	10-28
		<b>119.1</b>	<b>125.325</b>	<b>123.85</b>	<b>119.3</b>	<b>119.5 254.4</b>	<b>121.9</b>	<b>121.75 121.65 254.4</b>



ELEV 1026		TDZE 1024
VGSi and RNAV glidepath not coincident (VGSi Angle 3.00/TCH 67).		
GPEAT		PEARL
5000	095°	5000
GP 3.00° TCH 53		4000
7.4 NM		3.5 NM
CATEGORY A		B
LPV DA	1282/40	258 (300-¾)
LNAV/VNAV DA	1440/60	416 (500-1¼)
LNAV MDA	1460/55	436 (500-1)
		C
		1460-1¼
		D
		436 (500-1¼)



ATLANTA, GEORGIA  
Amdt 5 31OCT24

33°38'N-84°26'W

# RNAV (GPS) RWY 8R

SE-4, 11 JUN 2026 to 09 JUL 2026

SE-4, 11 JUN 2026 to 09 JUL 2026