

WAAS CH <b>97400</b> <b>W09B</b>	APP CRS <b>095°</b>	Rwy Ldg TDZE <b>1026</b> Apt Elev <b>1026</b>
--	------------------------	---

# RNAV (GPS) RWY 9R

HARTSFIELD/JACKSON ATLANTA INTL (ATL)

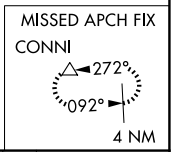
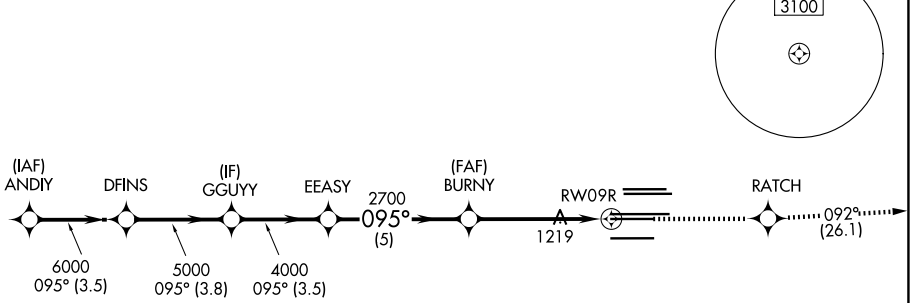
**▽** For uncompensated Baro-VNAV systems, LNAV/VNAV NA below -7°C (20°F) or above 54°C (130°F). DME/DME RNP-0.3 NA. Simultaneous approach authorized with Rwy 8L or 8R. LNAV procedure NA during simultaneous operations. Use of FD or AP providing RNAV track guidance required during simultaneous operations.

ALSF-2

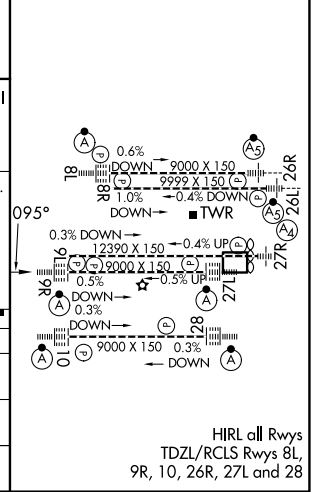
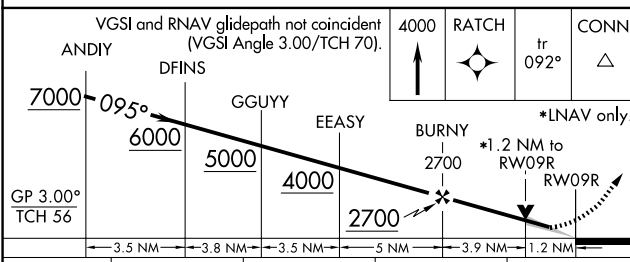
MISSED APPROACH: Climb to 4000 direct RATCH and on track 092° to CONNI and hold.

D-ATIS <b>119.65</b>	ATLANTA APP CON <b>127.9 379.9</b>	ATLANTA TOWER 8L-26R 8R-26L 9L-27R 9R-27L 10-28 RWYS <b>119.1 125.325 123.85 119.3 119.5 254.4</b>				ALL RWYS <b>121.9</b>	GND CON (8L-26R,8R-26L) (9L-27R,9R-27L) 10-28 RWYS <b>121.75 121.65 254.4</b>	ALL RWYS
-------------------------	---------------------------------------	--	--	--	--	--------------------------	---	----------

## RADAR REQUIRED



ELEV 1026 **D** TDZE 1026



CATEGORY	A	B	C	D
LPV DA		1226/18	200 (200-½)	
LNAV/VNAV DA		1403/40	377 (500-¾)	
LNAV MDA	1480/24	454 (500-½)	1480/45	454 (500-¾)

HIRT all Rwys  
TDZL/RCLS Rwy 8L,  
9R, 10, 26R, 27L and 28

SE-4, 11 JUN 2026 to 09 JUL 2026

SE-4, 11 JUN 2026 to 09 JUL 2026