


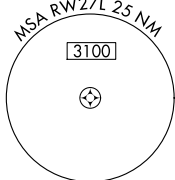
# RNAV (GPS) PRM RWY 27L (SIMULTANEOUS CLOSE PARALLEL) HARTSFIELD/JACKSON ATLANTA INTL (ATL)

WAAS CH <b>65700</b> <b>W27A</b>	APP CRS <b>275°</b>	Rwy Ldg <b>8865</b> TDZE <b>999</b> Apt Elev <b>1026</b>
--	------------------------	--

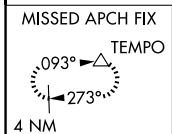
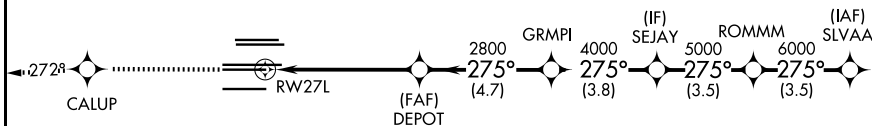
**▽** For uncompensated Baro-VNAV systems, LNAV/VNAV NA below -7°C (20°F) or above 54°C (130°F). DME/DME RNP-0.3 NA. Simultaneous close parallel approach authorized with ILS PRM and RNAV PRM Rwy 26R or 26L or 28, or Rwys 26R and 28, or Rwys 26L and 28. Dual VHF Comm required. Use of FD or AP providing RNAV track guidance required during simultaneous operations. See additional requirements on AAUP.

ALSF-2  
  
MISSED APPROACH: Climb to 4000 direct CALUP and on track 272° to TEMPO and hold.

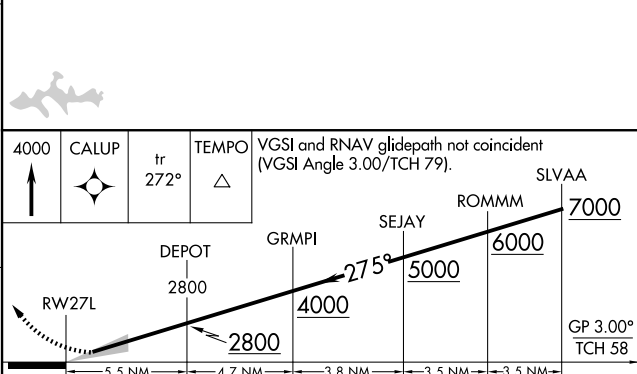
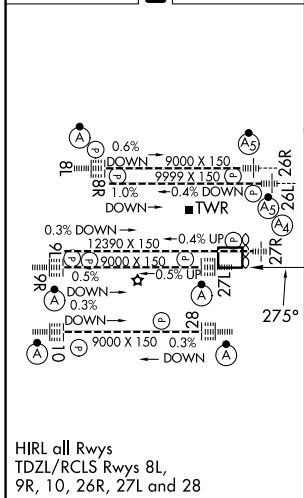
D-ATIS <b>119.65</b>	ATLANTA APP CON <b>127.9 379.9</b>	ATLANTA TOWER 8L-26R 8R-26L 9L-27R 9R-27L 10-28 RWYS <b>119.1 125.325 123.85 119.3 119.5 254.4</b> PRM <b>132.55</b>	ALL RWYS (8L-26R, 8R-26L) (9L-27R, 9R-27L) 10-28 <b>121.9 121.75 121.65 254.4</b>
-------------------------	---------------------------------------	---	---



**RADAR REQUIRED**



ELEV <b>1026</b>	<b>D</b>	TDZE <b>999</b>
------------------	----------	-----------------



CATEGORY	A	B	C	D
LPV DA		1199/18	200 (200-½)	
LNAV/VNAV DA		1528-1⅓	529 (600-1⅓)	

ATLANTA, GEORGIA  
Orig-A 12OC17

33°38'N-84°26'W

HARTSFIELD/JACKSON ATLANTA INTL (ATL)

## RNAV (GPS) PRM RWY 27L (SIMULTANEOUS CLOSE PARALLEL)

SE-4, 11 JUN 2026 to 09 JUL 2026

SE-4, 11 JUN 2026 to 09 JUL 2026