


RNAV (GPS) PRM RWY 9R (SIMULTANEOUS CLOSE PARALLEL) HARTSFIELD/JACKSON ATLANTA INTL (ATL)

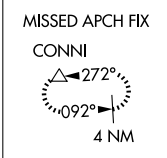
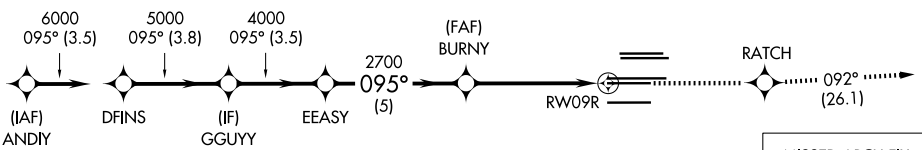
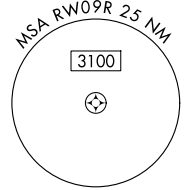
WAAS CH 97400 W09B	APP CRS 095°	Rwy Ldg 9000 TDZE 1026 Apt Elev 1026
--	------------------------	---

NA For uncompensated Baro-VNAV systems, LNAV/VNAV NA below -7°C (20°F) or above 54°C (130°F). DME/DME RNP-0.3 NA. Simultaneous close parallel approach authorized with ILS PRM and RNAV PRM Rwy 8L or 8R or 10, or Rwy 8L and 10, or Rwy 8R and 10. Dual VHF comm required. See additional requirements on AAUP. Use of FD or AP providing RNAV track guidance required during simultaneous operations.

ALS-F-2  **MISSED APPROACH:** Climb to 4000 direct RATCH and on track 092° to CONNI and hold.

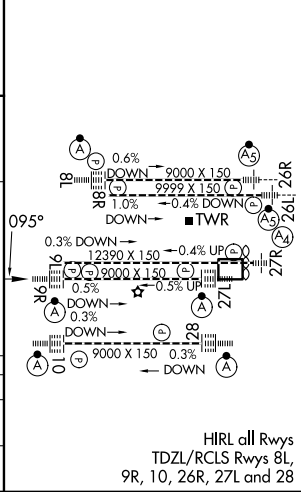
D-ATIS 119.65	ATLANTA APP CON 127.9 379.9	ATLANTA TOWER 8L-26R 8R-26L 9L-27R 9R-27L 10-28 RWYS 119.1 125.325 123.85 119.3 119.5 254.4 PRM 132.55	ALL RWYS (8L-26R,8R-26L) 121.9	GND CON (9L-27R,9R-27L) 10-28 RWYS 121.75 121.65 254.4
-------------------------	---------------------------------------	---	--	---

RADAR REQUIRED



ELEV	1026		TDZE	1026
------	------	---	------	------

VGSI and RNAV glidepath not coincident (VGSI Angle 3.00/TCH 70).		4000	RATCH	CONNI
ANDY	DFINS	GGUY	EEASY	BURNY
7000	6000	5000	4000	2700
GP 3.00°	TCH 56		RWY 09R	
CATEGORY	A	B	C	D
LPV	DA	1226/18	200 (200-½)	
LNAV/VNAV	DA	1403/40	377 (400-¾)	



RNAV (GPS) PRM RWY 9R (SIMULTANEOUS CLOSE PARALLEL)

SE-4, 11 JUN 2026 to 09 JUL 2026

SE-4, 11 JUN 2026 to 09 JUL 2026