

RNAV (RNP) Z RWY 8L HARTSFIELD/JACKSON ATLANTA INTL (ATL)

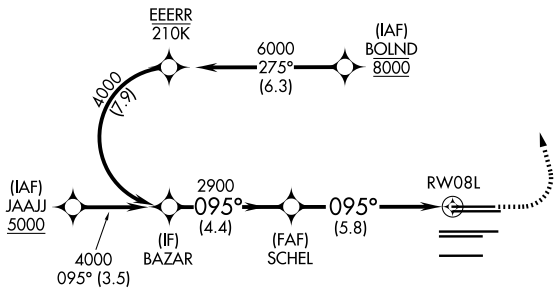
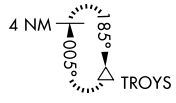
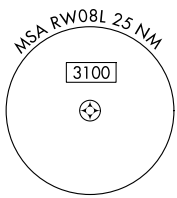
APP CRS	Rwy Ldg	8800
095°	TDZE	1015
	Apt Elev	1026

RNP AR APCH - GPS.

▼ For uncompensated Baro-VNAV systems, procedure NA below -5°C or above 54°C.
For inop ALS, increase RNP 0.15 all Cats RVR to 5500. Simultaneous approach authorized. Arrival from BOLND NA during simultaneous triple approaches.

ALS-2
MISSED APPROACH: Climb to 1500 then dimbing left turn to 3500 direct TROYS and hold.

D-ATIS	ATLANTA APP CON	ATLANTA TOWER					ALL RWYS	GND CON	ALL RWYS
119.65	127.9 379.9	8L-26R	8R-26L	9L-27R	9R-27L	10-28	(8L-26R,8R-26L)	(9L-27R,9R-27L)	10-28
		119.1	125.325	123.85	119.3	119.5	254.4	121.9	121.75 121.65 254.4



ELEV 1026	D	TDZE 1015
-----------	----------	-----------

VGSI and RNAV glidepath not coincident (VGSI Angle 3.00/TCH 70).

GP 3.00° TCH 50

BAZAR 4000

SCHEL 2900

RW08L

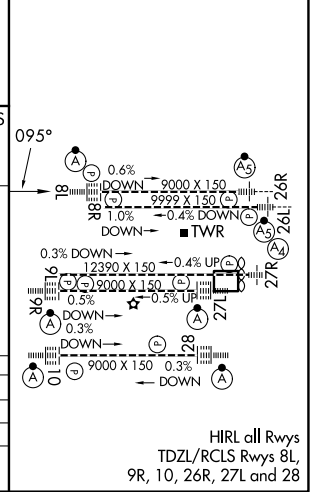
1500 3500 TROYS

095°

4.4 NM 5.8 NM

CATEGORY	A	B	C	D
RNP 0.15 DA		1380/35	365 (400-%)	
RNP 0.30 DA		1458/45	443 (500-%)	

AUTHORIZATION REQUIRED



HIRL all Rwys
TDZL/RCLS Rwy 8L,
9R, 10, 26R, 27L and 28

SE-4, 11 JUN 2026 to 09 JUL 2026

SE-4, 11 JUN 2026 to 09 JUL 2026