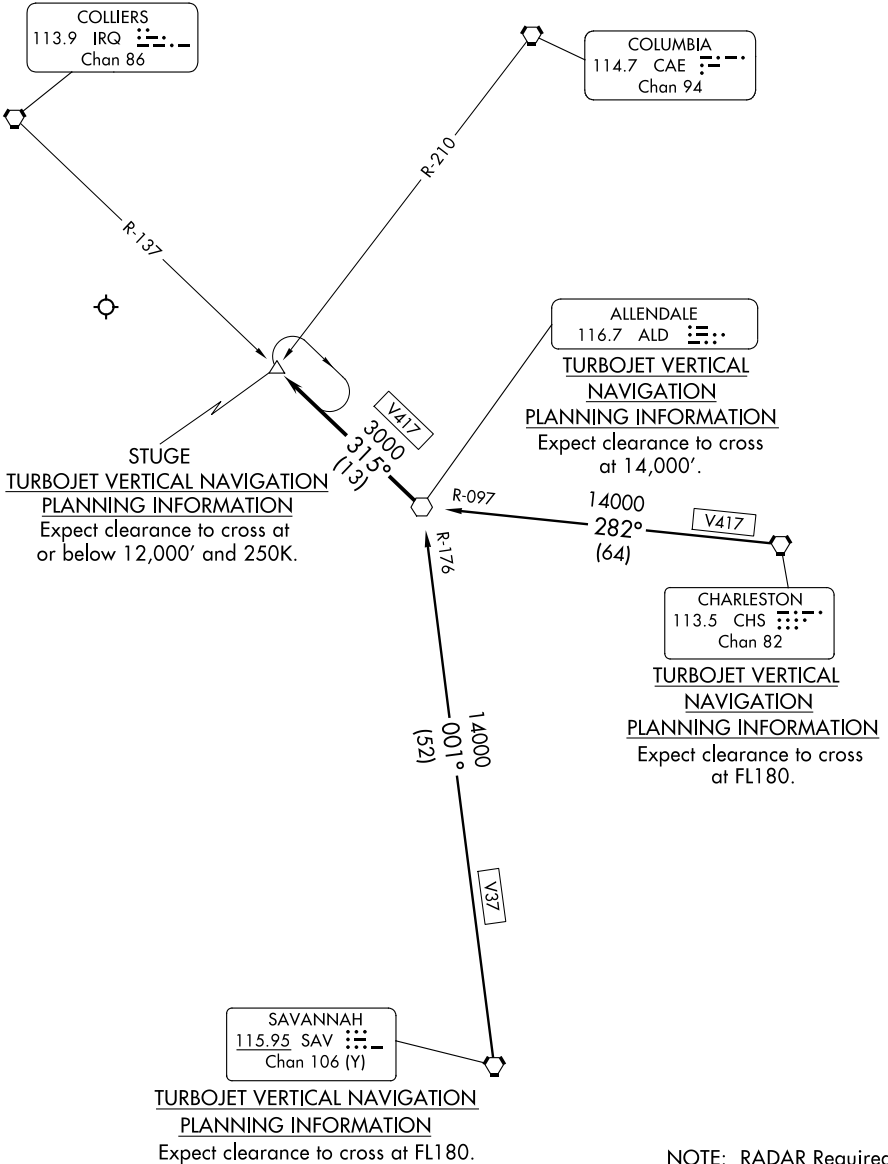


# STUGE THREE ARRIVAL

AUGUSTA APP CON ★  
119.15 284.625  
ATIS  
132.75



NOTE: RADAR Required.  
NOTE: Chart not to scale.

(CONTINUED ON FOLLOWING PAGE)

SE-4, 11 JUN 2026 to 09 JUL 2026

SE-4, 11 JUN 2026 to 09 JUL 2026

# STUGE THREE ARRIVAL

## ARRIVAL DESCRIPTION

CHARLESTON TRANSITION (CHS.STUGE3): From over CHS VORTAC via CHS R-282 and ALD R-097 to ALD VOR. Thence. . . .

SAVANNAH TRANSITION (SAV.STUGE3): From over SAV VORTAC via SAV R-001 and ALD R-176 to ALD VOR. Thence. . . .

. . . .from over ALD VOR via ALD R-315 to STUGE INT, MEA 3000. Expect RADAR vectors to final approach course.

SE-4, 11 JUN 2026 to 09 JUL 2026

SE-4, 11 JUN 2026 to 09 JUL 2026