

WAAS CH 72927 W36A	APP CRS 359°	Rwy Ldg TDZE Apt Elev	4850 59 61
--	------------------------	-----------------------------	---------------------------------------

RNAV (GPS) RWY 36

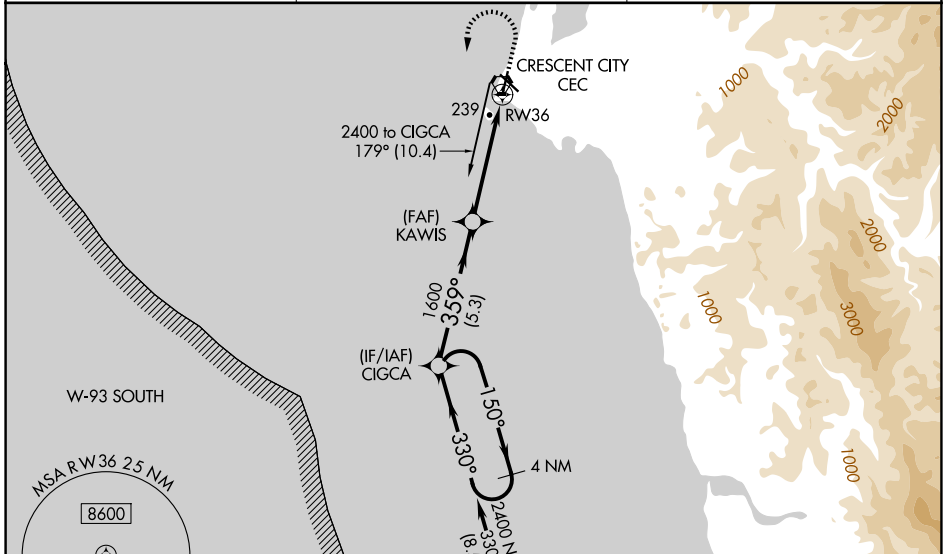
JACK MC NAMARA FLD (CEC)

RNP APCH.

Baro-VNAV NA when using Brookings altimeter setting. For uncompensated Baro-VNAV systems, LNAV/VNAV NA below -15°C or above 54°C. When local altimeter setting not received, use Brookings altimeter setting and increase LPV DA to 406 and LNAV/VNAV DA to 505 and all MDA 100 feet; increase LPV all Cats and LNAV Cat C/D and Circling Cat D visibilities 1/4 SM, increase LNAV/VNAV all Cats visibility 3/8 SM, and Circling Cat C visibility 1/2 SM. Rwy 36 helicopter visibility reduction below 1 SM NA. Straight-In Rwy 36 at night, operational VGSI required, remain on or above VGSI glidepath until threshold. Circling Rwy 18, 30 NA at night.

MISSED APPROACH: Climb to 1300 then climbing left turn to 2400 direct CIGCA and hold.

ASOS 119.925	SEATTLE CENTER 124.85 306.3	UNICOM 122.8 (CTAF) 0
------------------------	---------------------------------------	---------------------------------



ELEV 61	TDZE 59
HIRL Rwy 12-30	
REIL Rwy 18, 30 and 36	
MIRL Rwy 18-36	

CATEGORY	A	B	C	D
LPV DA		309-1	250 (300-1)	
LNAV/VNAV DA		408-1 1/8	349 (400-1 1/8)	
LNAV MDA	500-1	441 (500-1)	500-1 3/8	441 (500-1 3/8)
CIRCLING	540-1	479 (500-1)	640-1 1/2 579 (600-1 1/2)	640-2 579 (600-2)

