

VORTAC CEC	APP CRS	Rwy Ldg	<b>5002</b>
<b>109.0</b>	<b>131°</b>	TDZE	<b>60</b>
Chan <b>27</b>		Apt Elev	<b>61</b>

# VOR/DME RWY 12

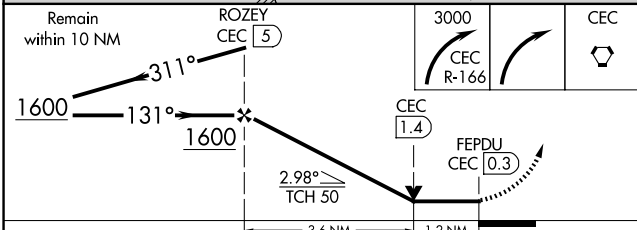
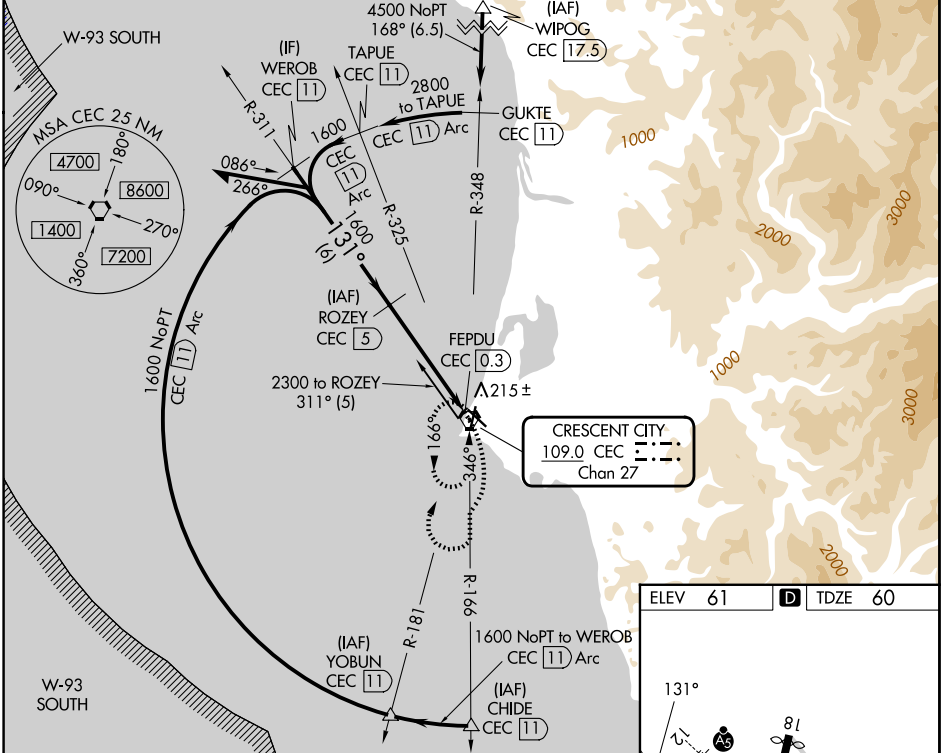
JACK MC NAMARA FLD (CEC)

**⚠** VDP NA with Brookings altimeter setting. When local altimeter setting not received, use Brookings altimeter setting and increase all MDA 100 feet; increase S-12 Cat C/D, and Circling Cat D visibility ¼ mile, and Circling Cat C visibility ½ mile. For inop MALSRS, increase S-12 Cats A/B visibility to 1 mile, Cats C/D visibility to 1½ mile. For inop MALSRS when using Brookings altimeter setting, increase S-12 Cats A/B visibility to 1 mile, Cats C/D visibility to 1½ mile. Night Landing: Rwy 18, 30 NA. Night Landing: Rwy 36 operational VGSJ required, remain on or above VGSJ glidepath until threshold.

**MALSRS**

**MISSED APPROACH:**  
Climbing right turn to 3000 on CEC VORTAC R-166 then right turn direct CEC VORTAC and hold.

ASOS <b>119.925</b>	SEATTLE CENTER <b>124.85 306.3</b>	UNICOM <b>122.8 (CTAF) 0</b>
------------------------	---------------------------------------	---------------------------------



ELEV 61	<b>D</b> TDZE 60
---------	------------------

HIRL Rwy 12-30 **0**  
REIL Rwys 18, 30 and 36 **0**  
MIRL Rwy 18-36 **0**

CATEGORY	A	B	C	D
S-12	480-¾	420 (500-¾)	480-1	420 (500-1)
CIRCLING	540-1	479 (500-1)	640-1½ 579 (600-1½)	640-2 579 (600-2)

SW-2, 11 JUN 2026 to 09 JUL 2026

SW-2, 11 JUN 2026 to 09 JUL 2026