

WAAS CH <b>82440</b> <b>W30B</b>	APP CRS <b>301°</b>	Rwy Ldg TDZE <b>484</b> Apt Elev <b>510</b>
--	------------------------	--

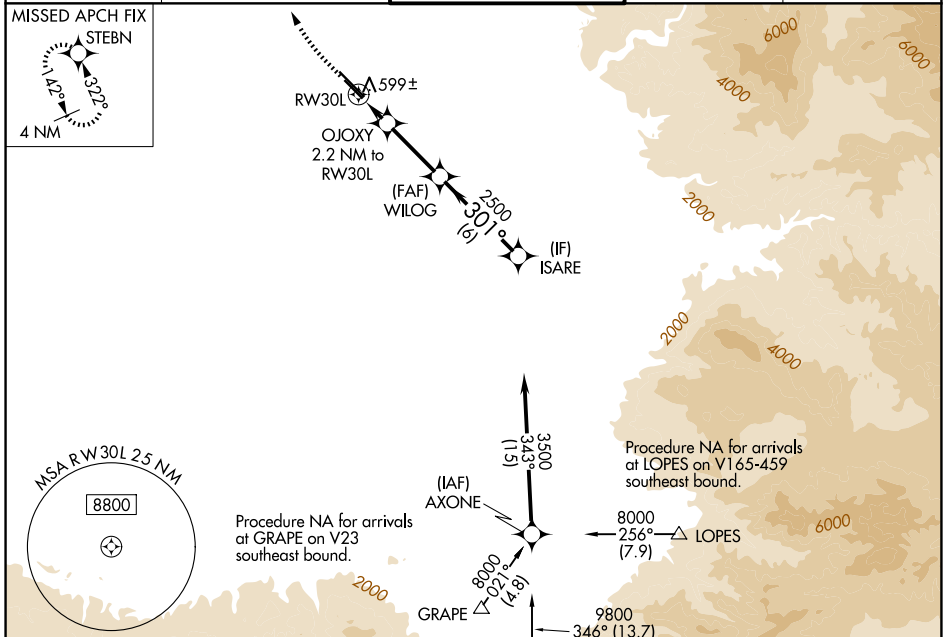
# RNAV (GPS) RWY 30L

MEADOWS FLD (BFL)

For uncompensated Baro-VNAV systems, LNAV/VNAV NA below -1°C (31°F) or above 54°C (130°F). Circling NA northeast of Rwy 12L-30R. DME/DME RNP-0.3 NA.

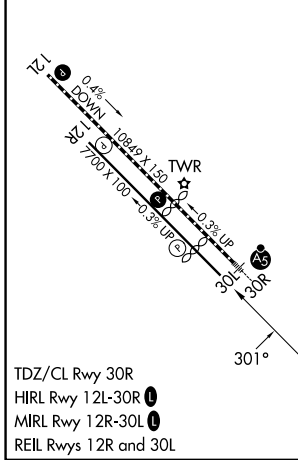
MISSED APPROACH: Climb to 1000 then climbing right turn to 3000 direct STEBN and hold.

ATIS <b>118.6</b>	BAKERSFIELD APP CON * <b>118.9 270.3 (N)</b> <b>118.8 284.625 (S)</b>	BAKERSFIELD TOWER * <b>118.1 (CTAF)</b> <b>257.8</b>	GND CON <b>121.7</b>	UNICOM <b>122.95</b>
----------------------	---	---	-------------------------	-------------------------



ELEV <b>510</b>	<b>D</b>	TDZE <b>484</b>
-----------------	----------	-----------------

Procedure NA for arrival at GMN VORTAC airway radials 297 CW 328.



1000	3000	STEBN	VGS1 and RNAV glidepath not coincident (VGS1 Angle 3.00/TCH 25).	ISARE
*LNAV only	OJOXY 2.2 NM to RWY 30L	WILOG		3500
	*1.1 NM to RWY 30L	2500		GP 3.00° TCH 50
	1.1 NM	1.1 NM	4 NM	6 NM

CATEGORY	A	B	C	D
LPV DA		734-7/8	250 (300-7/8)	
LNAV/VNAV DA		797-1/8	313 (300-1/8)	
LNAV MDA		860-1	376 (400-1)	
CIRCLING	960-1	450 (500-1)	960-1/2 450 (500-1/2)	1060-2 550 (600-2)