

WAAS CH 58118 W30A	APP CRS 301°	Rwy Ldg 7430 TDZE 493 Apt Elev 510
--	------------------------	---

RNAV (GPS) RWY 30R

MEADOWS FLD (BFL)

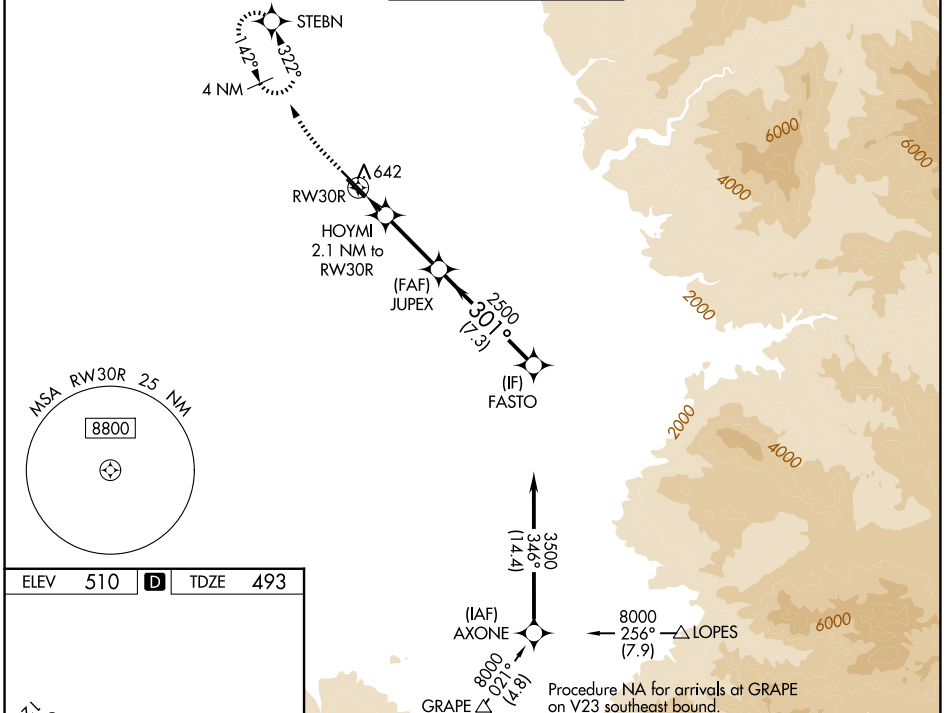
RNP APCH

⚠ For uncompensated Baro-VNAV systems, LNAV/VNAV NA below 0°C (32°F) or above 54°C (130°F). Circling NA northeast of Rwy 12L-30R. When local altimeter setting not received, use Porterville altimeter setting: increase LPV DA to 790, LNAV/VNAV DA to 990. Increase LNAV/VNAV all Cats visibilities to 1 1/4 mile; increase all MDA 100 feet and LNAV visibility Cats C and D to RVR 5000. VDP and Baro-VNAV NA when using Porterville altimeter setting. For inop ALS when using Porterville altimeter setting, increase LPV all Cats visibility to RVR 5000 and LNAV Cat C and D visibility to 1/2. # RVR 2400 when using Porterville altimeter setting.

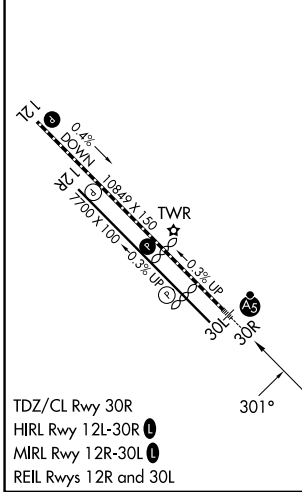


MISSED APPROACH:
Climb to 1000 then climbing right turn to 3000 direct STEBN and hold.

ATIS 118.6	BAKERSFIELD APP CON * 118.9 270.3 (N) 118.8 284.625 (S)	BAKERSFIELD TOWER * 118.1 (CTAF) 257.8	GND CON 121.7	UNICOM 122.95
----------------------	---	--	-------------------------	-------------------------



ELEV 510	D	TDZE 493
-----------------	----------	-----------------



TDZ/CL Rwy 30R
HIRL Rwy 12L-30R
MIRL Rwy 12R-30L
REIL Rwy 12R and 30L

1000	3000	STEBN	FASTO	
*LNAV only	*1.1 NM to RW30R	HOYMI 2.1 NM to RW30R	JUPEX 2500	
			FASTO 3500	
			GP 3.00° TCH 51	
			2500	
			301°	
			1200*	
			1.1 NM	
			1 NM	
			4.1 NM	
			7.3 NM	
CATEGORY	A	B	C	D
LPV DA#	698/18 205 (200-1/2)			
LNAV/VNAV DA	898/45 405 (400-3/4)			
LNAV MDA	880/24	387 (400-1/2)	880/35	387 (400-3/4)
CIRCLING	960-1	450 (500-1)	960-1 1/2 450 (500-1 1/2)	1060-2 550 (600-2)

SW-3, 11 JUN 2026 to 09 JUL 2026

SW-3, 11 JUN 2026 to 09 JUL 2026