


| | | | |
|---------------------------|------------------------|---------------------------------|------------------------|
| LOC I-BUR 109.5 | APP CRS 079° | Rwy Ldg TDZE 5801 727 | Apt Elev 778 |
|---------------------------|------------------------|---------------------------------|------------------------|

ILS Z or LOC Z RWY 8

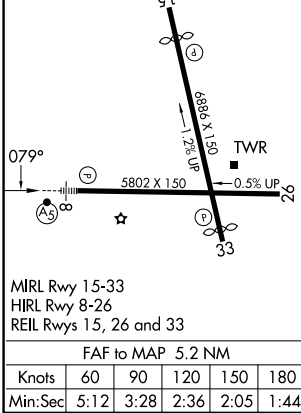
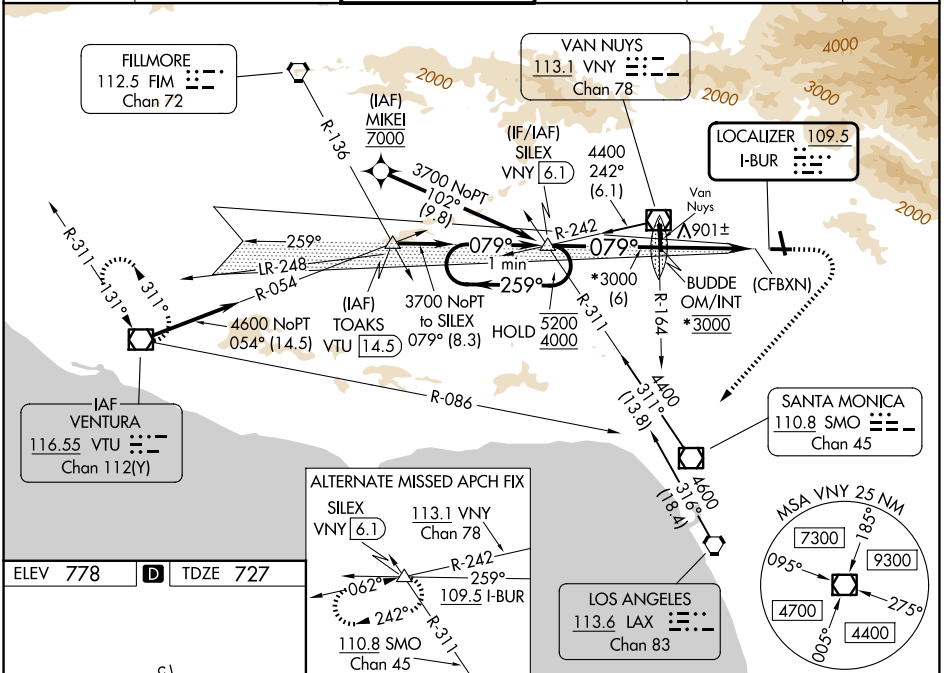
BOB HOPE (BUR)

From MIKEI: RNAV 1-GPS required.

⚠ Localizer unusable within 0.9 NM to thld. Straight-in Rwy 8 at night, Circling to Rwy 33 at night, operational VGSJ required, remain on or above VGSJ glidepath until threshold. Circling Rwy 26 NA at night and Circling Rwy 33 NA at night for Cat D. Circling NA for Cats A/B/C northeast of Rwy 15 and 26. Circling NA for Cat D east of Rwy 15-33. Inop table does not apply to S-ILS 8. For inop ALS, increase S-LOC 8 Cats A/B visibility to RVR 6000 and S-LOC 8 Cats C/D visibility to 1/4 SM. Rwy 8 helicopter visibility reduction below RVR 5000 NA.

MALSRL

 MISSED APPROACH: Climb to 1300 then climbing right turn to 4600 on heading 210° and VTU VOR/DME R-086 to VTU VOR/DME and hold. #MISSED approach requires a minimum climb of 340 feet per NM to 2520 (if unable to meet climb gradient, see ILS Y or LOC Y RWY 8).

| | | | | | |
|------------------------|--|-------------------------------------|-------------------------------|--------------------------------|-------|
| D-ATIS 134.5 | SOCAL APP CON 120.4 360.6 (NORTH) 134.2 338.2 (WEST) | BURBANK TOWER 118.7 254.3 | GND CON 123.9 348.6 | CLNC DEL 118.0 348.6 | CPDLC |
|------------------------|--|-------------------------------------|-------------------------------|--------------------------------|-------|



BURBANK, CALIFORNIA
 MIRL Rwy 15-33
 HIRL Rwy 8-26
 REIL Rwy 15, 26 and 33
 FAF to MAP 5.2 NM
 Knots: 60 90 120 150 180
 Min:Sec: 5:12 3:28 2:36 2:05 1:44

34°12'N-118°22'W

ILS Z or LOC Z RWY 8

BOB HOPE (BUR)

SW-3, 11 JUN 2026 to 09 JUL 2026

SW-3, 11 JUN 2026 to 09 JUL 2026