


VOR/DME VNY	APP CRS	Rwy Ldg	5801
113.1	089°	TDZE	727
Chan 78		Apt Elev	778

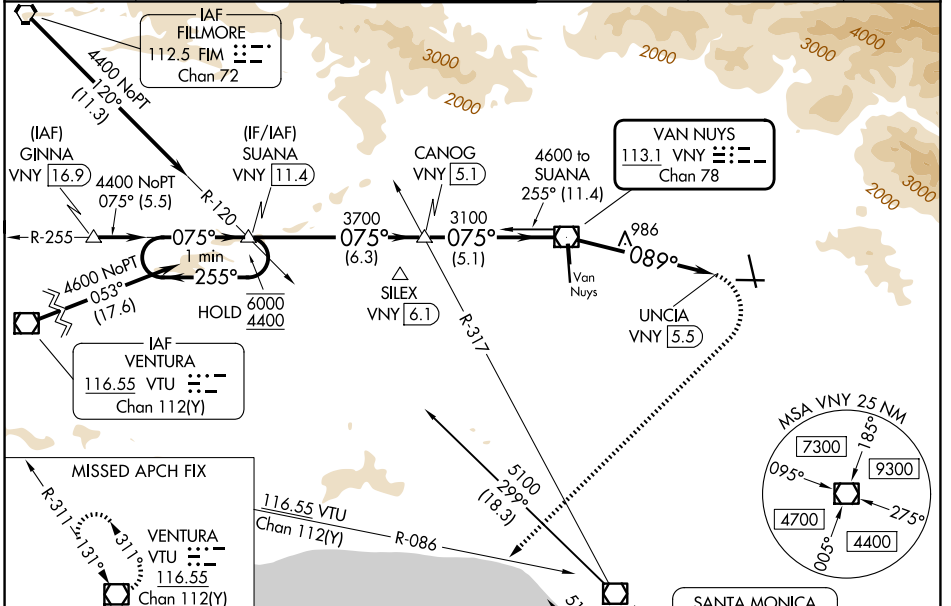
VOR RWY 8

BOB HOPE (BUR)

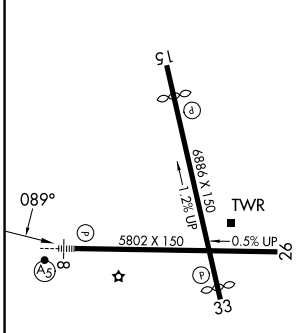
⚠ Straight-in Rwy 8 at night, Circling to Rwy 33 at night, operational VGSI required, remain on or above VGSI glidepath until threshold. Circling Rwy 26 NA at night and Circling Rwy 33 NA at night for Cat D. Circling NA for Cats A/B/C northeast of Rwy 15 and 26. Circling NA for Cat D east of Rwy 15-33. Inop table does not apply. Rwy 8 helicopter visibility reduction below RVR 5000 NA.

MALSR  MISSED APPROACH: Climbing right turn to 4600 on heading 210° and VTU VOR/DME R-086 to VTU VOR/DME and hold.

D-ATIS	SOCAL APP CON	BURBANK TOWER	GND CON	CLNC DEL	CPDLC
134.5	120.4 360.6 (NORTH) 134.2 338.2 (WEST)	118.7 254.3	123.9 348.6	118.0 348.6	



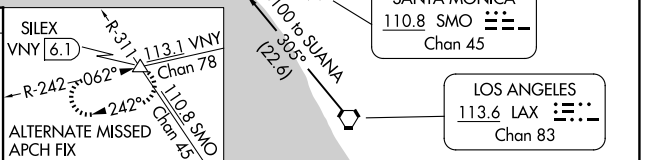
ELEV 778	D	TDZE 727
----------	----------	----------



MIRL Rwy 15-33
HIRL Rwy 8-26
REIL Rwys 15, 26 and 33

FAF to MAP 5.5 NM

Knots	60	90	120	150	180
Min:Sec	5:30	3:40	2:45	2:12	1:50



One Minute Holding Pattern	SUANA INT VNY 11.4	CANOG INT VNY 5.1	VNY VOR/DME	UNCIA VNY 5.5
6000 ← 255°	3700 → 075°	3100 → 089°	3.46% TCH 60	
4400				
	6.3 NM	5.1 NM	5.5 NM	0.8 NM

CATEGORY	A	B	C	D
S-8	1600/55 873 (900-1)	1600-1¼ 873 (900-1¼)	1600-2½ 873 (900-2½)	
CIRCLING	1600-1¼ 822 (900-1¼)	1640-1¼ 862 (900-1¼)	2240-3 1462 (1500-3)	2320-3 1542 (1600-3)

SW-3, 11 JUN 2026 to 09 JUL 2026

SW-3, 11 JUN 2026 to 09 JUL 2026