

# BEAVY SEVEN DEPARTURE (RNAV)

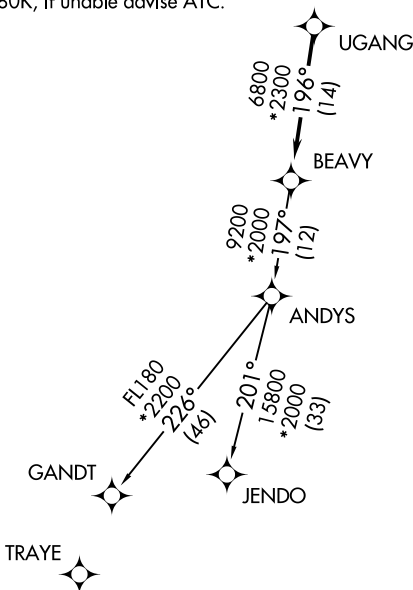
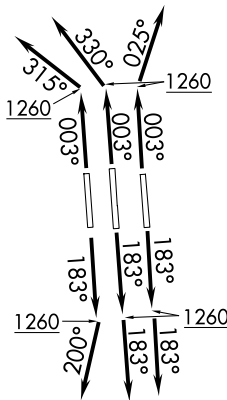
CHARLOTTE DEP CON  
120.5 257.2 (1L, 36C)  
124.0 307.8 (18L/C, 19R, 36R)  
D-ATIS DEP  
132.1  
CLNC DEL  
127.15 348.6  
CPDLC  
GND CON  
121.8 348.6 (W)  
121.9 348.6 (E)  
CHARLOTTE TOWER  
118.1 257.8 (18L-36R)  
126.4 257.8 (18C-36C)  
133.35 257.8 (1L-19R)

RNAV 1 - DME/DME/IRU or GPS.

RADAR required.

**TOP ALTITUDE:  
8000**

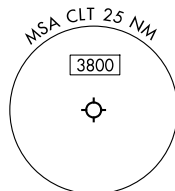
- NOTE: Turbojet only.
- NOTE: If unable to accept climb rates, advise ATC on initial contact.
- NOTE: Transponder code will be issued via PDC or Charlotte CLNC DEL.
- NOTE: Accelerate to 250K, if unable advise ATC. Upon reaching 10000 MSL, accelerate to and maintain 280K, if unable advise ATC.



### TAKEOFF MINIMUMS

Rwys 18L/C, 19R, 36C/R: Standard with minimum climb of 500'/NM to 1260.

Rwy 1L: Standard with minimum climb of 500'/NM to 1400.



NOTE: Chart not to scale.

(CONTINUED ON FOLLOWING PAGE)

# BEAVY SEVEN DEPARTURE (RNAV)

(BEAVY7.BEAVY) 14MAY26

CHARLOTTE, NORTH CAROLINA  
CHARLOTTE/DOUGLAS INTL (CLT)

SE-2, 11 JUN 2026 to 09 JUL 2026

SE-2, 11 JUN 2026 to 09 JUL 2026

# BEAVY SEVEN DEPARTURE (RNAV)



## DEPARTURE ROUTE DESCRIPTION SEE ADDITIONAL REQUIREMENTS ON AAUP

- TAKEOFF RUNWAY 1L: Climb on heading 003° to 1260, then on heading 315° or as assigned by ATC for RADAR vectors to UGANG, thence. . .
- TAKEOFF RUNWAYS 18L/C: Climb on heading 183° to 1260, then on heading 183° or as assigned by ATC for RADAR vectors to UGANG, thence. . .
- TAKEOFF RUNWAY 19R: Climb on heading 183° to 1260, then on heading 200° or as assigned by ATC for RADAR vectors to UGANG, thence. . .
- TAKEOFF RUNWAY 36C: Climb on heading 003° to 1260, then on heading 330° or as assigned by ATC for RADAR vectors to UGANG, thence. . .
- TAKEOFF RUNWAY 36R: Climb on heading 003° to 1260, then on heading 025° or as assigned by ATC for RADAR vectors to UGANG, thence. . .

. . .on depicted route to BEAVY, then on assigned transition. Maintain 8000. Expect filed altitude 10 minutes after departure.

- GANDT TRANSITION (BEAVY7.GANDT)
- JENDO TRANSITION (BEAVY7.JENDO)

SE-2, 11 JUN 2026 to 09 JUL 2026

SE-2, 11 JUN 2026 to 09 JUL 2026

# BEAVY SEVEN DEPARTURE (RNAV)