

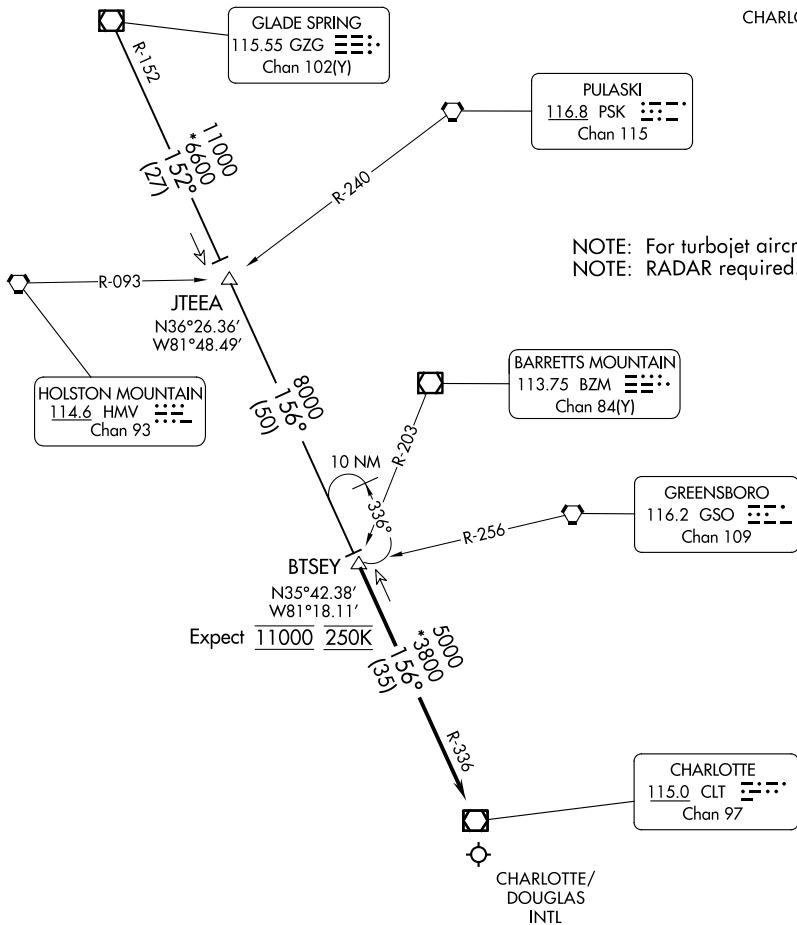
(BTSEY.BTSEY2) 24081

# BTSEY TWO ARRIVAL

AL-78 (FAA)

CHARLOTTE/DOUGLAS INTL (CLT)  
CHARLOTTE, NORTH CAROLINA

CHARLOTTE APP CON  
125.35 257.2  
D-ATIS ARR  
121.15



NOTE: For turbojet aircraft only.  
NOTE: RADAR required.

NOTE: Chart not to scale.

## ARRIVAL ROUTE DESCRIPTION

GLADE SPRINGS TRANSITION (GZG.BTSEY2): From over GZG VOR/DME on GZG R-152 to JTEEA, then on CLT R-336 to BTSEY. Thence . . . .

. . . . from BTSEY on CLT R-336 to CLT VOR/DME. Expect RADAR vectors to final approach course prior to CLT VOR/DME.

# BTSEY TWO ARRIVAL

(BTSEY.BTSEY2) 31MAR16

CHARLOTTE, NORTH CAROLINA  
CHARLOTTE/DOUGLAS INTL (CLT)

SE-2, 11 JUN 2026 to 09 JUL 2026

SE-2, 11 JUN 2026 to 09 JUL 2026