

# CHARLOTTE FOUR DEPARTURE

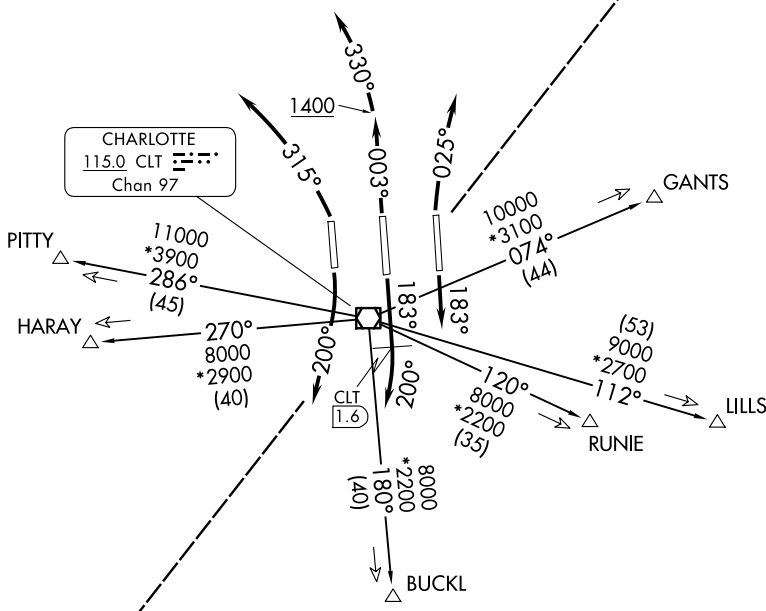
D-ATIS DEP  
132.1  
CLNC DEL  
127.15 348.6  
CPDLC  
GND CON  
121.8 348.6 (W)  
121.9 348.6 (E)  
CHARLOTTE TOWER  
118.1 257.8 (18L-36R)  
126.4 257.8 (18C-36C)  
133.35 257.8 (1L-19R)

RADAR and DME required.

**TOP ALTITUDE:  
8000**

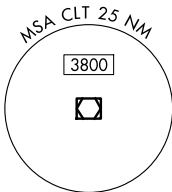
NOTE: Turbojets only requesting at or below 10000' only.  
NOTE: Accelerate to 250K, if unable, advise ATC.  
NOTE: Transponder code will be issued via PDC or Charlotte Clearance Delivery.  
NOTE: If unable to accept climb rate, advise ATC on initial contact.

CHARLOTTE DEP CON  
120.5 257.2 (HARAY, PITY)  
Transition. 1L, 36C



CHARLOTTE DEP CON  
124.0 307.8 (BUCKL, GANTS, LILLS,  
RUNIE Transition. 18L/C, 19R, 36R)

**TAKEOFF MINIMUMS:**  
Rwys 18L/C, 19R, 36C/R: Standard.  
Rwy 1L: Standard with minimum climb of 231'/NM to 3600.



NOTE: Chart not to scale.

(CONTINUED ON FOLLOWING PAGE)

SE-2, 11 JUN 2026 to 09 JUL 2026

SE-2, 11 JUN 2026 to 09 JUL 2026

# CHARLOTTE FOUR DEPARTURE



## DEPARTURE ROUTE DESCRIPTION

TAKEOFF RUNWAY 1L: Climbing left turn heading 315°, thence. . .

TAKEOFF RUNWAY 18L: Climb on heading 183°, thence. . .

TAKEOFF RUNWAY 18C: Climb on heading 183° until passing CLT VOR/DME 1.6 DME, then turn right heading 200°, thence. . .

TAKEOFF RUNWAY 19R: Climbing right turn heading 200°, thence. . .

TAKEOFF RUNWAY 36C: Climb on heading 003° to 1400 then left turn heading 330°, thence. . .

TAKEOFF RUNWAY 36R: Climbing right turn heading 025°, thence. . .

. . .on RADAR vectors to intercept filed/assigned transition or enroute fix/navaid.  
Maintain 8000. Expect filed altitude 10 minutes after departure.

BUCKL TRANSITION (CLT4.BUCKL): From over CLT VOR/DME to BUCKL.

GANTS TRANSITION (CLT4.GANTS): From over CLT VOR/DME to GANTS.

HARAY TRANSITION (CLT4.HARAY): From over CLT VOR/DME to HARAY.

LILLS TRANSITION (CLT4.LILLS): From over CLT VOR/DME to LILLS.

PITTY TRANSITION (CLT4.PITTY): From over CLT VOR/DME to PITTY.

RUNIE TRANSITION (CLT4.RUNIE): From over CLT VOR/DME to RUNIE.

SE-2, 11 JUN 2026 to 09 JUL 2026

SE-2, 11 JUN 2026 to 09 JUL 2026