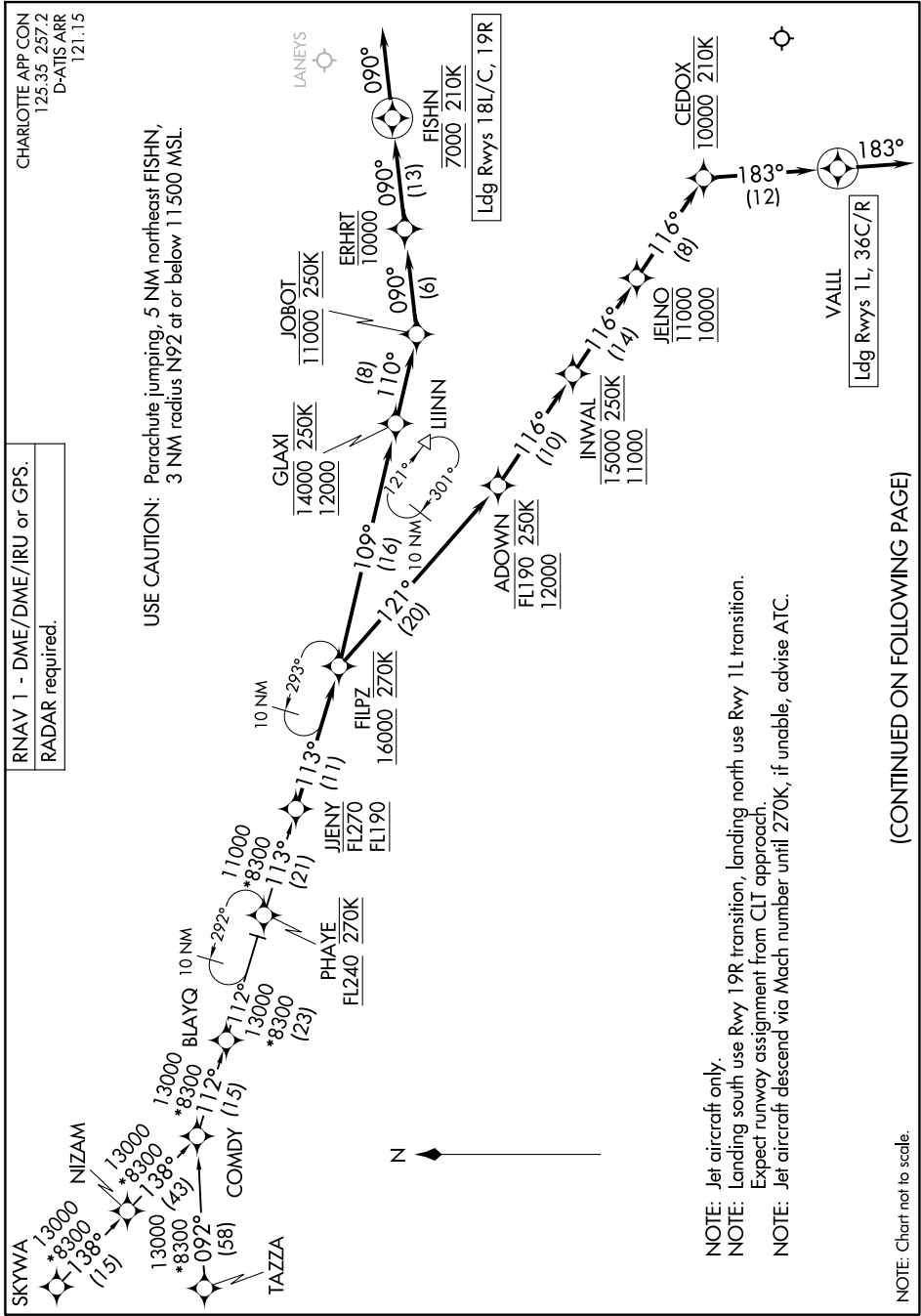


FILPZ FIVE ARRIVAL (RNAV)



FILPZ FIVE ARRIVAL (RNAV)

(CONTINUED ON FOLLOWING PAGE)

FILPZ FIVE ARRIVAL (RNAV)

ARRIVAL ROUTE DESCRIPTION

COMDY TRANSITION (COMDY.FILPZ5)

SKYWA TRANSITION (SKYWA.FILPZ5)

TAZZA TRANSITION (TAZZA.FILPZ5)

From JJENY on track 113° to cross FILPZ at or above 16000 and at 270K.

LANDING RUNWAYS 1L, 36C/R: From FILPZ on track 121° to cross ADOWN between 12000 and FL190 and at 250K, then on track 116° to cross INWAL between 11000 and 15000 and at 250K, then on track 116° to cross JELNO between 10000 and 11000, then on track 116° to cross CEDOX at 10000 and at 210K, then on track 183° to VALL, then on track 183°. Expect RADAR vectors to final approach course.

LANDING RUNWAYS 18L/C, 19R: From FILPZ on track 109° to cross GLAXI between 12000 and 14000 and at 250K, then on track 110° to cross JOBOT at 11000 and at 250K, then on track 090° to cross ERHRT at or below 10000, then on track 090° to cross FISHN at 7000 and at 210K, then on track 090°. Expect RADAR vectors to final approach course.

SE-2, 11 JUN 2026 to 09 JUL 2026

SE-2, 11 JUN 2026 to 09 JUL 2026