

LOC I-DQG	APP CRS	Rwy Ldg	10000
111.7	003°	TDZE	707
		Apt Elev	748

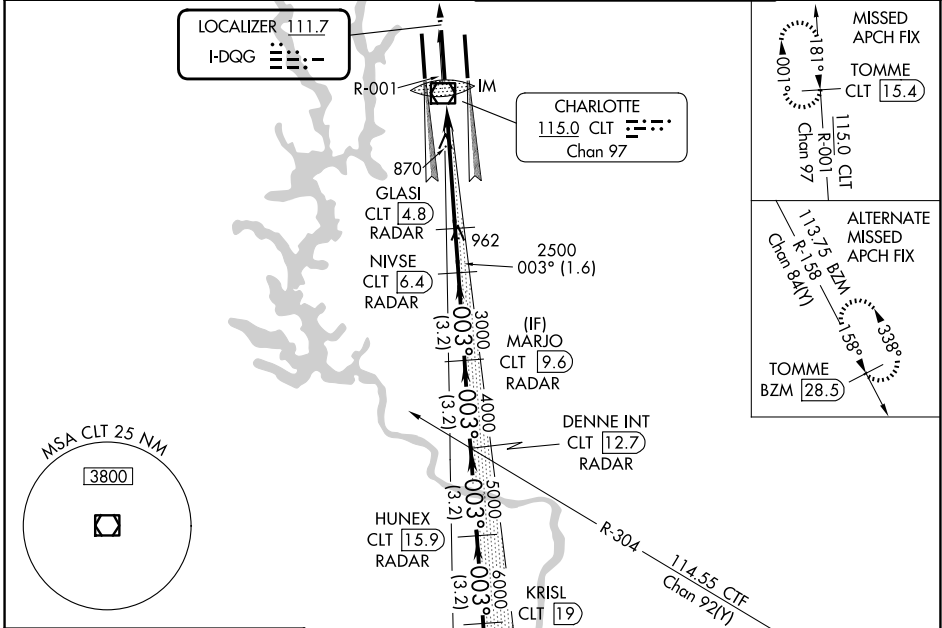
ILS RWY 36C (CAT II & III)

CHARLOTTE/DOUGLAS INTL (CLT)

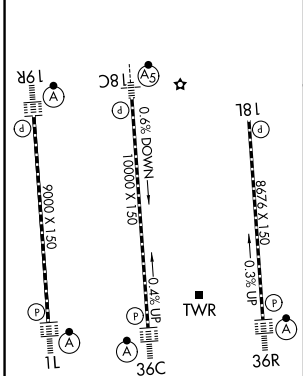
RADAR required for procedure entry. DME or RADAR required.
 Simultaneous approach authorized.
 DQG ILS LLZ Rwy 36C unusable for rollout guidance.

ALSF-2
 MISSED APPROACH: Climb to 3000 on CLT VOR/DME R-001 to TOMME/CLT 15.4 DME and hold.

D-ATIS	CHARLOTTE APP CON	CHARLOTTE TOWER	GND CON
121.15	128.325 (001°-119°) 257.2 (180°-359°)	118.1 257.8 (18L-36R)	121.8 348.6 (W)
	120.05 (120°-295°) 307.8 (360°-179°)	126.4 257.8 (18C-36C)	121.9 348.6 (E)
	134.75 (296°-360°)	133.35 257.8 (1L-19R)	



ELEV 748	D	TDZE 707
----------	----------	----------



3000	CLT R-001	TOMME CLT 15.4	VGSI and ILS glidepath not coincident (VGSI Angle 3.00/TCH 72).		SOLMN CLT 22.2 RADAR
			DENNE INT CLT 12.7 RADAR	HUNEX CLT 15.9 RADAR	KRISL CLT 19 RADAR
			GLASI CLT 4.8 RADAR	MARJO CLT 9.6 RADAR	NIVSE CLT 6.4 RADAR
			IM 2500 RADAR	3000	4000
			2500	5000	6000
			809	7000	8000
			3.2 NM	3.2 NM	3.2 NM
			1.6 NM	1.6 NM	1.6 NM
			0.8 NM	0.8 NM	0.8 NM
			0.4 NM	0.4 NM	0.4 NM
			0.2 NM	0.2 NM	0.2 NM
			0.1 NM	0.1 NM	0.1 NM

CATEGORY	A	B	C	D
S-ILS 36C	CAT II RA 126/12 100 DA 807			
S-ILS 36C	CAT IIIa RVR 07			
S-ILS 36C	CAT IIIb RVR 07			
S-ILS 36C	CAT IIIc NA			

CATEGORY II & III ILS - SPECIAL AIRCREW & AIRCRAFT CERTIFICATION REQUIRED

HIRL all Rwys
 REIL Rwy 18L
 TDZL/RCLS Rwys 1L, 19R, 36C and 36R