

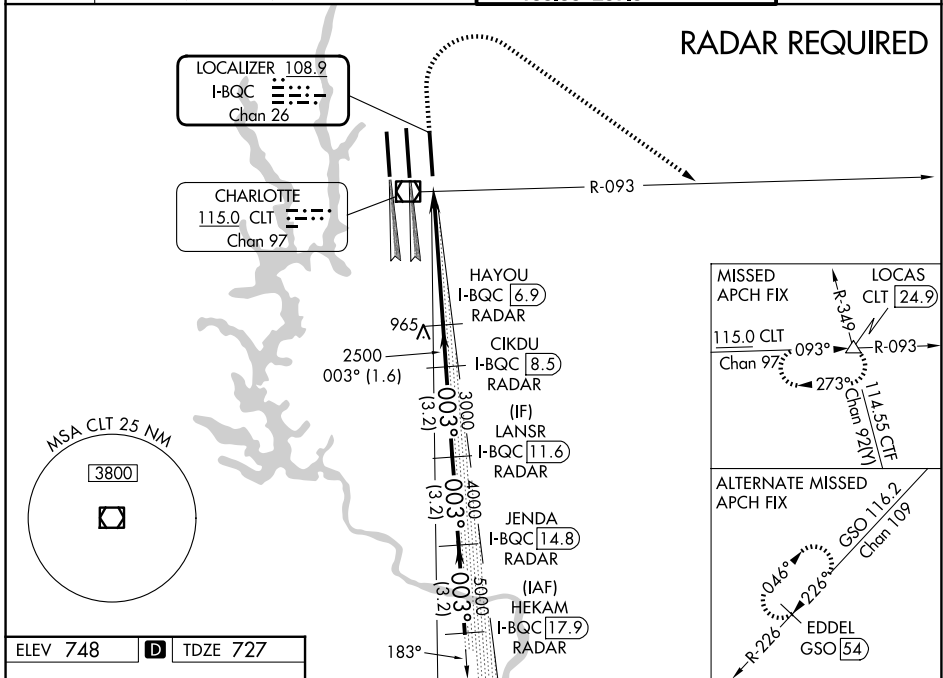
LOC/DME I-BQC 108.9 Chan 26	APP CRS 003°	Rwy Ldg TDZE Apt Elev	8390 727 748
--	------------------------	-----------------------------	---

ILS RWY 36R (CAT II & III)

CHARLOTTE/DOUGLAS INTL (CLT)

	ALSF-2	MISSED APPROACH: Climb to 1320 then climbing right turn to 4000 on CLT VOR/DME R-093 to LOCAS INT/24.9 DME and hold.

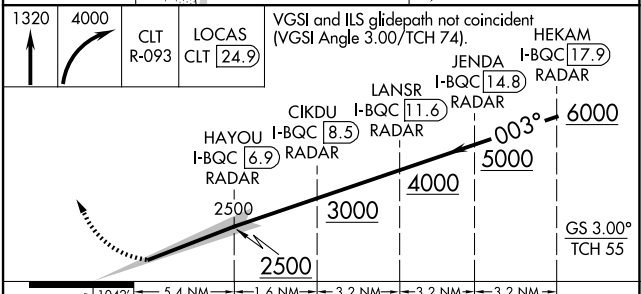
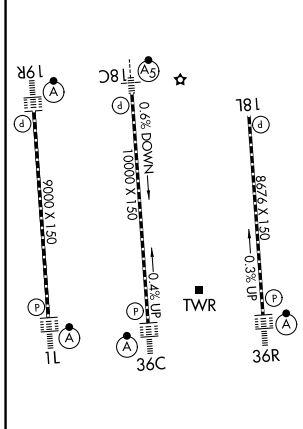
D-ATIS	CHARLOTTE APP CON		CHARLOTTE TOWER		GND CON
121.15	128.325 (001°-119°)	257.2 (180°-359°)	118.1	257.8 (18L-36R)	121.8 348.6 (W)
	120.05 (120°-295°)	307.8 (360°-179°)	126.4	257.8 (18C-36C)	121.9 348.6 (E)
	134.75 (296°-360°)		133.35	257.8 (1L-19R)	



SE-2, 11 JUN 2026 to 09 JUL 2026

SE-2, 11 JUN 2026 to 09 JUL 2026

ELEV 748	D	TDZE 727
----------	----------	----------



CATEGORY	A	B	C	D
S-ILS 36R	CAT II RA 119/12 100 DA 827			
S-ILS 36R	CAT IIIa RVR 06			
S-ILS 36R	CAT IIIb NA			
S-ILS 36R	CAT IIIc NA			

CATEGORY II & III ILS SPECIAL AIRCREW & AIRCRAFT CERTIFICATION REQUIRED