

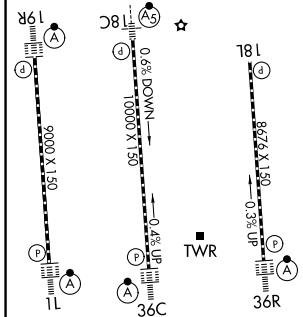
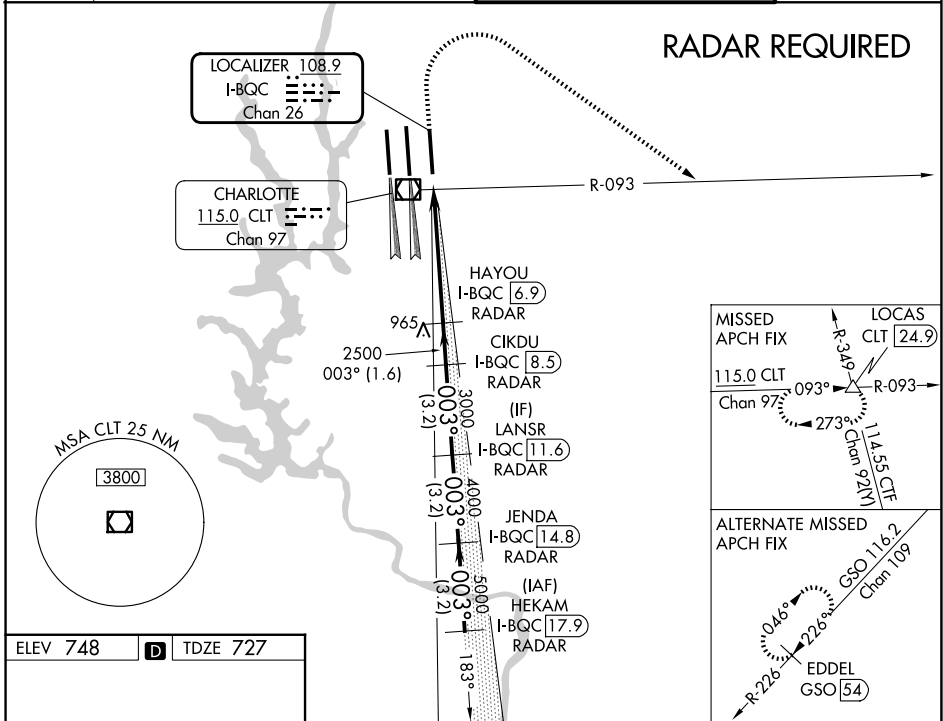
LOC/DME I-BQC <b>108.9</b> Chan 26	APP CRS <b>003°</b>	Rwy Ldg TDZE <b>727</b> Apt Elev <b>748</b>
--	------------------------	---

# ILS RWY 36R (SA CAT I)

CHARLOTTE/DOUGLAS INTL (CLT)

<p>Simultaneous approach authorized. DME or RADAR required. Requires specific OPSPEC, MSPEC or LOA approval and use of HUD to DH.</p>	<p>ALSIF-2</p>	<p>MISSED APPROACH: Climb to 1320 then climbing right turn to 4000 on CLT VOR/DME R-093 to LOCAS INT/24.9 DME and hold.</p>
---	----------------	---

D-ATIS <b>121.15</b>	CHARLOTTE APP CON		CHARLOTTE TOWER		GND CON
	<b>128.325</b> (001°-119°)	<b>257.2</b> (180°-359°)	<b>118.1</b>	<b>257.8</b> (18L-36R)	<b>121.8 348.6</b> (W)
	<b>120.05</b> (120°-295°)	<b>307.8</b> (360°-179°)	<b>126.4</b>	<b>257.8</b> (18C-36C)	<b>121.9 348.6</b> (E)
	<b>134.75</b> (296°-360°)		<b>133.35</b>	<b>257.8</b> (1L-19R)	



CATEGORY	A	B	C	D
S-ILS 36R	RA 173/14 150 DA 877			

**SA CATEGORY I ILS SPECIAL AIRCREW & AIRCRAFT CERTIFICATION REQUIRED**

SE-2, 11 JUN 2026 to 09 JUL 2026

SE-2, 11 JUN 2026 to 09 JUL 2026