

LOC/DME I-VKQ 110.35 Chan 40(Y)	APP CRS 183°	Rwy Ldg 8676 TDZE 748 Apt Elev 748
--	------------------------	--

ILS or LOC RWY 18L

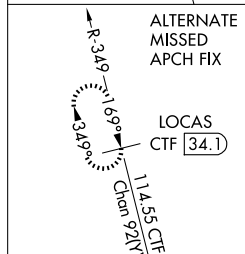
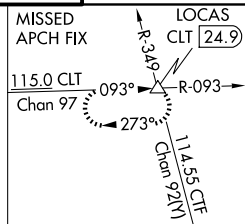
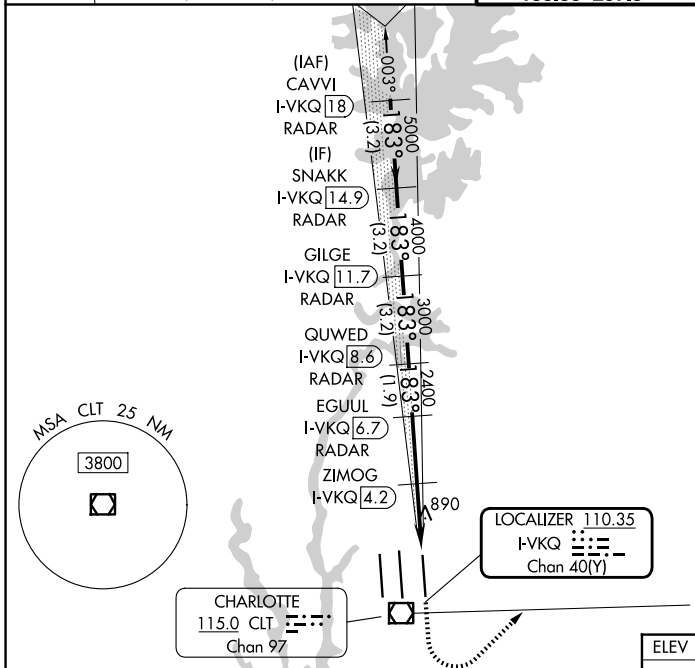
CHARLOTTE/DOUGLAS INTL (CLT)

RADAR required for procedure entry. DME or RADAR required.

MISSED APPROACH: Climb to 1300 then climbing left turn to 4000 on CLT VOR/DME R-093 to LOCAS INT/CLT 24.9 DME and hold.

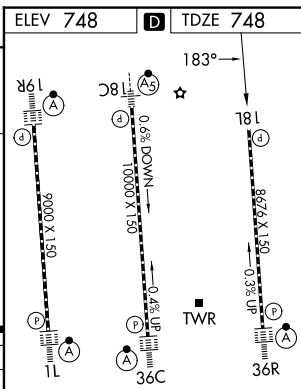
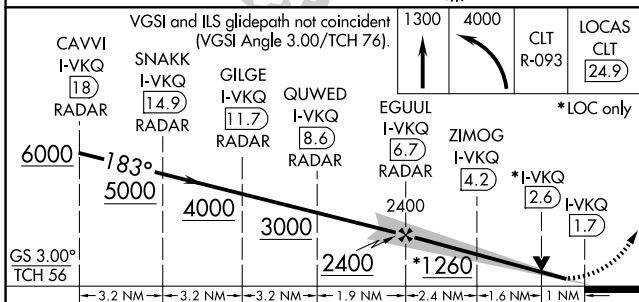
Simultaneous approach authorized.
Rwy 18L helicopter visibility reduction below RVR 4000 NA.

D-ATIS 121.15	CHARLOTTE APP CON 128.325 (001°-119°) 120.05 (120°-295°) 134.75 (296°-360°)	CHARLOTTE TOWER 118.1 257.8 (18L-36R) 126.4 257.8 (18C-36C) 133.35 257.8 (1L-19R)	GND CON 121.8 348.6 (W) 121.9 348.6 (E)
-------------------------	---	---	---



SE-2, 11 JUN 2026 to 09 JUL 2026

SE-2, 11 JUN 2026 to 09 JUL 2026



CATEGORY	A	B	C	D
S-ILS 18L	1002/40 254 (300-¾)			
S-LOC 18L	1260/55 512 (600-1)	1260-1⅓ 512 (600-1⅓)		
ZIMOG FIX MINIMUMS (DME REQUIRED)				
S-LOC 18L	1140/55 392 (400-1)	1140/60 392 (400-1¼)		

HIRL all Rwys REL Rwy 18L TDZL/RCLS Rwys 1L, 19R, 36C and 36R	FAF to MAP 5 NM				
Knots	60	90	120	150	180
Min:Sec	5:00	3:20	2:30	2:00	1:40