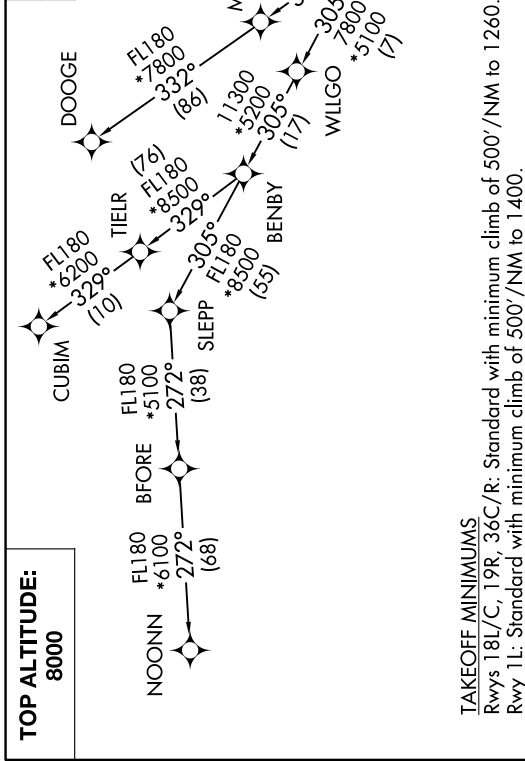


JOJJO SIX DEPARTURE (RNAV)

SE-2, 11 JUN 2026 to 09 JUL 2026

CHARLOTTE DEP CON
120.5 257.2
D-ATIS DEP
132.1
CLNC DEL
127.15 348.6
CPDIC
GND CON
121.8 348.6 (W)
121.9 348.6 (E)
CHARLOTTE TOWER
118.1 257.8 (181-36R)
126.4 257.8 (18C-36C)
133.35 257.8 (1L-19R)

RNAV 1 - DME/DME/IRU or GPS.
RADAR required.

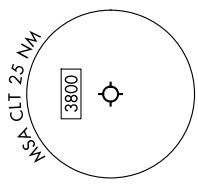


TOP ALTITUDE:
8000

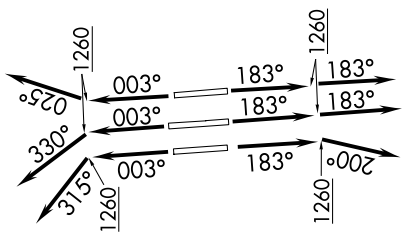
TAKEOFF MINIMUMS

Rwys 18L/C, 19R, 36C/R: Standard with minimum climb of 500'/NM to 1260.
Rwy 1L: Standard with minimum climb of 500'/NM to 1400.

- NOTE: Turbojet only.
- NOTE: If unable to accept climb rates, advise ATC on initial contact.
- NOTE: Transponder code will be issued via PDC or CLT CLNC DEL.
- NOTE: Accelerate to 250K, if unable advise ATC. Upon reaching 10000 MSL, accelerate to and maintain 280K, if unable advise ATC.



NOTE: Chart not to scale.



(CONTINUED ON FOLLOWING PAGE)

SE-2, 11 JUN 2026 to 09 JUL 2026

JOJJO SIX DEPARTURE (RNAV)

JOJJO SIX DEPARTURE (RNAV)



DEPARTURE ROUTE DESCRIPTION SEE ADDITIONAL REQUIREMENTS ON AAUP

TAKEOFF RUNWAY 1L: Climb on heading 003° to 1260, then on heading 315° or as assigned by ATC for RADAR vectors to WAYDS, thence. . .

TAKEOFF RUNWAYS 18L/C: Climb on heading 183° to 1260, then on heading 183° or as assigned by ATC for RADAR vectors to WAYDS, thence. . .

TAKEOFF RUNWAY 19R: Climb on heading 183° to 1260, then on heading 200° or as assigned by ATC for RADAR vectors to WAYDS, thence. . .

TAKEOFF RUNWAY 36C: Climb on heading 003° to 1260, then on heading 330° or as assigned by ATC for RADAR vectors to WAYDS, thence. . .

TAKEOFF RUNWAY 36R: Climb on heading 003° to 1260, then on heading 025° or as assigned by ATC for RADAR vectors to WAYDS, thence. . .

. . .on depicted route to JOJJO, then on assigned transition. Maintain 8000.
Expect filed altitude 10 minutes after departure.

CUBIM TRANSITION (JOJJO6.CUBIM)

DOOGE TRANSITION (JOJJO6.DOOGE)

NOONN TRANSITION (JOJJO6.NOONN)

SE-2, 11 JUN 2026 to 09 JUL 2026

SE-2, 11 JUN 2026 to 09 JUL 2026