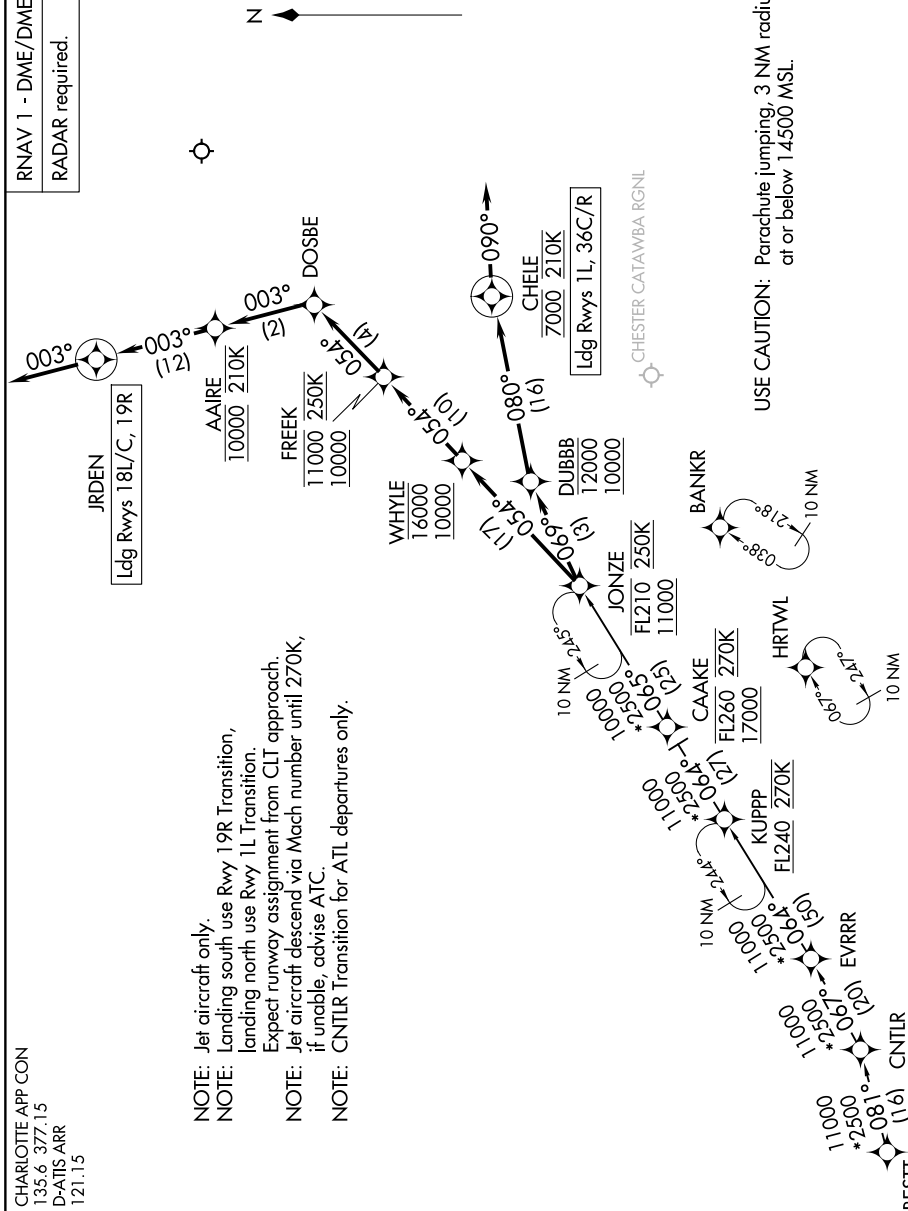


SE-2, 11 JUN 2026 to 09 JUL 2026

CHARLOTTE APP CON  
 135.6 377.15  
 D-ATIS ARR  
 121.15

RNAV 1 - DME/DME/IRU or GPS.  
 RADAR required.

- NOTE: Jet aircraft only.
- NOTE: Landing south use Rwy 19R Transition,  
 landing north use Rwy 1L Transition.  
 Expect runway assignment from CLT approach.
- NOTE: Jet aircraft descend via Mach number until 270K,  
 if unable, advise ATIS.
- NOTE: CNTLR Transition for ATL departures only.



CHESTER CATAWBA RGHL

USE CAUTION: Parachute jumping, 3 NM radius DCM  
 at or below 14500 MSL.

(CONTINUED ON FOLLOWING PAGE)

NOTE: Chart not to scale.

SE-2, 11 JUN 2026 to 09 JUL 2026

ARRIVAL ROUTE DESCRIPTION

BESTT TRANSITION (BESTT.JONZE6)  
CNTRLR TRANSITION (CNTRLR.JONZE6)

LANDING RUNWAYS 1L, 36C/R: From JONZE on track 069° to cross DUBBB between 10000 and 12000, then on track 080° to cross CHELE at 7000 and at 210K, then on track 090°. Expect RADAR vectors to final approach course.

LANDING RUNWAYS 18L/C, 19R: From JONZE on track 054° to cross WHYLE between 10000 and 16000, then on track 054° to cross FREEK between 10000 and 11000 and at 250K, then on track 054° to DOSBE, then on track 003° to cross AAIRE at 10000 and at 210K, then on track 003° to JRDEN, then on track 003°. Expect RADAR vectors to final approach course.

SE-2, 11 JUN 2026 to 09 JUL 2026

SE-2, 11 JUN 2026 to 09 JUL 2026