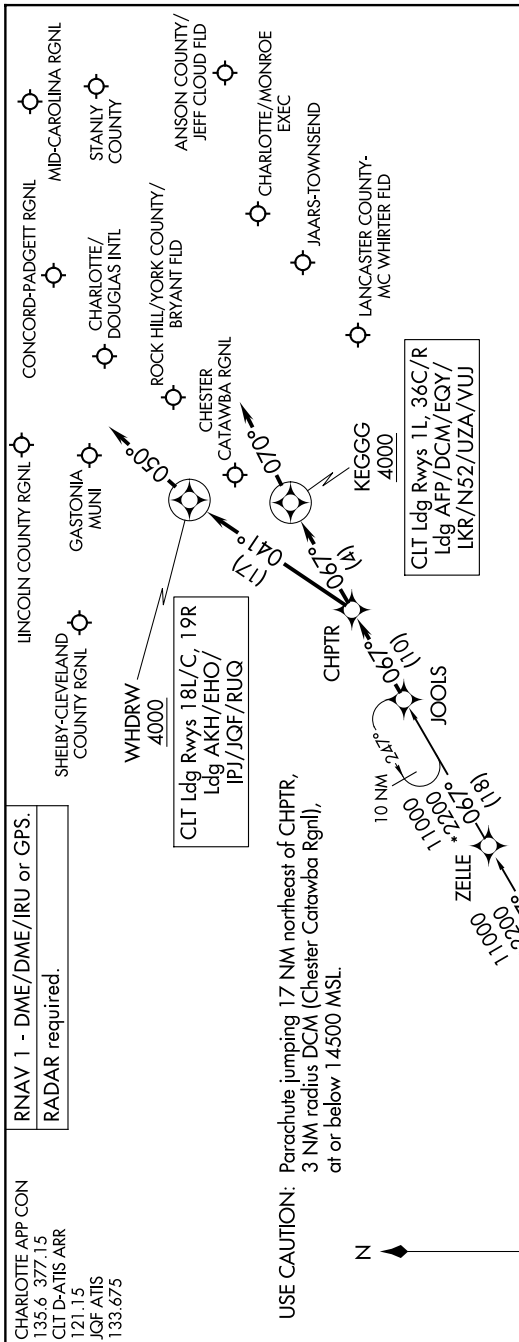


JOOLS TWO ARRIVAL (RNAV)

SE-2, 11 JUN 2026 to 09 JUL 2026



ARRIVAL ROUTE DESCRIPTION

THRSR TRANSITION (THRSR.JOOLS2)
WANSA TRANSITION (WANSA.JOOLS2)

CLT: From JOOLS on track 067° to CHPTR. **LANDING RUNWAYS 1L, 36C/R:** From CHPTR on track 067° to cross KEGGG at or above 4000, then on track 070°. Expect RADAR vectors to final approach course. **LANDING RUNWAYS 18L/C, 19R:** From CHPTR on track 041° to cross WDRW at or above 4000, then on track 050°. Expect RADAR vectors to final approach course. **LANDING DCM/EQY/UZA/AFP/N52/VUJ/IKR:** From JOOLS on track 067° to CHPTR, then on track 067° to cross KEGGG at or above 4000, then on track 070°. Expect RADAR vectors to final approach course. **LANDING AKH/RUG/EHO/JQF/IPJ:** From JOOLS on track 067° to CHPTR, then on track 041° to cross WDRW at or above 4000, then on track 050°. Expect RADAR vectors to final approach course.

SE-2, 11 JUN 2026 to 09 JUL 2026

JOOLS TWO ARRIVAL (RNAV)

NOTE: Chart not to scale.