

KERMIT FIVE DEPARTURE

D-ATIS DEP
132.1
CLNC DEL
127.15 348.6
CPDLC
GND CON
121.8 348.6 (W)
121.9 348.6 (E)
CHARLOTTE TOWER
118.1 257.8 (18L-36R)
126.4 257.8 (18C-36C)
133.35 257.8 (1L-19R)

RADAR and DME required.

**TOP ALTITUDE:
8000**

TAKEOFF MINIMUMS

Rwys 1L, 18L/C, 19R, 36C/R: Standard.

**NORTHWEST
CHARLOTTE DEP CON**
120.5 257.2

BARRETT'S MOUNTAIN
113.75 BZM
Chan 84(Y)

LIBERTY
113.0 LIB
Chan 77

SUGARLOAF MOUNTAIN
112.2 SUG
Chan 59

RALEIGH/DURHAM
117.2 RDU
Chan 119

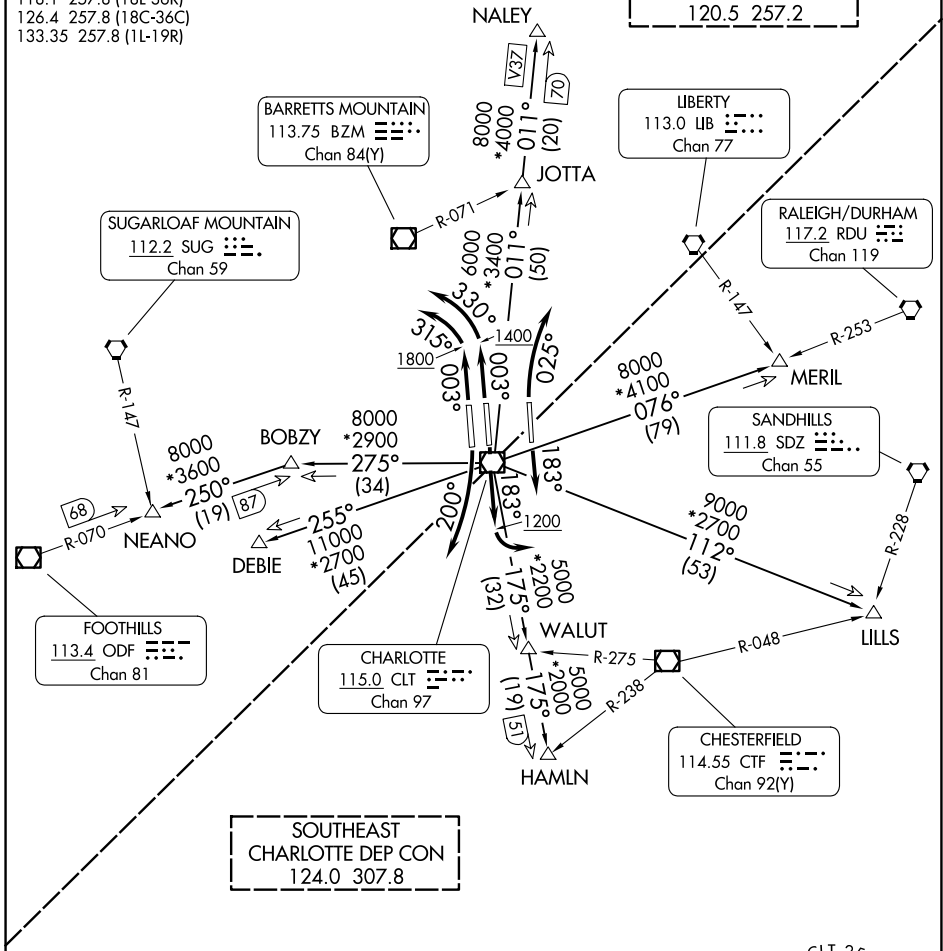
SANDHILLS
111.8 SDZ
Chan 55

FOOTHILLS
113.4 ODF
Chan 81

CHARLOTTE
115.0 CLT
Chan 97

CHESTERFIELD
114.55 CTF
Chan 92(Y)

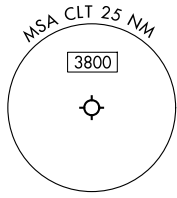
**SOUTHEAST
CHARLOTTE DEP CON**
124.0 307.8



SE-2, 11 JUN 2026 to 09 JUL 2026

SE-2, 11 JUN 2026 to 09 JUL 2026

- NOTE: Turbojets only requesting at or above 11000.
- NOTE: Accelerate to 250K, if unable advise ATC. Upon reaching 10000 MSL, accelerate to and maintain 280K, if unable advise ATC.
- NOTE: Transponder code will be issued via PDC or Charlotte clearance delivery.



NOTE: Chart not to scale.

(CONTINUED ON FOLLOWING PAGE)

KERMIT FIVE DEPARTURE

KERMIT FIVE DEPARTURE



DEPARTURE ROUTE DESCRIPTION

TAKEOFF RUNWAY 1L: Climb on heading 003° to 1800 then left turn heading 315°, thence. . .

TAKEOFF RUNWAY 18L: Climb on heading 183°, thence. . .

TAKEOFF RUNWAY 18C: Climb on heading 183° to 1200 before turning left, thence. . .

TAKEOFF RUNWAY 19R: Climbing right turn heading 200°, thence. . .

TAKEOFF RUNWAY 36C: Climb on heading 003° to 1400 then left turn heading 330°, thence. . .

TAKEOFF RUNWAY 36R: Climbing right turn heading 025°, thence. . .

. . .on RADAR vectors to intercept filed/assigned transition or enroute fix/navaid.
Maintain 8000, expect filed altitude 10 minutes after departure.

DEBIE TRANSITION (KER5.DEBIE): From over CLT VOR/DME on CLT R-255 to DEBIE.

HAMLN TRANSITION (KER5.HAMLN): From over CLT VOR/DME on CLT R-175 to HAMLN.

JOTTA TRANSITION (KER5.JOTTA): From over CLT VOR/DME on CLT R-011 to JOTTA.

LILLS TRANSITION (KER5.LILLS): From over CLT VOR/DME on CLT R-112 to LILLS.

MERIL TRANSITION (KER5.MERIL): From over CLT VOR/DME on CLT R-076 to MERIL.

NALEY TRANSITION (KER5.NALEY): From over CLT VOR/DME on CLT R-011 to NALEY.

NEANO TRANSITION (KER5.NEANO): From over CLT VOR/DME on CLT R-275 to BOBZY, then on ODF R-070 to NEANO.

SE-2, 11 JUN 2026 to 09 JUL 2026

SE-2, 11 JUN 2026 to 09 JUL 2026