

KNIGHTS FOUR DEPARTURE

D-ATIS DEP
132.1
CLNC DEL
127.15 348.6
CPDLC
GND CON
121.8 348.6 (W)
121.9 348.6 (E)
CHARLOTTE TOWER
118.1 257.8 (18L-36R)
126.4 257.8 (18C-36C)
133.35 257.8 (1L-19R)

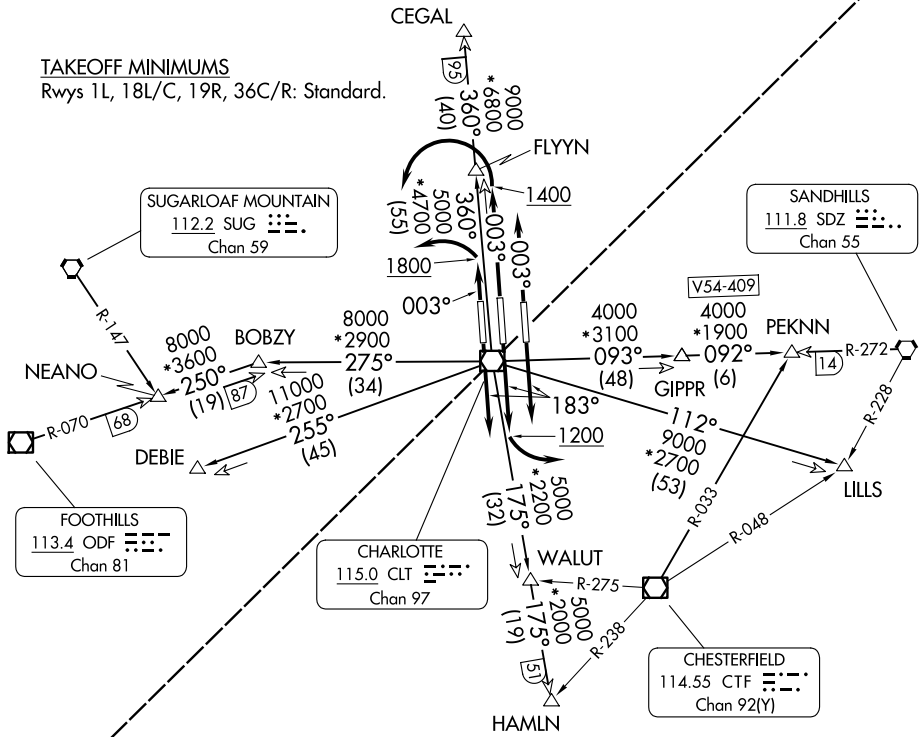
RADAR and DME required.

**TOP ALTITUDE:
4000**

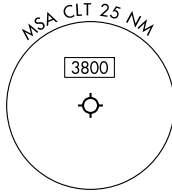
NORTHWEST CHARLOTTE DEP CON
120.05 257.2 (DEBIE, NEANO Transitions)
120.05 257.2 (FLYYN, CEGAL Transitions, 18L/C, 19R)
120.5 257.2 (FLYYN, CEGAL Transitions, 1L, 36C/R)

TAKEOFF MINIMUMS

Rwys 1L, 18L/C, 19R, 36C/R: Standard.



SOUTHEAST CHARLOTTE DEP CON
128.325 307.8 (PEKNN, LILLS, HAMLN, ANDYS Transitions)



NOTE: Props only.
NOTE: Turboprops: Operate in a manner that will result in best forward speed and climb rate.
NOTE: Transponder code will be issued via PDC or Charlotte clearance delivery.

(CONTINUED ON FOLLOWING PAGE)

NOTE: Chart not to scale.

SE-2, 11 JUN 2026 to 09 JUL 2026

SE-2, 11 JUN 2026 to 09 JUL 2026

KNIGHTS FOUR DEPARTURE



DEPARTURE ROUTE DESCRIPTION

TAKEOFF RUNWAY 1L: Climb on heading 003° to 1800 before turning left, thence. . .

TAKEOFF RUNWAYS 18L, 19R: Climb on heading 183° or as assigned by ATC, thence. . .

TAKEOFF RUNWAY 18C: Climb on heading 183° to 1200 before turning left, thence. . .

TAKEOFF RUNWAY 36C: Climb on heading 003° to 1400 before turning left, thence. . .

TAKEOFF RUNWAY 36R: Climb on heading 003° or as assigned by ATC, thence. . .

. . .on RADAR vectors to intercept filed/assigned transition or enroute fix/navaid.

Maintain 4000, expect filed altitude/flight level 10 minutes after departure.

CEGAL TRANSITION (KNI4.CEGAL): From over CLT VOR/DME on CLT R-360 to CEGAL.

DEBIE TRANSITION (KNI4.DEBIE): From over CLT VOR/DME on CLT R-255 to DEBIE.

FLYYN TRANSITION (KNI4.FLYYN): From over CLT VOR/DME on CLT R-360 to FLYYN.

HAMLN TRANSITION (KNI4.HAMLN): From over CLT VOR/DME on CLT R-175 to HAMLN.

LILLS TRANSITION (KNI4.LILLS): From over CLT VOR/DME on CLT R-112 to LILLS.

NEANO TRANSITION (KNI4.NEANO): From over CLT VOR/DME on CLT R-275 to BOBZY,
then on ODF R-070 to NEANO.

PEKNN TRANSITION (KNI4.PEKNN): From over CLT VOR/DME on CLT R-093 to GIPPR,
then on SDZ R-272 to PEKNN.

SE-2, 11 JUN 2026 to 09 JUL 2026

SE-2, 11 JUN 2026 to 09 JUL 2026