

MILLET FOUR ARRIVAL (RNAV)

9200 JUN 60 '2-2, 11 JUN 2026 to 09 JUL 2026

CHARLOTTE APP CON
126.15 282.325
D-ATIS ARR
121.115

RNAV 1 - DME/DME/IRU or GPS.
RADAR required.

NOTE: Jet aircraft only.
NOTE: CLT approach will assign landing runway.

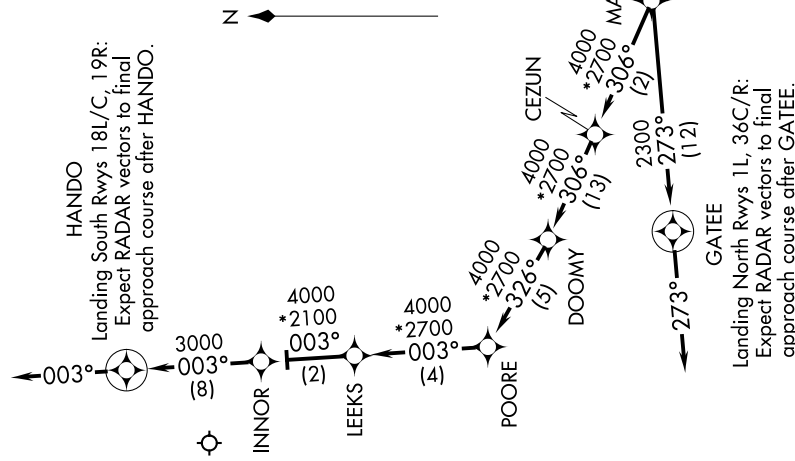
ARRIVAL ROUTE DESCRIPTION

OKNEE TRANSITION (OKNEE.MLLET4)
TORQD TRANSITION (TORQD.MLLET4)

From RYFILE on track 308° to YELLS, then on track 308° to MILLET, then on track 306° to MANGY.

LANDING RUNWAYS 1L, 36C/R: From MANGY on track 273° to GATEE, then on track 273°. Expect RADAR vectors to final approach course.

LANDING RUNWAYS 18L/C, 19R: From MANGY on track 306° to CEZUN, then on track 306° to DOOMY, then on track 326° to POORE, then on track 003° to LEEKS, then on track 003° to INNOR, then on track 003° to HANDO, then on track 003°. Expect RADAR vectors to final approach course.



Landing South: Expect 14000 250K
Landing North: Expect 12000 250K

Landing North Rwy 1L, 36C/R:
Expect RADAR vectors to final approach course after GATEE.

Landing South Rwy 18L/C, 19R:
Expect RADAR vectors to final approach course after HANDO.

NOTE: Chart not to scale.

MILLET FOUR ARRIVAL (RNAV)

(RYFLE.MLLET4) 14MAY26

CHARLOTTE, NORTH CAROLINA
CHARLOTTE/DOUGLAS INTL (CLT)

SE-2, 11 JUN 2026 to 09 JUL 2026