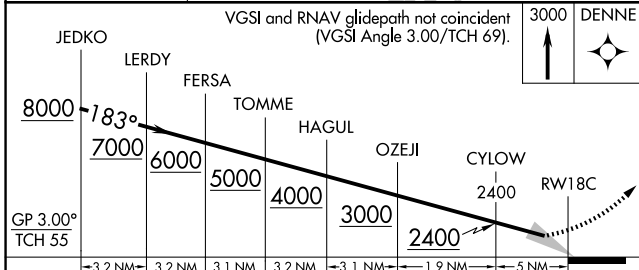
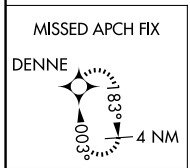
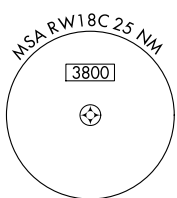
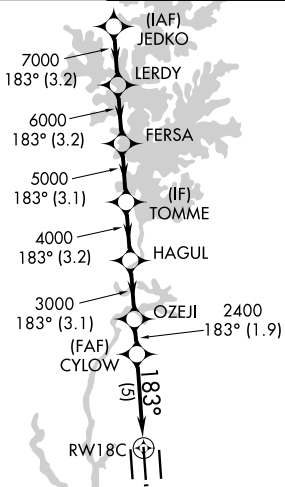


APP CRS	Rwy Ldg 10000
183°	TDZE 742
	Apt Elev 748

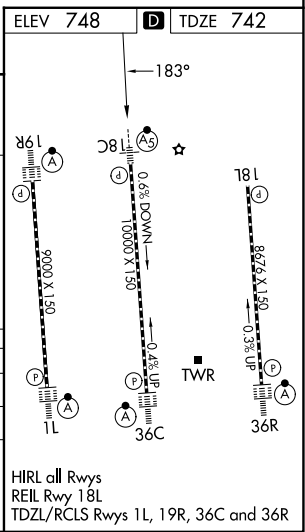
RNAV (RNP) Z RWY 18C

CHARLOTTE/DOUGLAS INTL (CLT)

RNP AR APCH.		MALSRL	MISSED APPROACH: Climb to 3000 direct DENNE and hold.		
⚠ Simultaneous approach authorized. For uncompensated Baro-VNAV systems, procedure NA below -11°C or above 54°C.					
D-ATIS	CHARLOTTE APP CON		CHARLOTTE TOWER		GND CON
121.15	128.325 (001°-119°)	257.2 (180°-359°)	118.1 257.8 (18L-36R)	126.4 257.8 (18C-36C)	121.8 348.6 (W)
	120.05 (120°-295°)	307.8 (360°-179°)	133.35 257.8 (1L-19R)		121.9 348.6 (E)
	134.75 (296°-360°)				



CATEGORY	A	B	C	D
RNP 0.11 DA		1067/26	325 (400-½)	
RNP 0.30 DA		1177/40	435 (500-¾)	



AUTHORIZATION REQUIRED

HIRL all Rwys
 REIL Rwy 18L
 TDZL/RCLS Rwys 1L, 19R, 36C and 36R

SE-2, 11 JUN 2026 to 09 JUL 2026

SE-2, 11 JUN 2026 to 09 JUL 2026