

APP CRS	Rwy Ldg 10000
003°	TDZE 707
	Apt Elev 748

RNAV (RNP) Z RWY 36C

CHARLOTTE/DOUGLAS INTL (CLT)

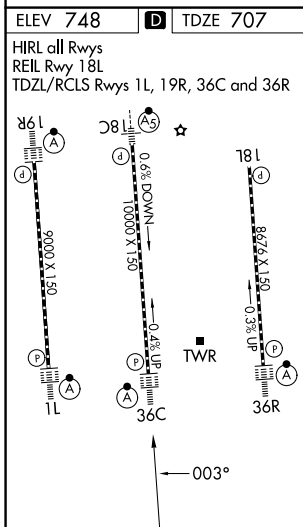
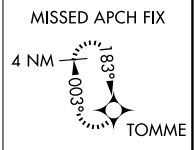
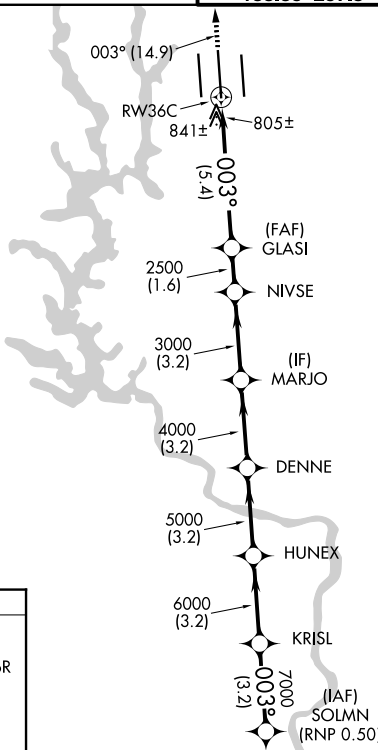
RNP AR APCH - GPS.

Simultaneous approach authorized. Use of FD or AP required during simultaneous operations. For uncompensated Baro-VNAV systems, procedure NA below -8°C or above 54°C. For inop ALS, increase RNP 0.30 visibility all Cats to 1½ SM.

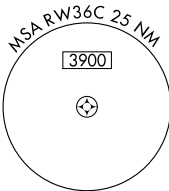


MISSED APPROACH: Climb to 3000 on track 003° to TOMME and hold.

D-ATIS	CHARLOTTE APP CON	CHARLOTTE TOWER	GND CON
121.15	128.325 (001°-119°) 120.05 (120°-295°) 134.75 (296°-360°)	118.1 257.8 (18L-36R) 126.4 257.8 (18C-36C) 133.35 257.8 (1L-19R)	121.8 348.6 (W) 121.9 348.6 (E)



3000	TOMME	VGSi and RNAV glidepath not coincident (VGSi Angle 3.00/TCH 72).					SOLMNM
↑	003°	GLASI	NIVSE	MARJO	DENNE	HUNEX	KRISL
		2500	3000	4000	5000	6000	7000
		5.4 NM	1.6 NM	3.2 NM	3.2 NM	3.2 NM	3.2 NM
RW36C		2500	3000	4000	5000	6000	7000
		5.4 NM	1.6 NM	3.2 NM	3.2 NM	3.2 NM	3.2 NM
CATEGORY	A	B		C		D	
RNP 0.11 DA	1134/40 427 (400-¾)						
RNP 0.30 DA	1180/50 473 (500-1)						



AUTHORIZATION REQUIRED

SE-2, 11 JUN 2026 to 09 JUL 2026

SE-2, 11 JUN 2026 to 09 JUL 2026