


WAAS CH <b>81800</b> <b>W18B</b>	APP CRS <b>183°</b>	Rwy Ldg <b>10000</b> TDZE <b>742</b> Apt Elev <b>748</b>
--	------------------------	--

# RNAV (GPS) Y RWY 18C

CHARLOTTE/DOUGLAS INTL (CLT)

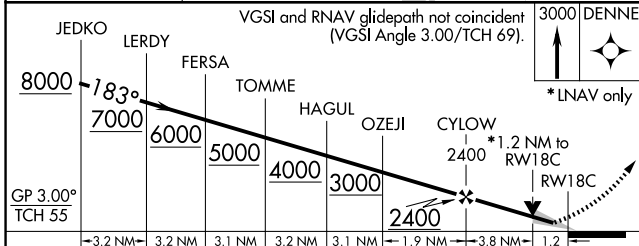
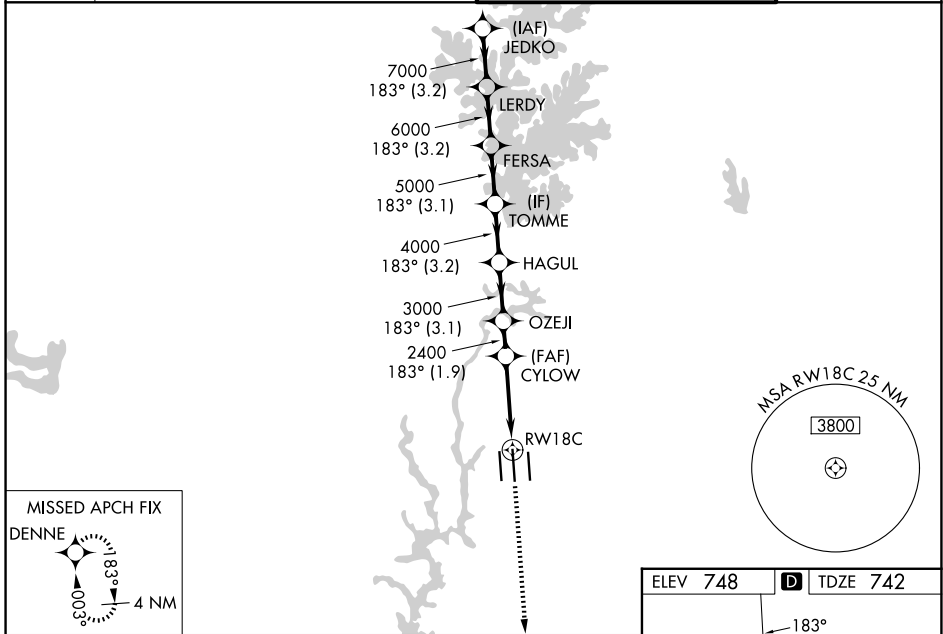
RNP APCH.

**⚠** Circling NA at night. Simultaneous approach authorized. LNAV procedure NA during simultaneous operations. Use of FD or AP required during simultaneous operations. For uncompensated Baro-VNAV systems, LNAV/VNAV NA below -11°C or above 54°C.  
**\*\* RVR 1800 authorized with use of FD or AP or HUD to DA.**

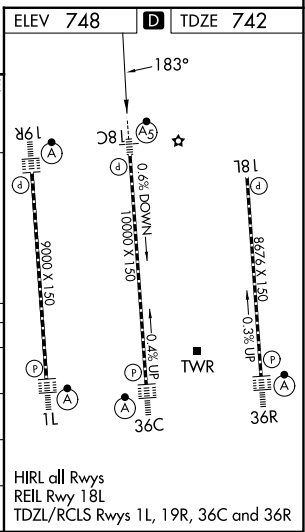
MALSR 

MISSED APPROACH: Climb to 3000 direct DENNE and hold.

D-ATIS	CHARLOTTE APP CON		CHARLOTTE TOWER		GND CON
<b>121.15</b>	<b>128.325</b> (001°-119°) <b>120.05</b> (120°-295°) <b>134.75</b> (296°-360°)	<b>257.2</b> (180°-359°) <b>307.8</b> (360°-179°)	<b>118.1</b> (18L-36R) <b>126.4</b> (18C-36C) <b>133.35</b> (1L-19R)	<b>257.8</b> (18L-36R) <b>257.8</b> (18C-36C) <b>257.8</b> (1L-19R)	<b>121.8</b> 348.6 (W) <b>121.9</b> 348.6 (E)



CATEGORY	A	B	C	D
LPV DA **	942/24		200 (200-½)	
LNAV/VNAV DA	1070/26		328 (400-½)	
LNAV MDA	1200/24	458 (500-½)	1200/45	458 (500-¾)
CIRCLING	1380-1	632 (700-1)	1500-2¼ 752 (800-2¼)	1500-2½ 752 (800-2½)



SE-2, 11 JUN 2026 to 09 JUL 2026

SE-2, 11 JUN 2026 to 09 JUL 2026