

WAAS CH 77500 W18A	APP CRS 183°	Rwy Ldg TDZE Apt Elev	8676 748 748
--	------------------------	-----------------------------	---

RNAV (GPS) Y RWY 18L

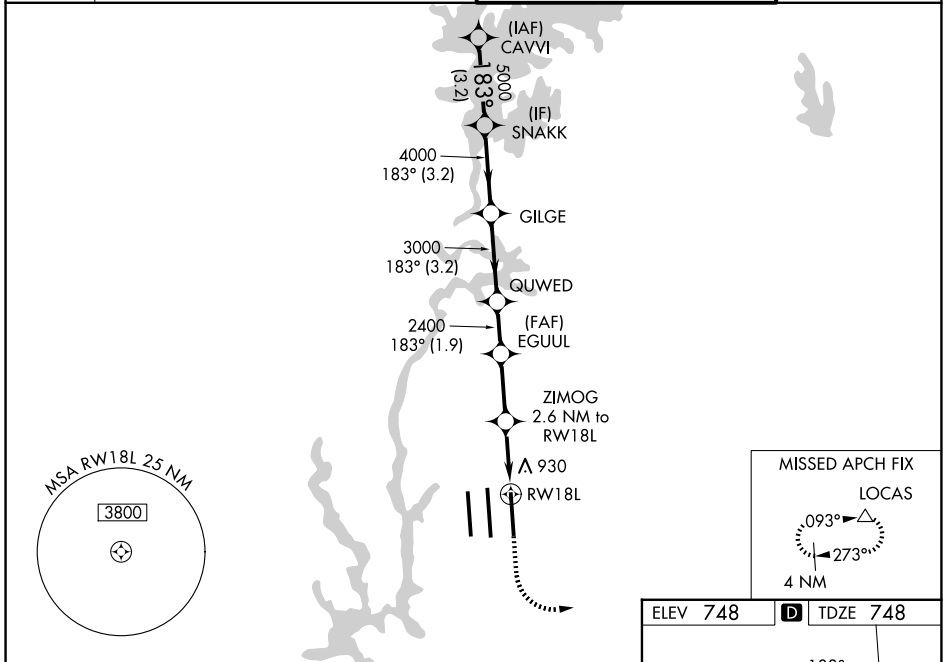
CHARLOTTE/DOUGLAS INTL (CLT)

RNP APCH.

- ▼** Circling NA at night. Simultaneous approach authorized. LNAV procedure NA during simultaneous operations. Use of FD or AP required during simultaneous operations.
- ▲** Rwy 18L helicopter visibility reduction below RVR 4000 NA. For uncompensated Baro-VNAV systems, LNAV/VNAV NA below -11°C or above 54°C.

MISSED APPROACH: Climb to 1300 then climbing left turn to 4000 direct LOCAS and hold.

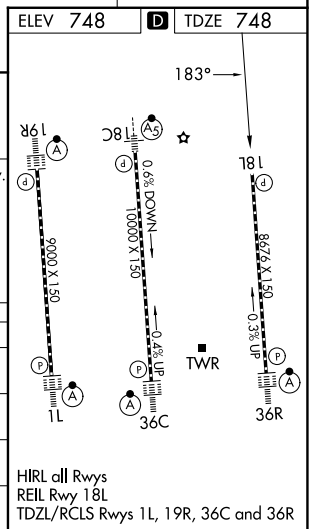
D-ATIS	CHARLOTTE APP CON		CHARLOTTE TOWER		GND CON
121.15	128.325 (001°-119°)	257.2 (180°-359°)	118.1 (18L-36R)	257.8 (18C-36C)	121.8 348.6 (W)
	120.05 (120°-295°)	307.8 (360°-179°)	126.4 (18C-36C)	257.8 (1L-19R)	121.9 348.6 (E)
	134.75 (296°-360°)		133.35 (1L-19R)		



VGSI and RNAV glidepath not coincident (VGSI Angle 3.00/TCH 76).

CAVVI	SNAKK	GILGE	QUWED	EGUUL	ZIMOG	RW18L
6000	5000	4000	3000	2400	2400	1620
GP 3.00° TCH 56						
	3.2 NM	3.2 NM	1.9 NM	2.4 NM	1.5 NM	1.1 NM
1300	4000	LOCAS				

CATEGORY	A	B	C	D
LPV DA	1002/40		254 (300-¾)	
LNAV/VNAV DA	1216-1⅜		468 (500-1⅝)	
LNAV MDA	1180/55	432 (500-1)	1180-1¼	432 (500-1¼)
CIRCLING	1380-1	632 (700-1)	1500-2¼	1500-2½
			752 (800-2¼)	752 (800-2½)



SE-2, 11 JUN 2026 to 09 JUL 2026

SE-2, 11 JUN 2026 to 09 JUL 2026