

WAAS CH 86200 W36B	APP CRS 003°	Rwy Ldg 10000 TDZE 707 Apt Elev 748
--	------------------------	--

RNAV (GPS) Y RWY 36C

CHARLOTTE/DOUGLAS INTL (CLT)

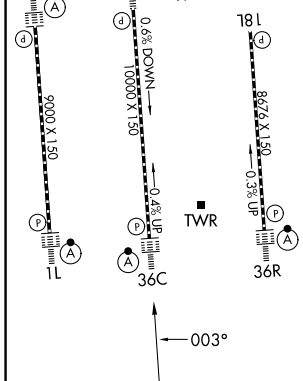
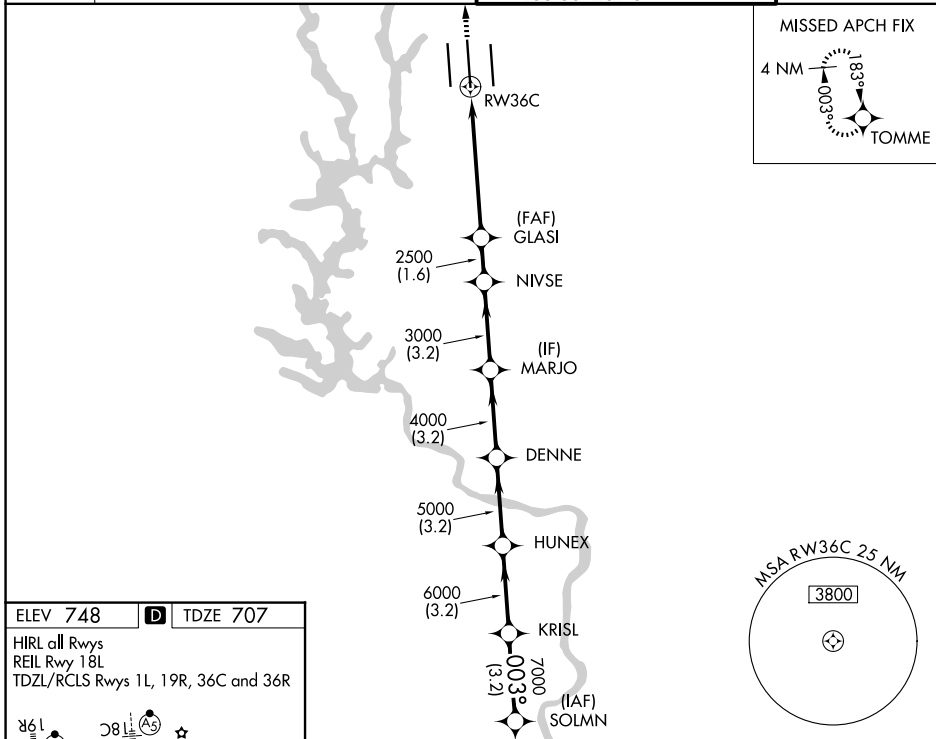
RNP APCH.

⚠ Circling NA at night. Simultaneous approach authorized. Use of FD or AP required during simultaneous operations. For uncompensated Baro-VNAV systems, LNAV/VNAV NA below -11°C or above 54°C. LNAV procedure NA during simultaneous operations.



MISSED APPROACH:
Climb to 3000 direct
TOMME and hold.

D-ATIS 121.15	CHARLOTTE APP CON 128.325 (001°-119°) 120.05 (120°-295°) 134.75 (296°-360°)	CHARLOTTE TOWER 118.1 257.8 (18L-36R) 126.4 257.8 (18C-36C) 133.35 257.8 (1L-19R)	GND CON 121.8 348.6 (W) 121.9 348.6 (E)
-------------------------	---	---	---



3000 TOMME VGSI and RNAV glidepath not coincident (VGSI Angle 3.00/TCH 72).

	GLASI	NIVSE	MARJO	DENNE	HUNEX	KRISL	SOLMN
Altitude	2500	3000	4000	5000	6000	7000	8000
Distance	1.7	3.7 NM	1.6 NM	3.2 NM	3.2 NM	3.2 NM	3.2 NM
CATEGORY	A		B		C		D
LPV DA	907/18				200 (200-1/2)		
LNAV/VNAV DA	1229-1 3/8				522 (500-1 3/8)		
LNAV MDA	1320/40	613 (600-3/4)		1320-1 3/8		613 (600-1 3/8)	
CIRCLING	1380-1	632 (700-1)		1500-2 1/4 752 (800-2 1/4)		1500-2 1/2 752 (800-2 1/2)	

*LNAV only. *1.7 NM to RWY 36C

GP 3.00° TCH 57

SE-2, 11 JUN 2026 to 09 JUL 2026

SE-2, 11 JUN 2026 to 09 JUL 2026