

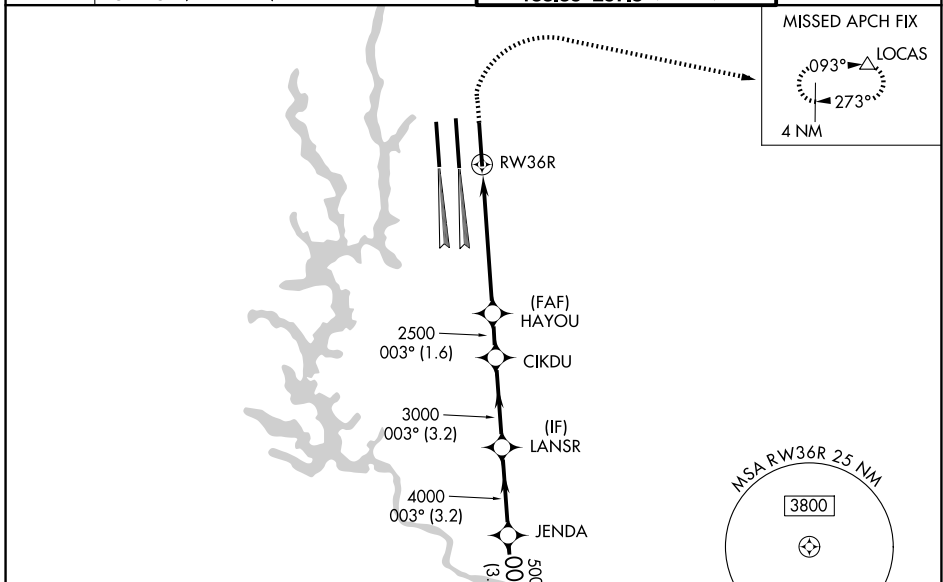
WAAS CH <b>90100</b> <b>W36D</b>	APP CRS <b>003°</b>	Rwy Ldg TDZE <b>727</b> Apt Elev <b>748</b>
--	------------------------	---

# RNAV (GPS) Y RWY 36R

CHARLOTTE/DOUGLAS INTL (CLT)

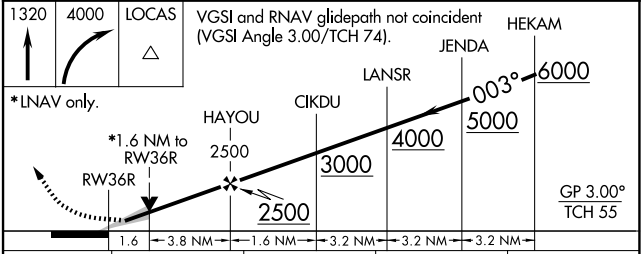
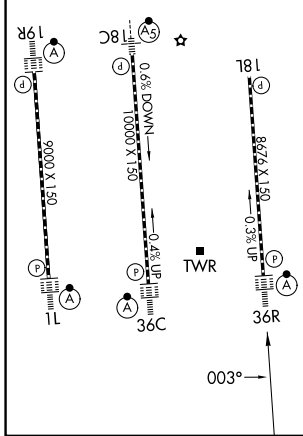
RNP APCH.	<p><b>▽</b> Circling NA at night. For uncompensated Baro-VNAV systems, LNAV/VNAV NA below -11°C or above 54°C. Simultaneous approach authorized. Use of FD or AP required during simultaneous operations. LNAV procedure NA during simultaneous operations. For inop ALSF, increase LNAV/VNAV all Cats visibility to 1/2 mile.</p>	<p>ALSF-2</p>	<p>MISSED APPROACH: Climb to 1320 then climbing right turn to 4000 direct LOCAS and hold.</p>
-----------	--	---------------	---

D-ATIS <b>121.15</b>	CHARLOTTE APP CON <b>128.325</b> (001°-119°) <b>120.05</b> (120°-295°) <b>134.75</b> (296°-360°)	<b>257.2</b> (180°-359°) <b>307.8</b> (360°-179°)	CHARLOTTE TOWER <b>118.1</b> <b>257.8</b> (18L-36R) <b>126.4</b> <b>257.8</b> (18C-36C) <b>133.35</b> <b>257.8</b> (1L-19R)	GND CON <b>121.8</b> <b>348.6</b> (W) <b>121.9</b> <b>348.6</b> (E)
-------------------------	---	--	--	---



ELEV <b>748</b>	<b>D</b>	TDZE <b>727</b>
-----------------	----------	-----------------

HIRL all Rwys  
REIL Rwy 18L  
TDZL/RCLS Rwys 1L, 19R, 36C and 36R



CATEGORY	A	B	C	D
LPV DA	927/18		200 (200-1/2)	
LNAV/VNAV DA	1229-1 1/4		502 (500-1 1/4)	
LNAV MDA	1320/24	593 (600-1/2)	1320-1 1/4	593 (600-1 1/4)
CIRCLING	1380-1	632 (700-1)	1500-2 1/4 752 (800-2 1/4)	1500-2 1/2 752 (800-2 1/2)

SE-2, 11 JUN 2026 to 09 JUL 2026

SE-2, 11 JUN 2026 to 09 JUL 2026