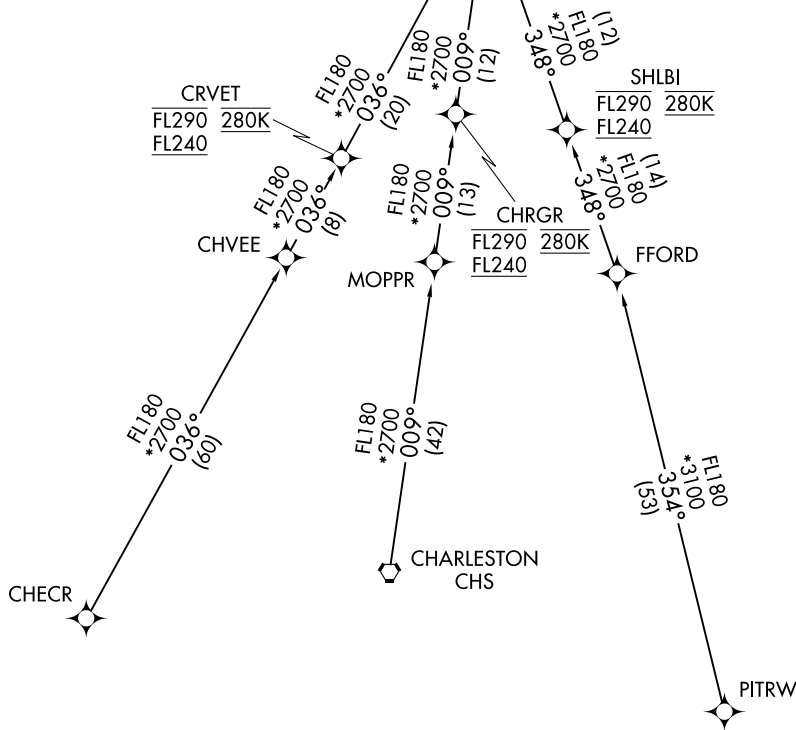
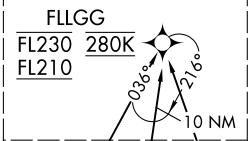


# STOCR FIVE ARRIVAL (RNAV) Transition Routes

CHARLOTTE APP CON  
126.15 282.325  
D-ATIS ARR  
121.15

See following page  
for arrival routes.

RNAV 1 - DME/DME/IRU or GPS.  
RADAR required.



- NOTE: Jet aircraft only.
- NOTE: Landing south use Rwy 18L transition, landing north use Rwy 36R transition. Expect runway assignment from CLT approach.
- NOTE: Jet aircraft descend via Mach number until 280K, if unable, advise ATC.

NOTE: Chart not to scale.

CHARLESTON TRANSITION (CHS.STOCR5)  
CHECR TRANSITION (CHECR.STOCR5)  
PITRW TRANSITION (PITRW.STOCR5)

(CONTINUED ON FOLLOWING PAGE)

SE-2, 11 JUN 2026 to 09 JUL 2026

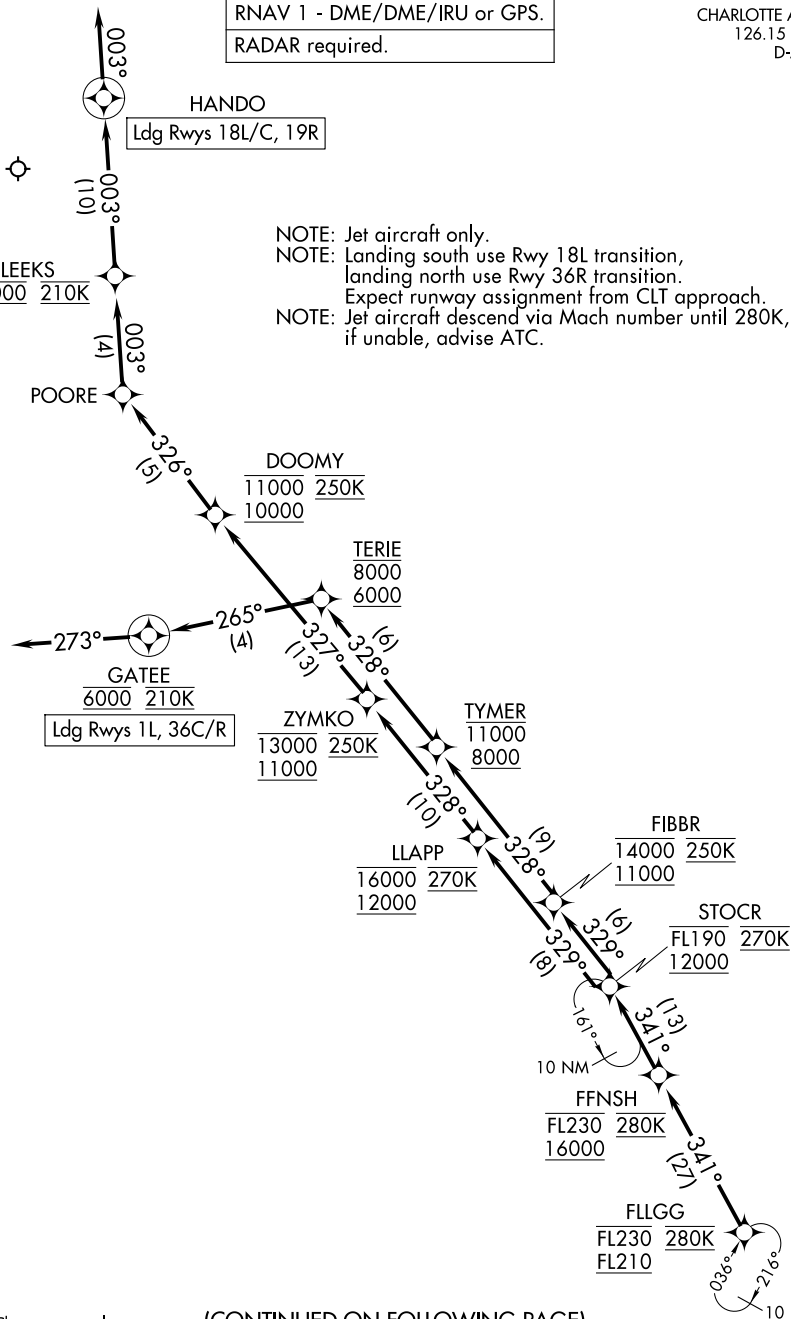
SE-2, 11 JUN 2026 to 09 JUL 2026

# STOCR FIVE ARRIVAL (RNAV) Arrival Routes

RNAV 1 - DME/DME/IRU or GPS.  
RADAR required.

CHARLOTTE APP CON  
126.15 282.325  
D-ATIS ARR  
121.15

NOTE: Jet aircraft only.  
NOTE: Landing south use Rwy 18L transition,  
landing north use Rwy 36R transition.  
Expect runway assignment from CLT approach.  
NOTE: Jet aircraft descend via Mach number until 280K,  
if unable, advise ATC.



SE-2, 11 JUN 2026 to 09 JUL 2026

SE-2, 11 JUN 2026 to 09 JUL 2026

NOTE: Chart not to scale.

(CONTINUED ON FOLLOWING PAGE)

# STOCR FIVE ARRIVAL (RNAV) Arrival Routes

# STOCR FIVE ARRIVAL (RNAV)

## ARRIVAL ROUTE DESCRIPTION

From FLLGG on track 341° to cross FFNSH between 16000 and FL230 and at 280K, then on track 341° to cross STOCR between 12000 and FL190 and at 270K.

LANDING RUNWAYS 1L, 36C/R: From STOCR on track 329° to cross FIBBR between 11000 and 14000 and at 250K, then on track 328° to cross TYMER between 8000 and 11000, then on track 328° to cross TERIE between 6000 and 8000, then on track 265° to cross GATEE at 6000 and at 210K, then on track 273°. Expect RADAR vectors to final approach course.

LANDING RUNWAYS 18L/C, 19R: From STOCR on track 329° to cross LLAPP between 12000 and 16000 and at 270K, then on track 328° to cross ZYMKO between 11000 and 13000 and at 250K, then on track 327° to cross DOOMY between 10000 and 11000 and at 250K, then on track 326° to POORE, then on track 003° to cross LEEKS at 10000 and at 210K, then on track 003° to HANDO, then on track 003°. Expect RADAR vectors to final approach course.

SE-2, 11 JUN 2026 to 09 JUL 2026

SE-2, 11 JUN 2026 to 09 JUL 2026